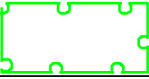
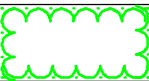
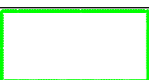
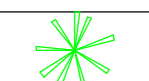







KEY

Soft Works

-  Ornamental shrub planting
-  Semi-native shrub mix
-  Groundcover planting
-  Specimen shrub
-  Tree-Select Standard
-  Proposed wildflower meadow e.g. Pictorial Meadows Woodland Edge Mix
-  Tree-Existing

Ecological enhancements

-  4 No. Schwegler bird boxes (or similar approved)
-  4 No. Schwegler bat boxes or tubes, as shown (or similar approved)

Bat and bird boxes within the trees can be spaced evenly apart, as long as they are on a tree which is sufficiently mature to have the box around 3-4m high on the main stem and not cluttered by branches and leaves.

PL02	22/05/2020	For Planning	SH	GB
PL01	17/10/19	For Planning	VM	GB
N/A	10/10/19	For Comment	VM	GB
REV:	DATE:	NOTES:	DR:	CK:



Samuel House, 5 Fox Valley Way, Stocksbridge, Sheffield, S36 2AA

CLIENT:
EDGE PS Limited

PROJECT:
Barnsley Business and Innovation Centre

DRAWING TITLE:
Soft Landscape Details

PROJECT NO.:	DRAWING NO.:
SHF.1717.001	L.D.001
DATE:	SCALE:
Oct 2019	1:200
DRAWN:	CHECKED:
VM	GB
DRAWING STATUS:	ISSUE:
For Planning	PL02

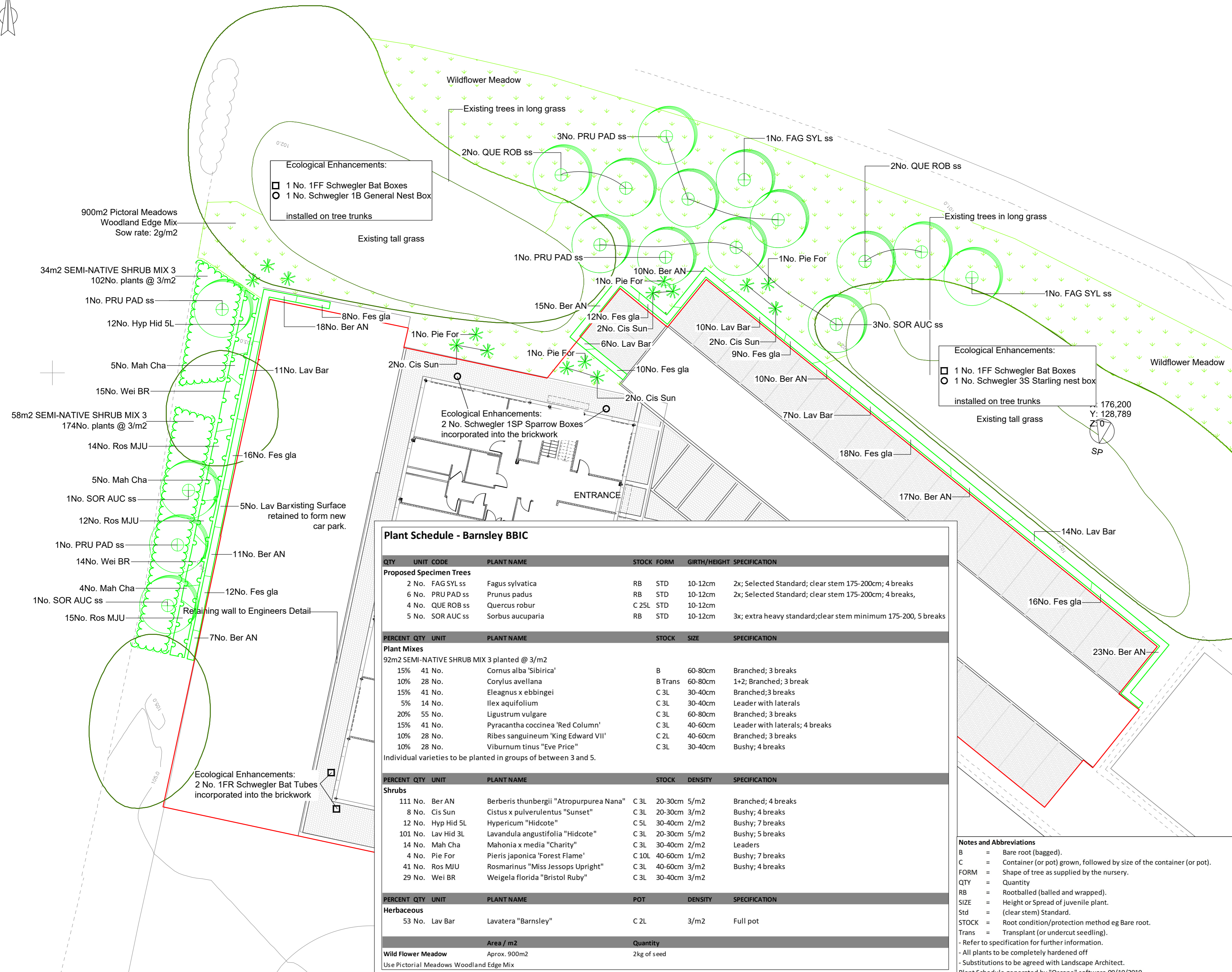
Notes and Abbreviations

B = Bare root (bagged).
 C = Container (or pot) grown, followed by size of the container (or pot).
 FORM = Shape of tree as supplied by the nursery.
 QTY = Quantity
 RB = Rootballed (balled and wrapped).
 SIZE = Height or Spread of juvenile plant.
 Std = (clear stem) Standard.
 STOCK = Root condition/protection method eg Bare root.
 Trans = Transplant (or undercut seedling).
 - Refer to specification for further information.
 - All plants to be completely hardened off
 - Substitutions to be agreed with Landscape Architect.
 Plant Schedule generated by "Qscape" software 09/10/2019

QTY	UNIT CODE	PLANT NAME	STOCK	FORM	GIRTH/HEIGHT	SPECIFICATION
Proposed Specimen Trees						
2 No.	FAG SYL ss	Fagus sylvatica	RB	STD	10-12cm	2x; Selected Standard; clear stem 175-200cm; 4 breaks
6 No.	PRU PAD ss	Prunus padus	RB	STD	10-12cm	2x; Selected Standard; clear stem 175-200cm; 4 breaks,
4 No.	QUE ROB ss	Quercus robur	C 25L	STD	10-12cm	
5 No.	SOR AUC ss	Sorbus aucuparia	RB	STD	10-12cm	3x; extra heavy standard; clear stem minimum 175-200, 5 breaks
PERCENT	QTY	UNIT	PLANT NAME	STOCK	SIZE	SPECIFICATION
Plant Mixes						
92m2 SEMI-NATIVE SHRUB MIX 3 planted @ 3/m2						
15%	41 No.		Cornus alba 'Sibirica'	B	60-80cm	Branched; 3 breaks
10%	28 No.		Corylus avellana	B Trans	60-80cm	1+2; Branched; 3 break
15%	41 No.		Eleagnus x ebbingei	C 3L	30-40cm	Branched; 3 breaks
5%	14 No.		Ilex aquifolium	C 3L	30-40cm	Leader with laterals
20%	55 No.		Ligustrum vulgare	C 3L	60-80cm	Branched; 3 breaks
15%	41 No.		Pyracantha coccinea 'Red Column'	C 3L	40-60cm	Leader with laterals; 4 breaks
10%	28 No.		Ribes sanguineum 'King Edward VII'	C 2L	40-60cm	Branched; 3 breaks
10%	28 No.		Viburnum tinus 'Eve Price'	C 3L	30-40cm	Bushy; 4 breaks
Individual varieties to be planted in groups of between 3 and 5.						
PERCENT	QTY	UNIT	PLANT NAME	STOCK	DENSITY	SPECIFICATION
Shrubs						
11 No.	Ber AN		Berberis thunbergii 'Atropurpurea Nana'	C 3L	20-30cm 5/m2	Branched; 4 breaks
8 No.	Cis Sun		Cistus x pulverulentus 'Sunset'	C 3L	20-30cm 3/m2	Bushy; 4 breaks
12 No.	Hyp Hid 5L		Hypericum 'Hidcote'	C 5L	30-40cm 2/m2	Bushy; 7 breaks
101 No.	Lav Hid 3L		Lavandula angustifolia 'Hidcote'	C 3L	20-30cm 5/m2	Bushy; 5 breaks
14 No.	Mah Cha		Mahonia x media 'Charity'	C 3L	30-40cm 2/m2	Leaders
4 No.	Pie For		Pieris japonica 'Forest Flame'	C 10L	40-60cm 1/m2	Bushy; 7 breaks
41 No.	Ros MJU		Rosmarinus 'Miss Jessops Upright'	C 3L	40-60cm 3/m2	Bushy; 4 breaks
29 No.	Wei BR		Weigela florida 'Bristol Ruby'	C 3L	30-40cm 3/m2	
PERCENT	QTY	UNIT	PLANT NAME	POT	DENSITY	SPECIFICATION
Herbaceous						
53 No.	Lav Bar		Lavatera 'Barnsley'	C 2L	3/m2	Full pot
Area / m2			Quantity			
Wild Flower Meadow			Approx. 900m2			
			2kg of seed			
Use Pictorial Meadows Woodland Edge Mix						

Plant Schedule - Barnsley BBIC

QTY	UNIT CODE	PLANT NAME	STOCK	FORM	GIRTH/HEIGHT	SPECIFICATION
Proposed Specimen Trees						
2 No.	FAG SYL ss	Fagus sylvatica	RB	STD	10-12cm	2x; Selected Standard; clear stem 175-200cm; 4 breaks
6 No.	PRU PAD ss	Prunus padus	RB	STD	10-12cm	2x; Selected Standard; clear stem 175-200cm; 4 breaks,
4 No.	QUE ROB ss	Quercus robur	C 25L	STD	10-12cm	
5 No.	SOR AUC ss	Sorbus aucuparia	RB	STD	10-12cm	3x; extra heavy standard; clear stem minimum 175-200, 5 breaks
PERCENT	QTY	UNIT	PLANT NAME	STOCK	SIZE	SPECIFICATION
Plant Mixes						
92m2 SEMI-NATIVE SHRUB MIX 3 planted @ 3/m2						
15%	41 No.		Cornus alba 'Sibirica'	B	60-80cm	Branched; 3 breaks
10%	28 No.		Corylus avellana	B Trans	60-80cm	1+2; Branched; 3 break
15%	41 No.		Eleagnus x ebbingei	C 3L	30-40cm	Branched; 3 breaks
5%	14 No.		Ilex aquifolium	C 3L	30-40cm	Leader with laterals
20%	55 No.		Ligustrum vulgare	C 3L	60-80cm	Branched; 3 breaks
15%	41 No.		Pyracantha coccinea 'Red Column'	C 3L	40-60cm	Leader with laterals; 4 breaks
10%	28 No.		Ribes sanguineum 'King Edward VII'	C 2L	40-60cm	Branched; 3 breaks
10%	28 No.		Viburnum tinus 'Eve Price'	C 3L	30-40cm	Bushy; 4 breaks
Individual varieties to be planted in groups of between 3 and 5.						
PERCENT	QTY	UNIT	PLANT NAME	STOCK	DENSITY	SPECIFICATION
Shrubs						
11 No.	Ber AN		Berberis thunbergii 'Atropurpurea Nana'	C 3L	20-30cm 5/m2	Branched; 4 breaks
8 No.	Cis Sun		Cistus x pulverulentus 'Sunset'	C 3L	20-30cm 3/m2	Bushy; 4 breaks
12 No.	Hyp Hid 5L		Hypericum 'Hidcote'	C 5L	30-40cm 2/m2	Bushy; 7 breaks
101 No.	Lav Hid 3L		Lavandula angustifolia 'Hidcote'	C 3L	20-30cm 5/m2	Bushy; 5 breaks
14 No.	Mah Cha		Mahonia x media 'Charity'	C 3L	30-40cm 2/m2	Leaders
4 No.	Pie For		Pieris japonica 'Forest Flame'	C 10L	40-60cm 1/m2	Bushy; 7 breaks
41 No.	Ros MJU		Rosmarinus 'Miss Jessops Upright'	C 3L	40-60cm 3/m2	Bushy; 4 breaks
29 No.	Wei BR		Weigela florida 'Bristol Ruby'	C 3L	30-40cm 3/m2	
PERCENT	QTY	UNIT	PLANT NAME	POT	DENSITY	SPECIFICATION
Herbaceous						
53 No.	Lav Bar		Lavatera 'Barnsley'	C 2L	3/m2	Full pot
Area / m2			Quantity			
Wild Flower Meadow			Approx. 900m2			
			2kg of seed			
Use Pictorial Meadows Woodland Edge Mix						



Ecological Enhancements:
 □ 1 No. 1FF Schwegler Bat Boxes
 ○ 1 No. Schwegler 1B General Nest Box
 installed on tree trunks

Ecological Enhancements:
 □ 1 No. 1FF Schwegler Bat Boxes
 ○ 1 No. Schwegler 3S Starling nest box
 installed on tree trunks

Ecological Enhancements:
 2 No. Schwegler 1SP Sparrow Boxes
 incorporated into the brickwork

Ecological Enhancements:
 2 No. 1FR Schwegler Bat Tubes
 incorporated into the brickwork

900m2 Pictorial Meadows
 Woodland Edge Mix
 Sow rate: 2g/m2

34m2 SEMI-NATIVE SHRUB MIX 3
 102No. plants @ 3/m2

58m2 SEMI-NATIVE SHRUB MIX 3
 174No. plants @ 3/m2

Retaining wall to Engineers Detail

Ecological Enhancements:
 2 No. 1FR Schwegler Bat Tubes
 incorporated into the brickwork

Ecological Enhancements:
 2 No. Schwegler 1SP Sparrow Boxes
 incorporated into the brickwork

Ecological Enhancements:
 2 No. Schwegler 1SP Sparrow Boxes
 incorporated into the brickwork

Ecological Enhancements:
 2 No. Schwegler 1SP Sparrow Boxes
 incorporated into the brickwork

Ecological Enhancements:
 2 No. Schwegler 1SP Sparrow Boxes
 incorporated into the brickwork

Ecological Enhancements:
 2 No. Schwegler 1SP Sparrow Boxes
 incorporated into the brickwork

Ecological Enhancements:
 2 No. Schwegler 1SP Sparrow Boxes
 incorporated into the brickwork

Ecological Enhancements:
 2 No. Schwegler 1SP Sparrow Boxes
 incorporated into the brickwork

Ecological Enhancements:
 2 No. Schwegler 1SP Sparrow Boxes
 incorporated into the brickwork

Ecological Enhancements:
 2 No. Schwegler 1SP Sparrow Boxes
 incorporated into the brickwork

Ecological Enhancements:
 2 No. Schwegler 1SP Sparrow Boxes
 incorporated into the brickwork

Ecological Enhancements:
 2 No. Schwegler 1SP Sparrow Boxes
 incorporated into the brickwork