

astley.

Delivering creative brand environments
through signage, print and digital solutions

+well Pharmacy

Client:
Well Pharmacy

Full Address:
The Roundhouse Medical Centre
Wakefield Rd
Barnsley, South Yorkshire
S71 1TH

Title:
External Signage

Date:
02.07.26

Drg by:
MR

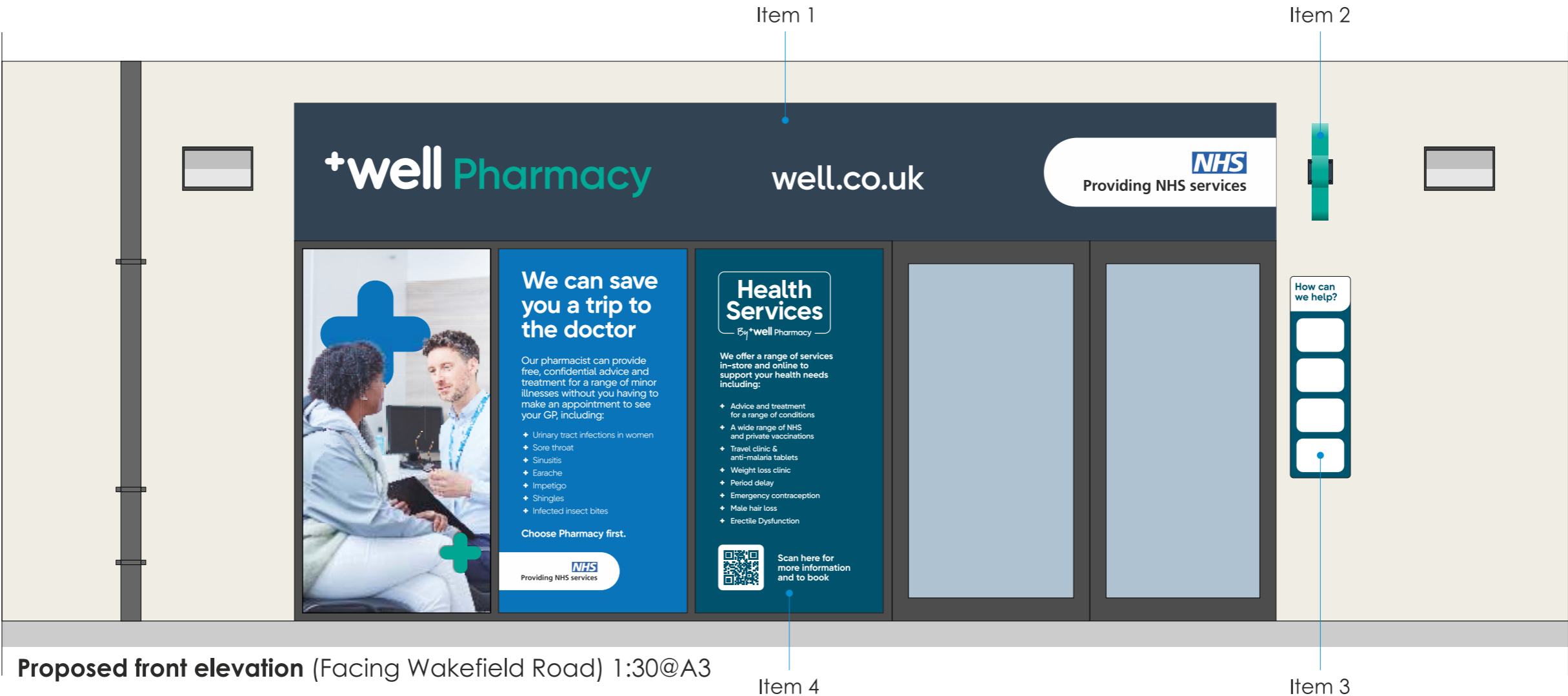
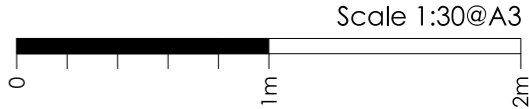
Drawing Ref:
G_93858-D

Visual Status:
APPROVED

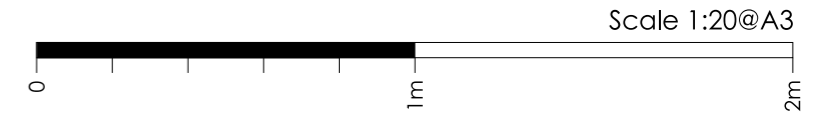
Existing views



Proposed entrance



Item 1 specification



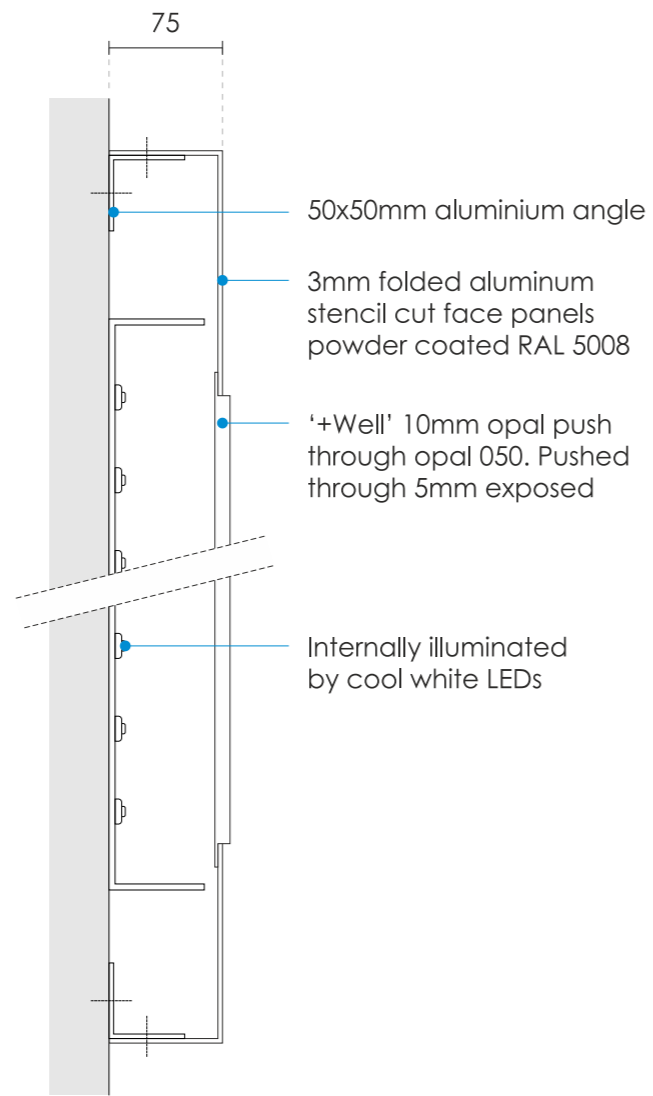
Item 1 face view 1:20@A3

Qty 1no

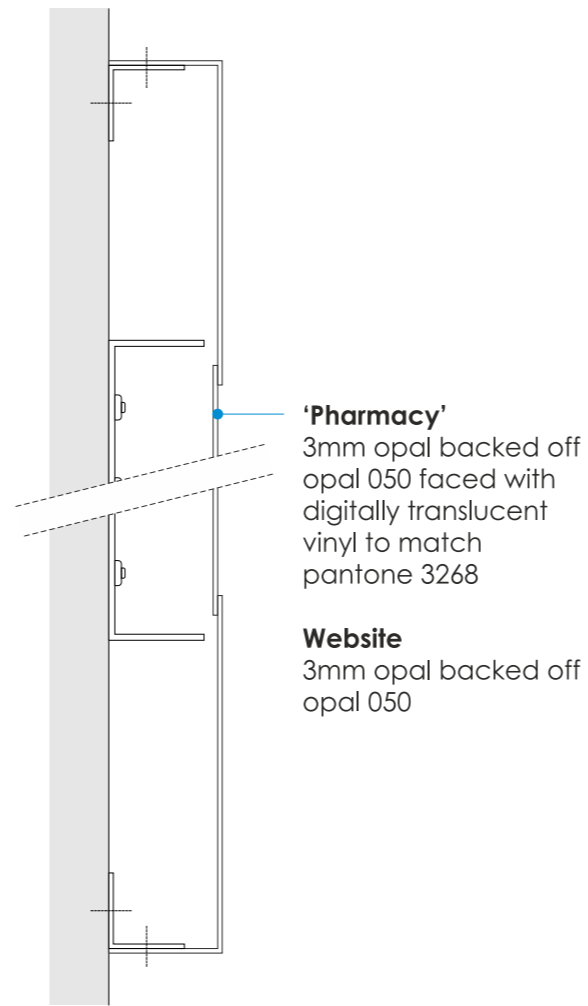
Items 1 specification

New internally illuminated fascia. See next page for specification details.

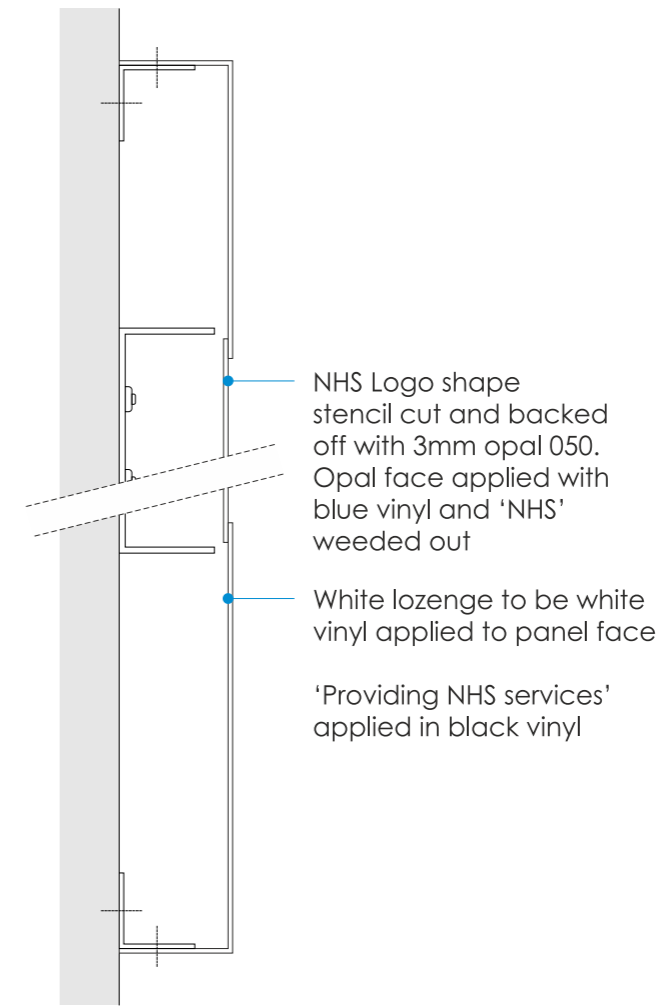
- Sign static face illumination.
- Illumination levels less than 300cd/m2
- Height FFL to bottom - 2340mm



'+well' section
1:5@A3



'Pharmacy'/website section
1:5@A3



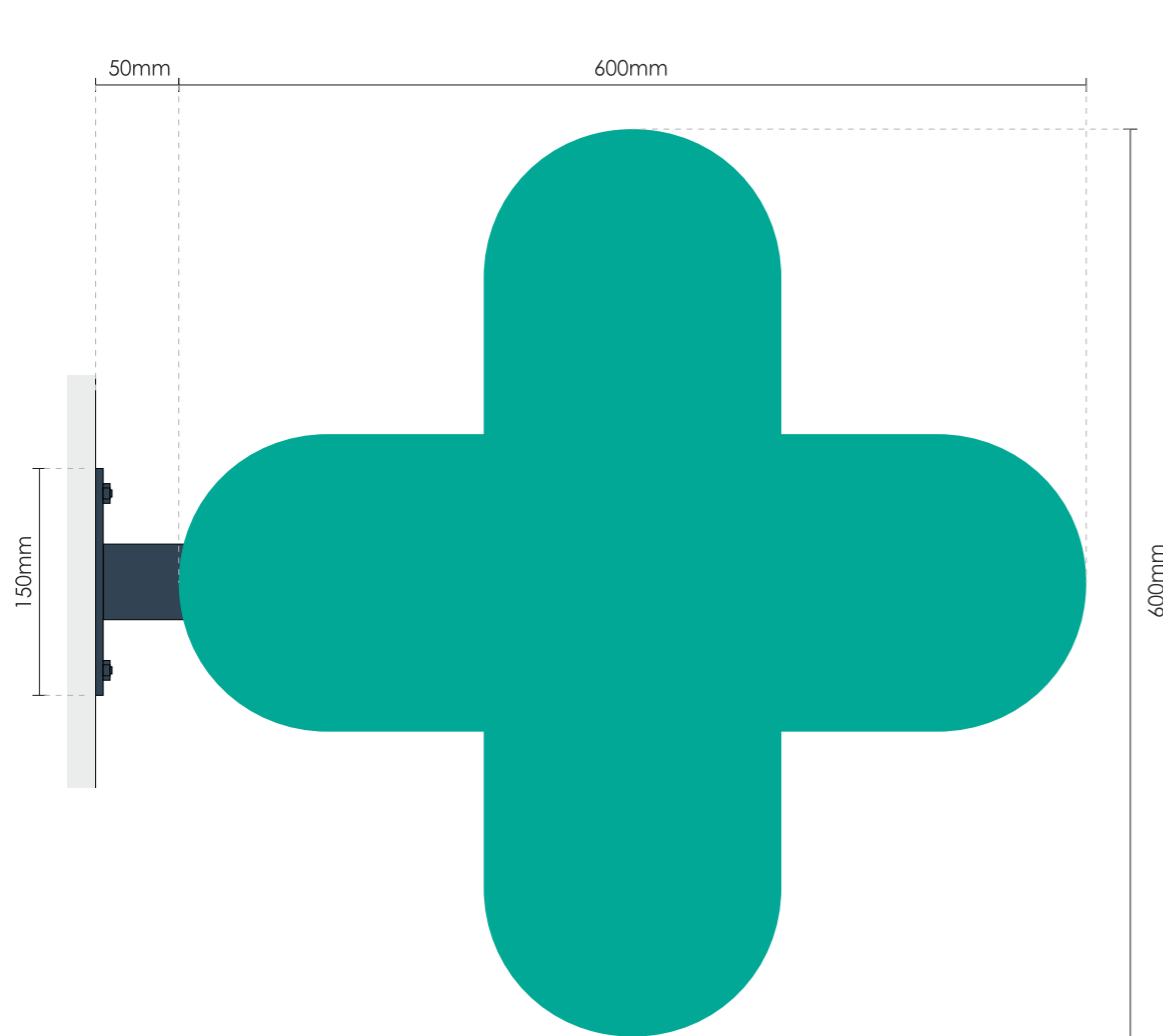
Section
1:5@A3

Item 2 specification

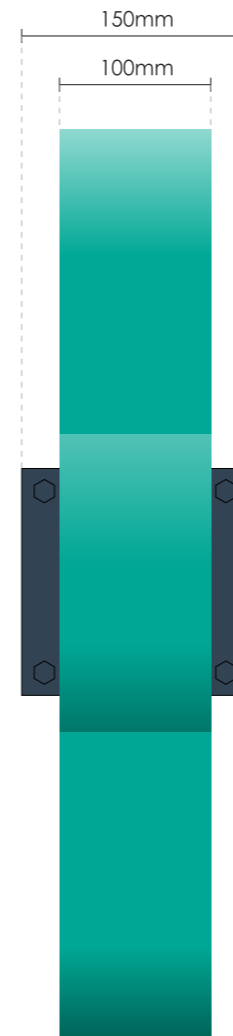
PMS 3268 C

RAL 5008

Scale 1:5@A3



Face views
Scale 1:5 @ A3



End view

Item 2 specification

Both faces to be cut from acrylic and face applied with vinyl to match PMS 3268C. Fixed to returns fabricated from aluminium and powder coated to match PMS 3268C. Internally illuminated by cool white LEDs giving face illumination.

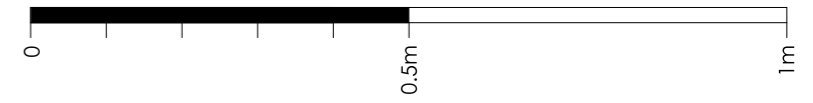
Plus to be fitted to suitable framework and fitted to existing substrate by 5mm thick fixing plate.

Sign static face illumination.
Illumination levels less than 300cd/m²
Height FFL to bottom - 2460mm

Item 3 specification

PMS 7708 C

Scale 1:10@A3



Existing



Item 3 specification

External lockable service ladder. Panels to be cut from aluminium and folded to give 25mm returns. 4no apertures cut out for clear acrylic poster holders

Non-illuminated

Height FFL to bottom - 880mm



Item 4 face view 1:20@A3

Item 4 specification

3no new digitally printed window vinyls to replace existing

Height FFFL to bottom - 100mm