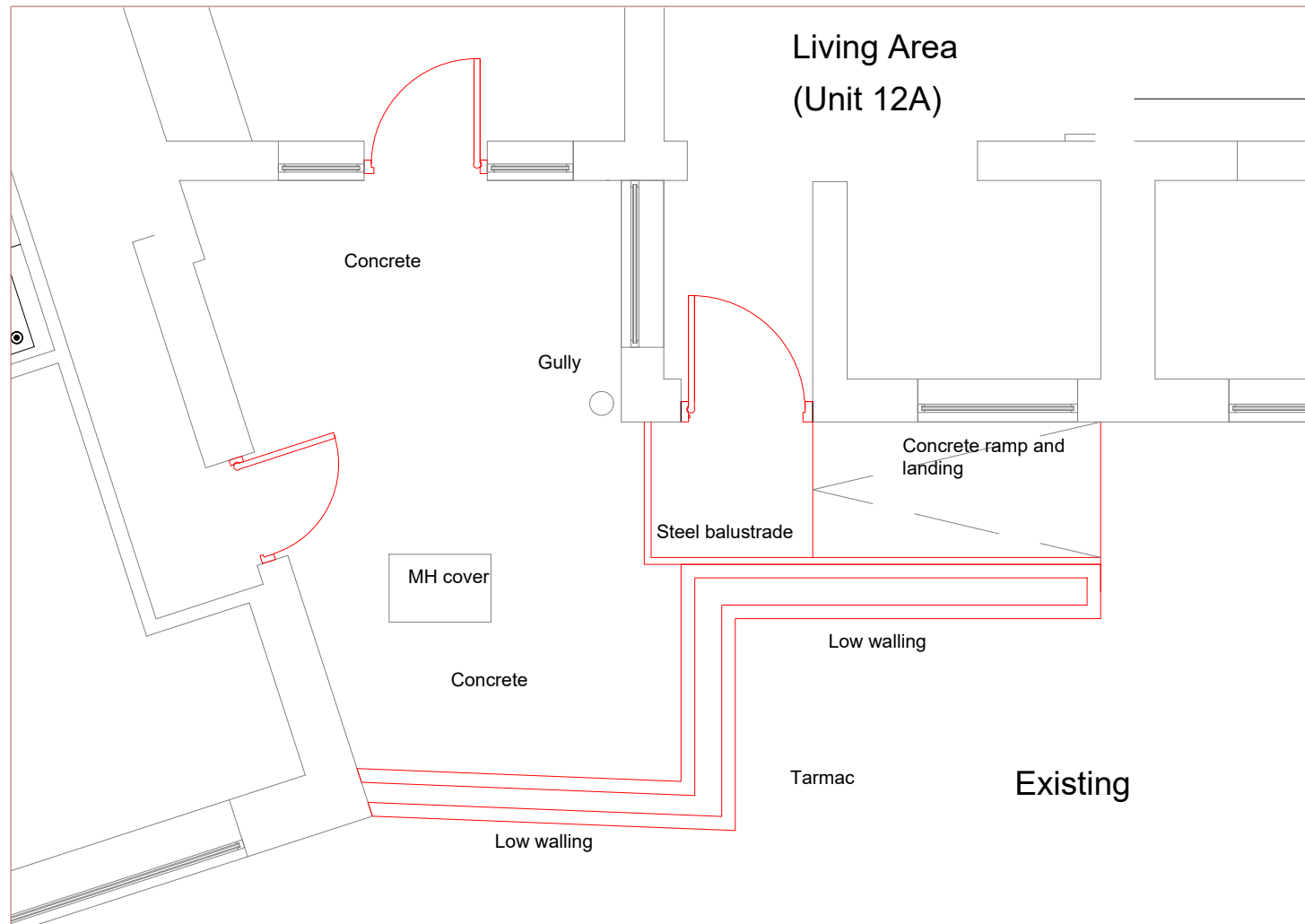
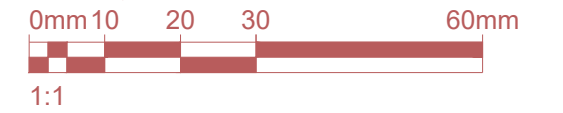


Living Area
(Unit 12A)



DO NOT SCALE FROM THIS DRAWING. ALL DIMENSIONS TO BE CHECKED ON SITE BY CONTRACTOR. REPORT ANY DISCREPANCIES TO DRAWING AUTHOR AND PROPERTY SERVICES TEAM. DRAWING OR CONTENTS SHOULD NOT BE DUPLICATED WITHOUT PRIOR CONSENT.

DRAWING TO BE READ IN CONJUNCTION WITH ALL OTHER PROJECT DOCUMENTS INCLUDING BUT NOT LIMITED TO DRAWINGS, SPECIFICATIONS, SCHEDULES



NOTES

P2	Ramp length altered to suit site levels and AD Part Table 1 gradient requirements.	13/09/21	MJY
P1	First Issue	10/09/21	MJY
Rev	Notes	Date	Issued By



SERVICE

Accommodation Strategy
BMBC

PROJECT

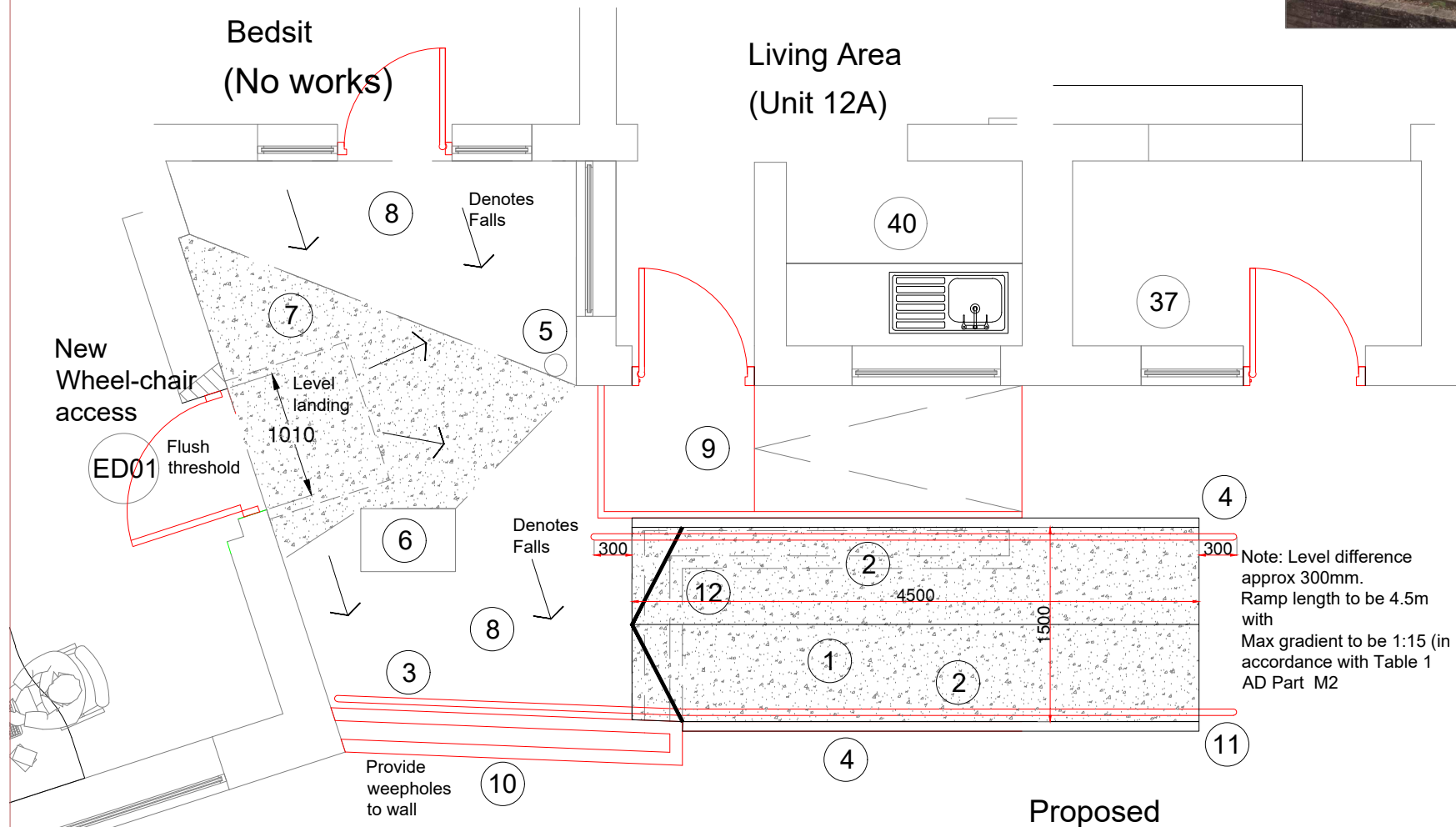
Alteration & Refurbishment of Queens House, Queens Road, Barnsley, S71 1AR

TITLE

Disabled Ramp Works

PROJECT REF Queens House	DRAWING REFERENCE BMBC-DR-A-014	REV P2
SCALE 1:500	DISCIPLINE ARCHITECTURE	SHEET SIZE A3
PURPOSE OF ISSUE PRELIMINARY		Drawn MJY Checked MJY

Living Area
(Unit 12A)



WORKS TO FORM NEW WHEELCHAIR ACCESSIBLE RAMP (TO BE IN ACCORDANCE WITH AD PART M):

- 1 New concrete slab to form ramp with brushed finish and trowel margins. Ramp to receive suitable sub-base. Ramp to be min. 1.5m width.
- 2 New galvanised steel handrail in accordance with AD Part M; Balusters to be bolted to concrete slab. Contractor to provide fabrication drawing to Architect for comment.
- 3 New galvanised steel balustrade in accordance with AD Part M; Balusters to be bolted to concrete slab. Contractor to provide fabrication drawing to Architect for comment.
- 4 New paving slab on edge with concrete haunching; Slab to form 100mm kerb upstand to ramp slope in accordance with AD Part M.
- 5 Existing gully to be retained.
- 6 Existing manhole cover to be retained.
- 7 Hatched area denotes existing concrete slab to be broken up. Form new concrete slab; Provide level landing with slight falls away from building to drain surface water. Level landing to provide flush threshold for wheelchair access.
- 8 Existing concrete slab to be retained.
- 9 Existing ramp, landing and balustrade to be retained.
- 10 Existing low twin walling to be retained and made good..
- 11 Make good to existing tarmac where new ramp formed.
- 12 Demolish existing low twin walling

Note: Level difference approx 300mm.
Ramp length to be 4.5m with Max gradient to be 1:15 (in accordance with Table 1 AD Part M2)