

Tree Constraints Plan
(Existing Layout)



Photo 1



Photo 2

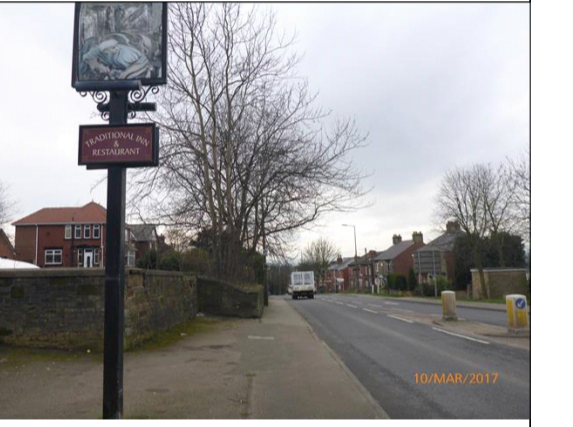


Photo 3

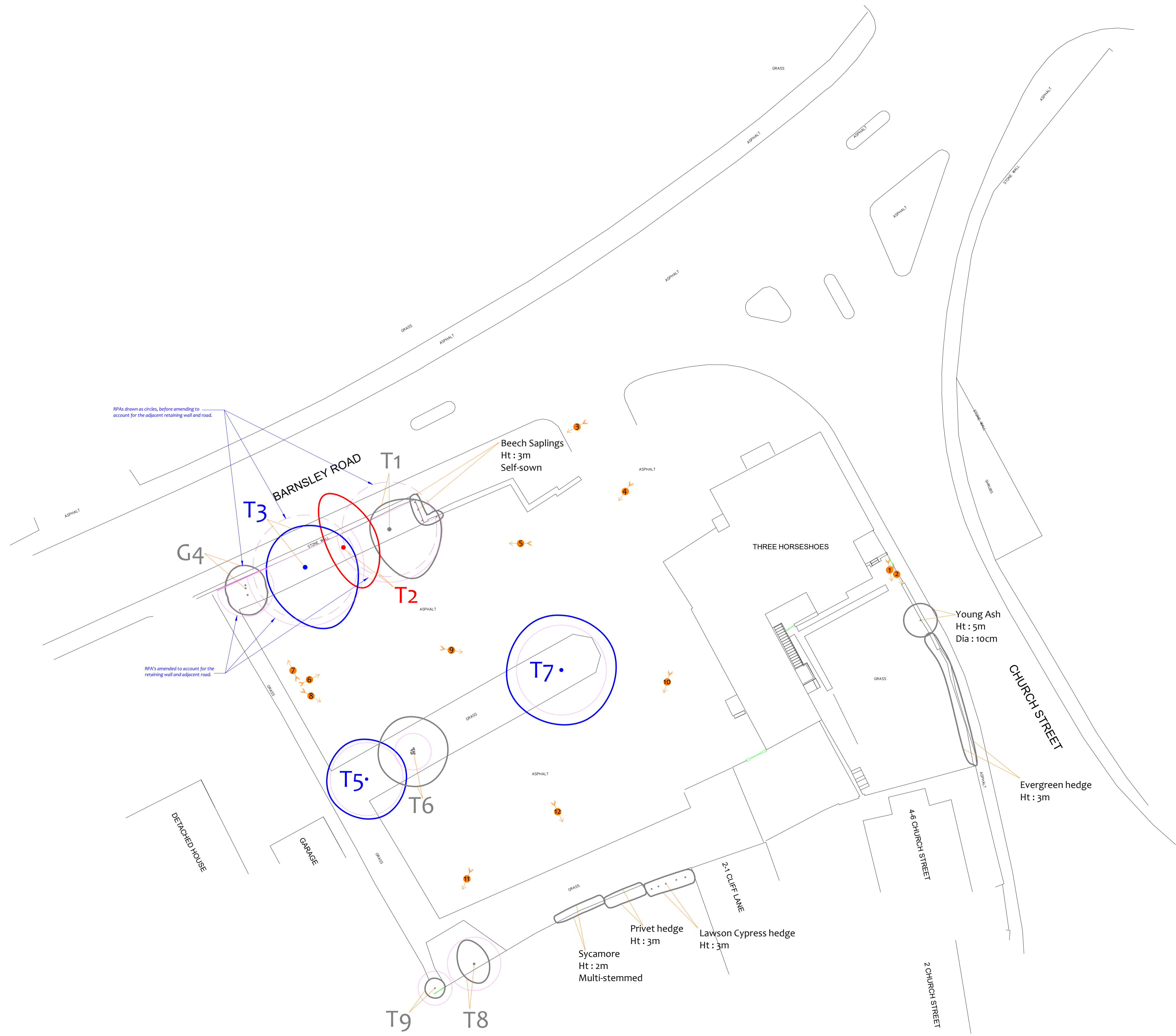


Photo 4



Photo 5

See the accompanying report for more photographs



Drawing No: CCL 09698 / TCP Rev: 1
 Title: Tree Constraints Plan (Existing Layout)
 Site: Three Horse Shoes Brierty, 572 9JT
 Scale: 1:2000 Paper Size: A1



Tree Retention Categories		Stems & canopies shown
	Category A tree	Trees of high quality with an estimated life expectancy of 40+ years. Usually large trees with significant presence or smaller trees with excellent form. Retention of these trees is highly desirable.
	Category B tree	Trees of moderate quality with a life expectancy of 20+ years. Usually maturing trees or younger trees with good form. Retention of these trees is desirable though less than Category A trees.
	Category C tree	Unremarkable trees of low quality and merit. Individual specimens are not considered to be a material planning consideration.
	Category U tree	Trees unsuitable for retention due to their very poor condition.

Tree Constraints Plan

	B5 s837 Root Protection Area (radius = 1xstem diameter)
	Root Protection Area needing amendment due to site conditions, e.g. presence of existing road or building.
	Root Protection Area having been amended to account for site conditions
T1 = Tree No 1	G2 = Group No 2 H3 = Hedge No 3



MN = Measured North:
 Canopy spreads are sometimes measured to an approximate N defined by site features. Often more accurate, especially where rows of trees are not aligned N-S or E-W.

Tree Ref.	Species	Height (m)	Root Protection Area	
			Radius (m)	Area (m ²)
T1	Grey Poplar	10	4.7	69
T2	Grey Poplar	8.5	5.0	80
T3	Grey Poplar	9	5.2	84
G4	Grey Poplar	10	1.9	12
T5	Bird Cherry	6	3.6	41
T6	Plum	6	1.8	10
T7	Cherry	6	4.4	62
T8	Holly	7	2.6	22
T9	Holly	5	1.7	9



Tree Removal Plan

(Existing Layout with Proposals Overlaid)

Proposed Layout (Pale Green)



These trees will require removal to facilitate the development.

Drawing No: CCL 09698 / TRP Rev: 1
Title: Tree Removal Plan (Existing Layout with Proposals Overlaid)
Site: Three Horse Shoes Briery, 572 9JT
Scale: 1:2000 Paper Size: A1



Tree Retention Categories		Stems & canopies shown	
	Category A tree		Trees of high quality with an estimated life expectancy of 40+ years. Usually large trees with significant presence or smaller trees with excellent form. Retention of these trees is highly desirable.
	Category B tree		Trees of moderate quality with a life expectancy of 20+ years. Usually maturing trees or younger trees with good form. Retention of these trees is desirable though less than Category A trees.
	Category C tree		Unremarkable trees of low quality and merit. Individual specimens are not considered to be a material planning consideration.
	Category U tree		Trees unsuitable for retention due to their very poor condition.

Tree Removal Plan

(Existing Layout with Proposals Overlaid)

	B5 s37 Root Protection Area (radius = 1xstem diameter)
	Root Protection Area needing amendment due to site conditions, e.g. presence of existing road or building.
	Root Protection Area having been amended to account for site conditions.
T1 = Tree No 1	G2 = Group No 2 H3 = Hedge No 3

Tree to be removed to facilitate the proposal
 Tree to be removed due to its low quality
 Proposed pruning

MN = Measured North:
Canopy spreads are sometimes measured to an approximate N defined by site features. Often more accurate, especially where rows of trees are not aligned N-S or E-W.

Tree Ref.	Species	Height (m)	Root Protection Area		
			Radius (m)	Square (m)	
T1	Grey Poplar	10	4.7	69	8.3
T2	Grey Poplar	8.5	5.0	80	8.9
T3	Grey Poplar	9	5.2	84	9.1
G4	Grey Poplar	10	1.9	12	3.4
T5	Bird Cherry	6	3.6	41	6.4
T6	Plum	6	1.8	10	3.2
T7	Cherry	6	4.4	62	7.9
T8	Holly	7	2.6	22	4.7
T9	Holly	5	1.7	9	3.0

Excerpts from the Arboricultural Method Statement

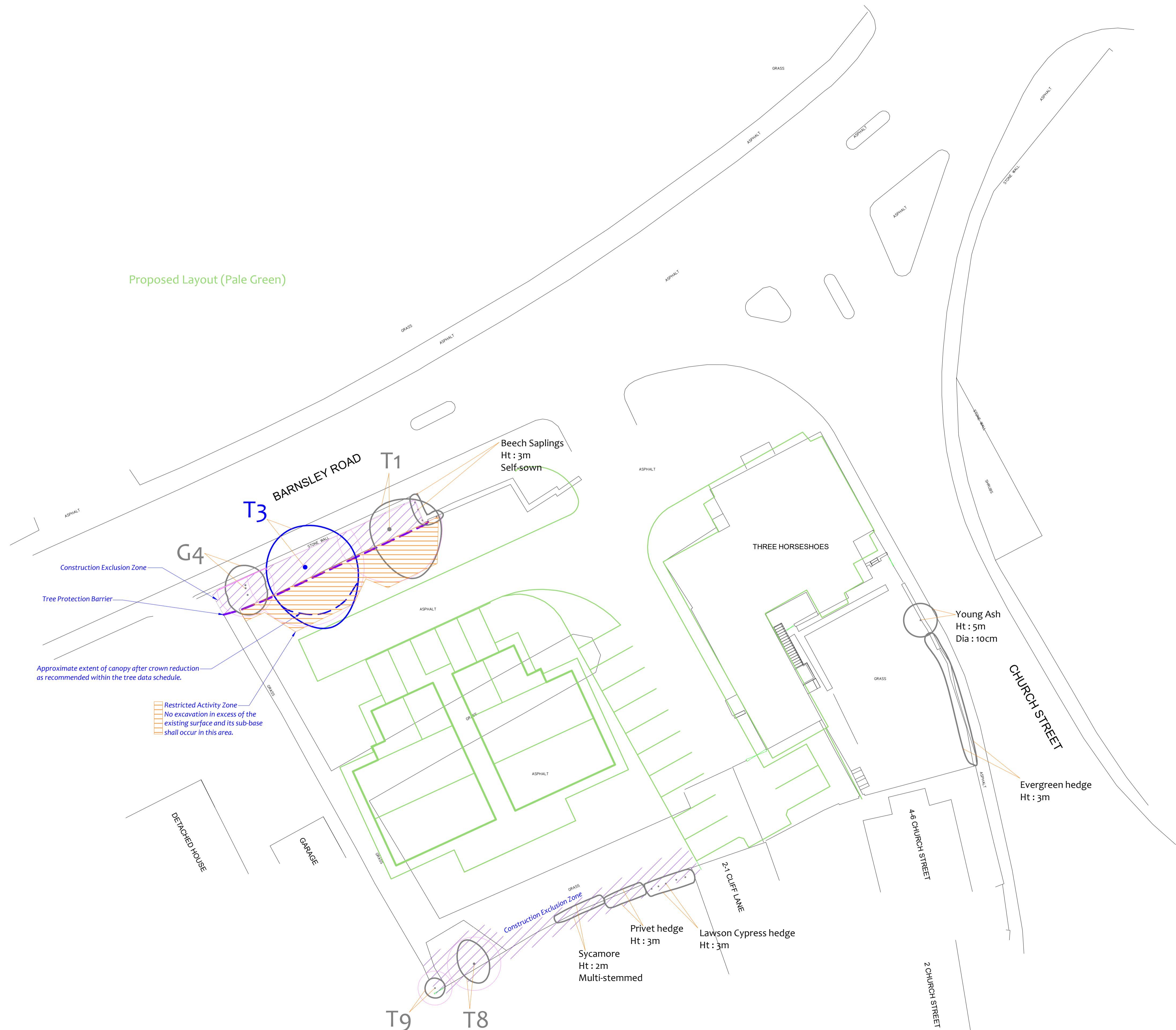
Construction Exclusion Zones

- Within Construction Exclusion Zones (shaded purple on the Tree Protection Plan) the following restrictions shall apply:
- Fencing shall be erected and maintained throughout the entire project as indicated on the Tree Protection Plan and specified in
 - Tree Protection Barriers.
 - No construction activity whatsoever shall occur.
 - No tree works, other than those specified in this report shall be undertaken.
 - No alterations of ground levels or conditions.
 - No chemicals or cement washings permitted.
 - No excavation whatsoever.
 - No temporary structures.
 - No spoil shall be stored.
 - No fires shall be permitted.
 - All hazardous materials (including non-essential cement products) shall be forbidden.

Restricted Activity Zone

- Where it is proposed to remove an existing hard surface over Root Protection Areas (Restricted Activity Zone - shaded orange on the Tree Protection Plan) the following restrictions shall apply:
- The existing hard surfacing shall remain in place throughout the entire construction project or until it is replaced with ground protection measures as specified in Section 5. No vehicle shall pass over this zone unless a permanent hard surface, or ground protection, is in place.
 - No excavation in excess of the existing surface and its sub-base shall occur.
 - Hand operated tools may be used to lift existing surface. Alternatively, mechanical excavators may be used so long as they operate from outside Root Protection Areas and are carefully marshalled by the appointed arborist or local authority tree officer.
 - If roots are encountered in excess of 25mm diameter, they shall be retained wherever possible and protected with damp sacking during times that they are unearthed. Any roots in excess of 100mm that need to be severed shall be pruned with secateurs.
 - Any soils used to raise ground levels back to the original level shall be fertile granular top soil. Proposed soil levels shall not exceed existing ground levels.
 - Storage of materials shall be limited to that which is required for the task in hand. Heavy materials that require storage for more than two days shall be stored outside the Restricted Zone.
 - No spoil shall be stored.
 - No fires shall be permitted.
 - All hazardous materials (including non-essential cement products) shall be forbidden.
 - No machinery in excess of 3m tall shall pass through or operate in this zone unless carefully marshalled in order to avoid damage to branches.

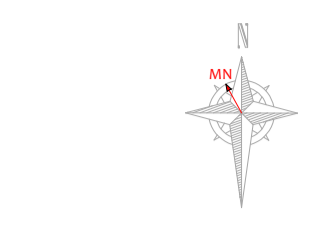
See Section 5 for more restrictions that apply throughout the site



Proposed Layout (Pale Green)

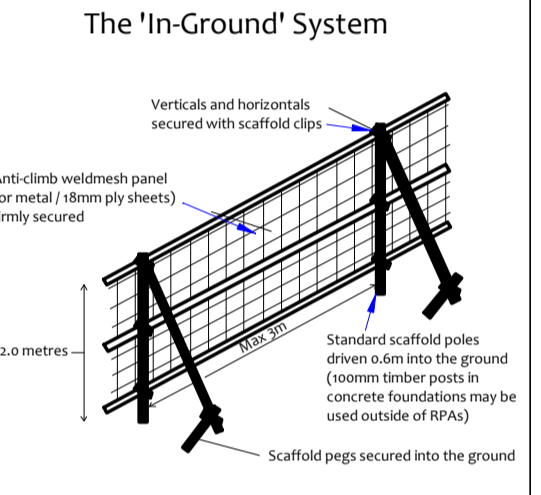
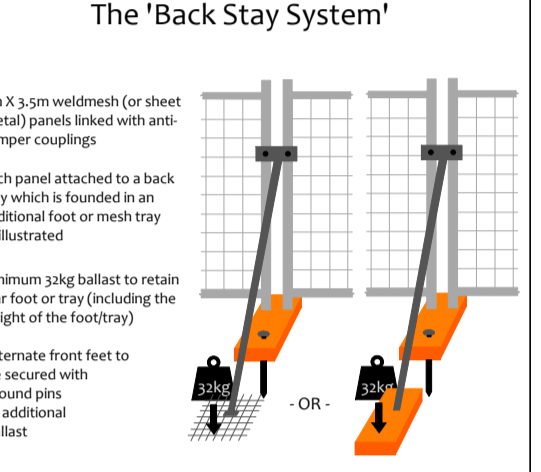
Approximate extent of canopy after crown reduction as recommended within the tree data schedule.

- Restricted Activity Zone
- No excavation in excess of the existing surface and its sub-base shall occur in this area.



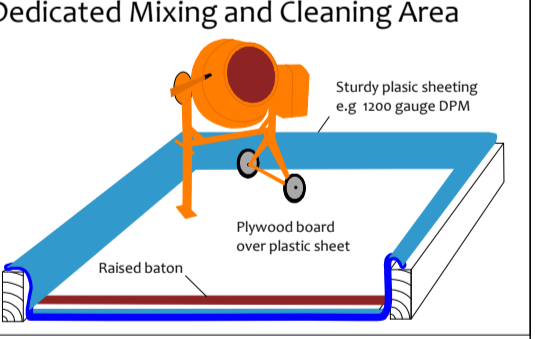
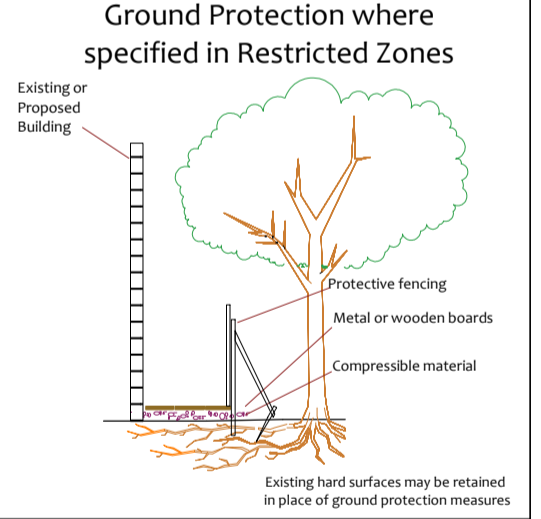
Tree Protection Plan

- ### Tree Protection Barriers:
- Fixed protective barrier:** The 'In-Ground System' or the 'Backstay System'. To remain in place for all construction activity.
 - Construction Exclusion Zone:** Stem protected to a height of 2.5m with thick cloth & wire. Tree Protection Boring 1.2 x 1.2 x 2.4m high 25mm plywood.
 - Movable protective barrier:** The 'Backstay System'. To remain in place except when approved works are being undertaken in the Restricted Zone.
 - Orange Barrier Mesh Fencing:** HT 1m, on steel fencing posts and wooden posts. To remain in place throughout all construction activity.



- ### Construction Exclusion Zone
- Within this area the following restrictions shall apply:
- No excavation or land regrading whatsoever.
 - No storage of materials, rubble, soil or spoil.
 - No fires within the exclusion zone or within 10m of any tree canopy.
 - No site cabins or other temporary structures.
 - No discharge of polluted water, cement or chemicals of any kind.
 - No use of any machinery, or passage or parking of vehicles.
 - No tree works without council consent.

Restricted Activity Zones



Drawing No: CCL 09698 / TPP Rev: 1

Title: Tree Protection Plan (Existing Layout with Proposals Overlaid)

Site: Three Horse Shoes Briery, 572 9JT

Scale: 1:2000 Paper Size: A1

Tree Retention Categories

	Category A tree	Trees of high quality with an estimated life expectancy of 40+ years. Usually large trees with significant presence or smaller trees with excellent form. Retention of these trees is highly desirable.
	Category B tree	Trees of moderate quality with a life expectancy of 20+ years. Usually maturing trees, or younger trees with good form. Retention of these trees is desirable though less than Category A trees.
	Category C tree	Unremarkable trees of low quality and merit. Individual specimens are not considered to be a material planning consideration.
	Category U tree	Trees unsuitable for retention due to their very poor condition.

Tree Protection Plan

BS 5837 Root Protection Area (radius = 1xstem diameter)

Root Protection Area needing amendment due to site conditions, e.g. presence of existing road or building.

Root Protection Area having been amended to account for site conditions

T1 = Tree No 1 G2 = Group No 2 H3 = Hedge No 3

MN = Measured North: Canopy spreads are sometimes N defined by site features. Often more accurate, especially where rows of trees are not aligned N/S or E/W.

Tree Ref.	Species	Height (m)	Root Protection Area	
			Radius (m)	Area (sq m)
T1	Grey Poplar	10	4.7	69
T2	Grey Poplar	8.5	5.0	80
T3	Grey Poplar	9	5.2	84
G4	Grey Poplar	10	1.9	12
T5	Bird Cherry	6	3.6	41
T6	Plum	6	1.8	10
T7	Cherry	6	4.4	62
T8	Holly	7	2.6	22
T9	Holly	5	1.7	9