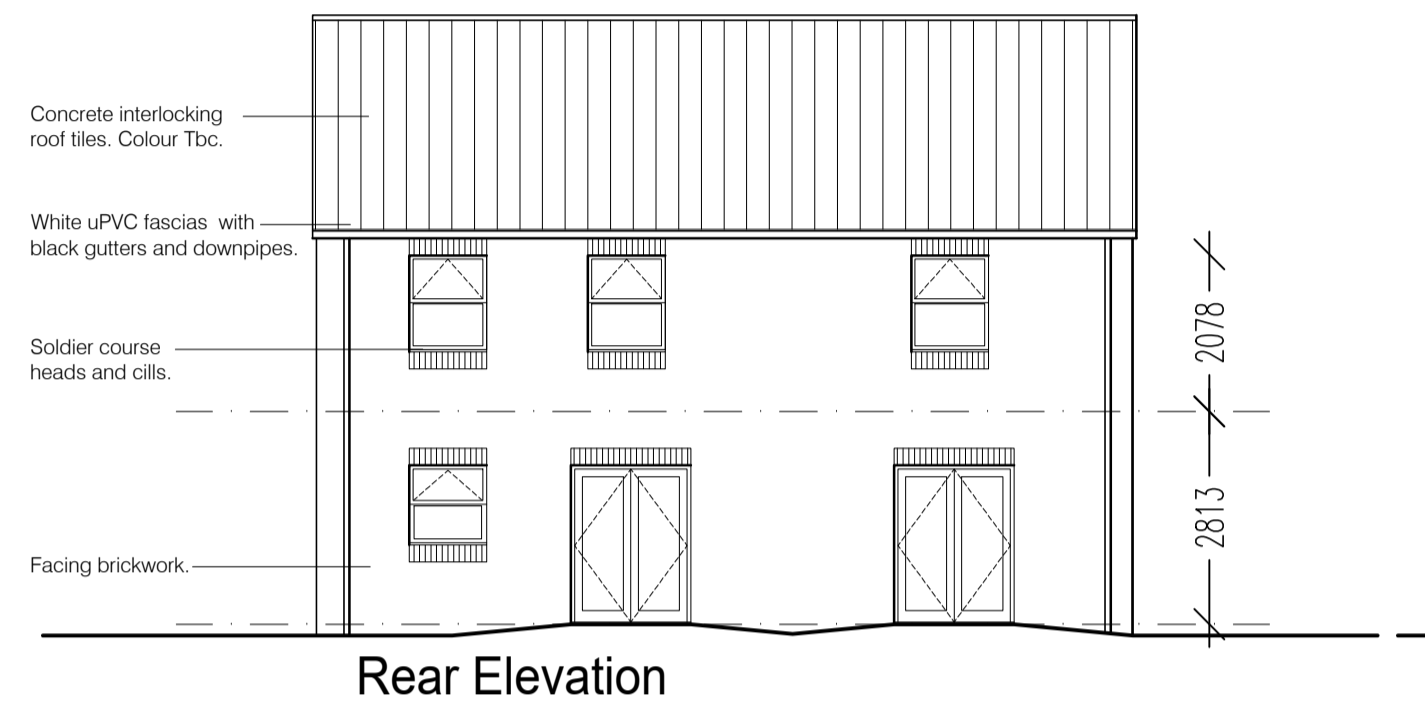




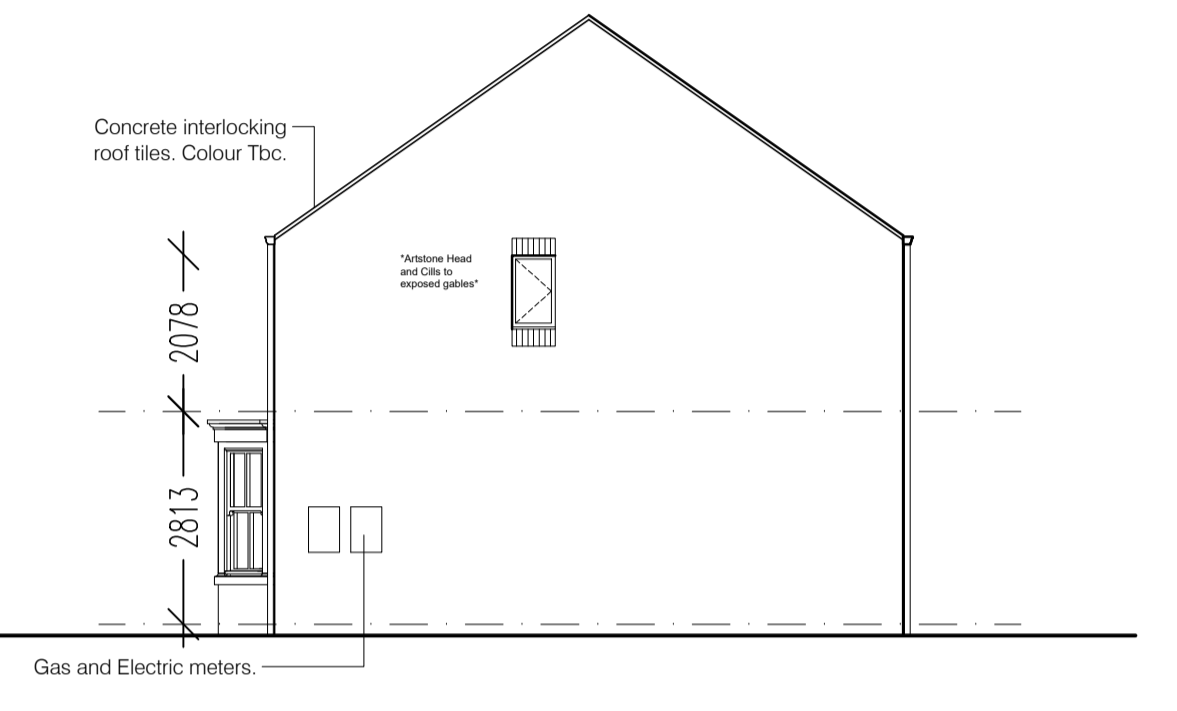
Front Elevation



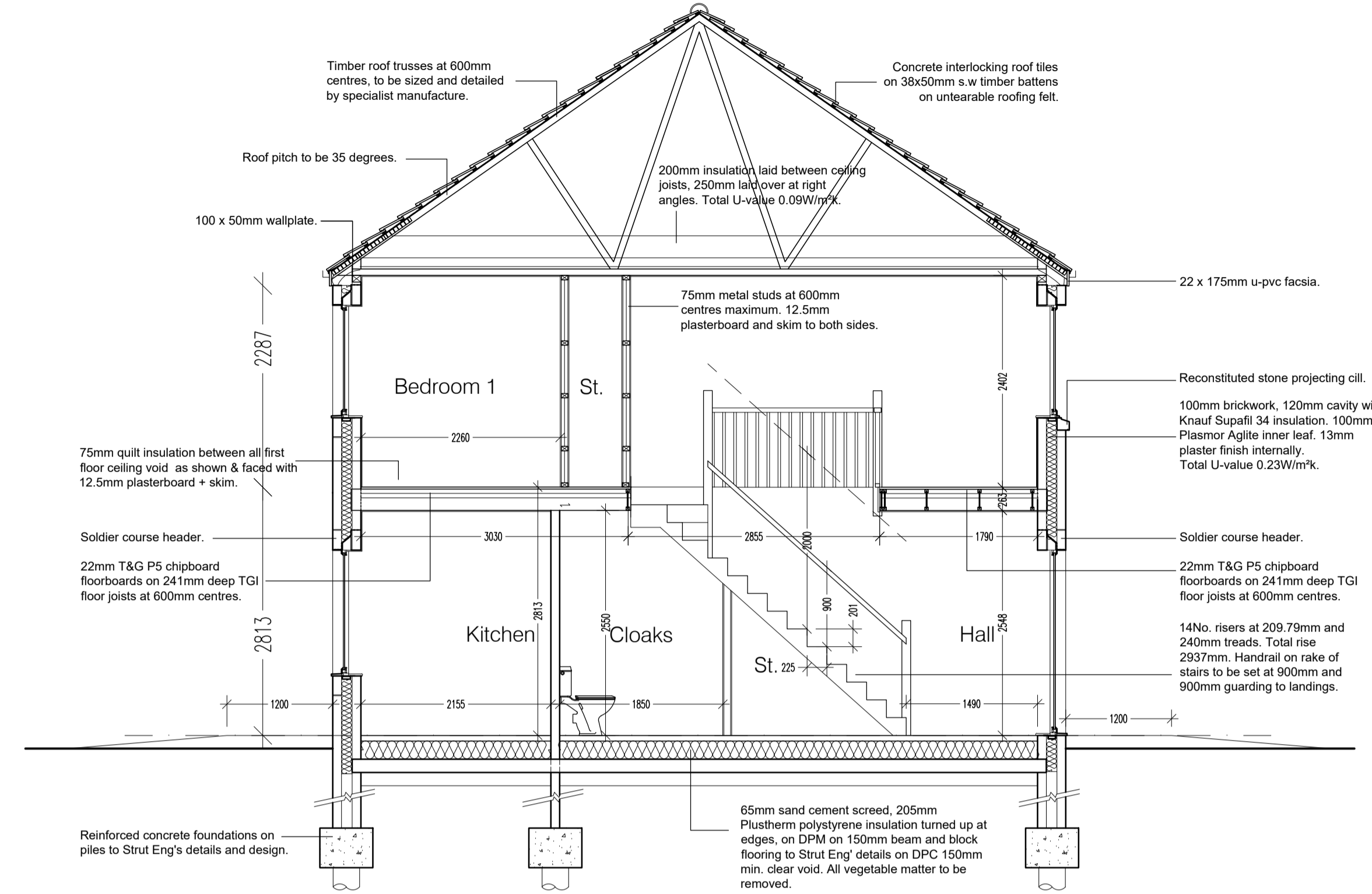
Side Elevation



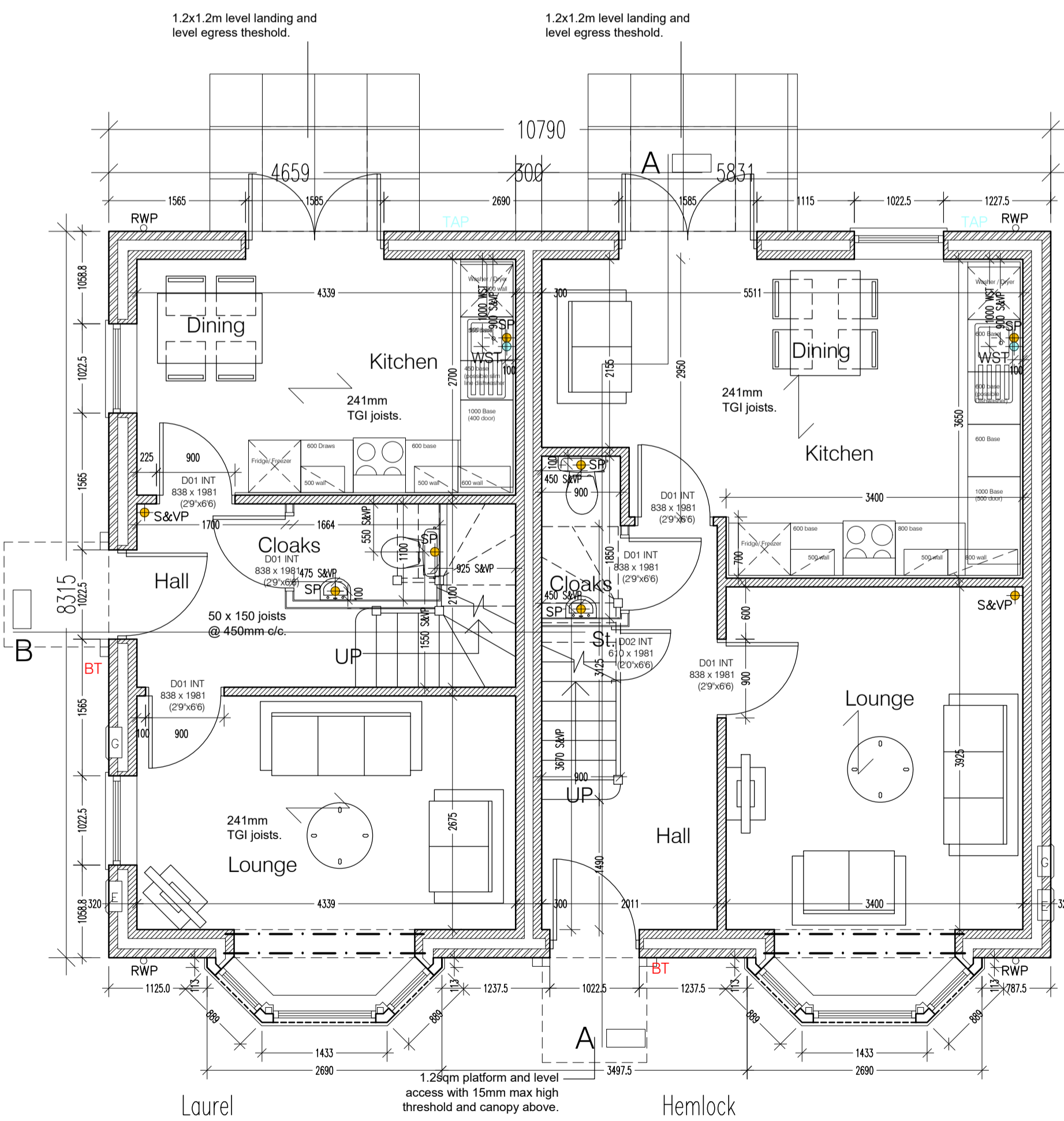
Rear Elevation



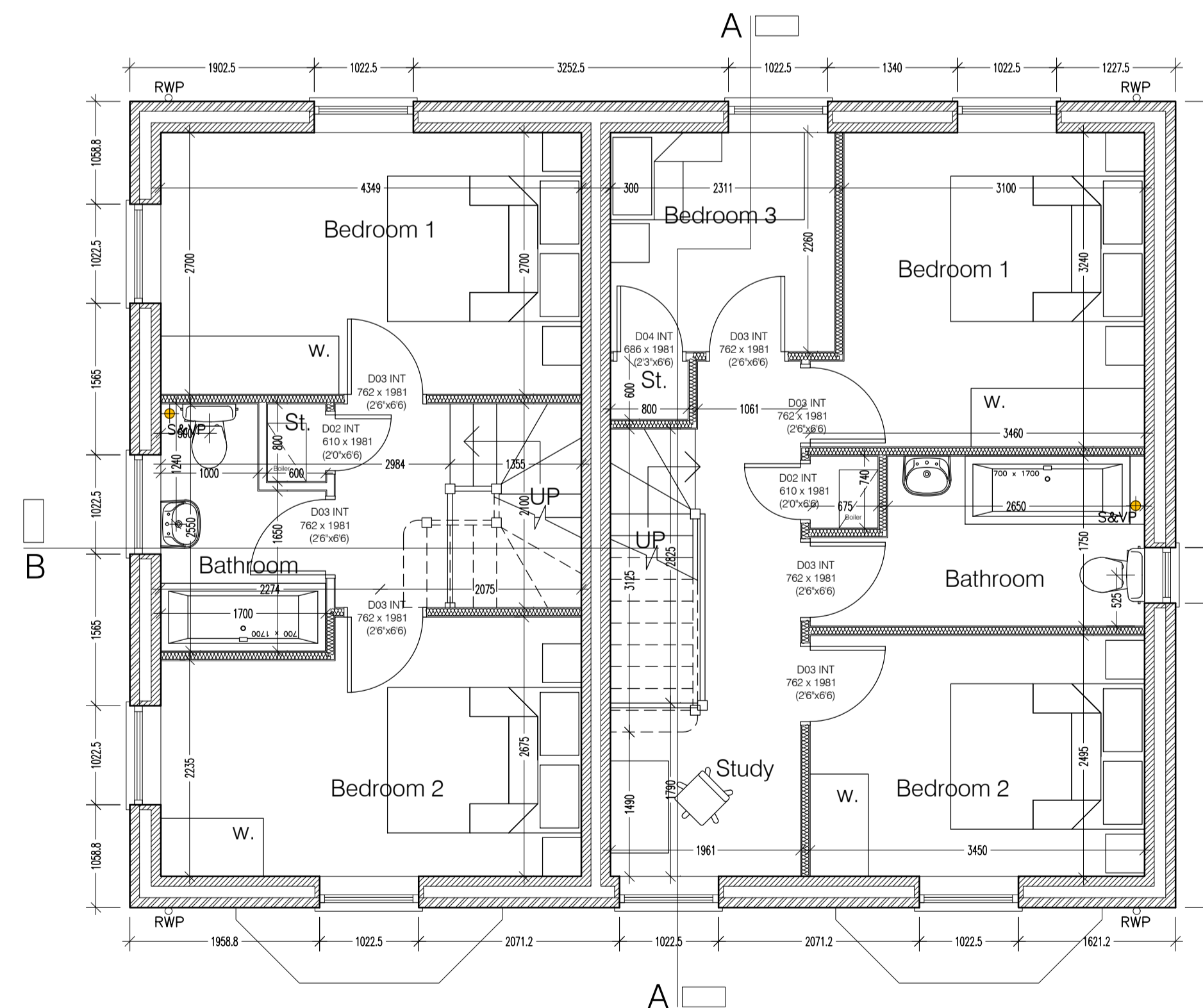
Side Elevation



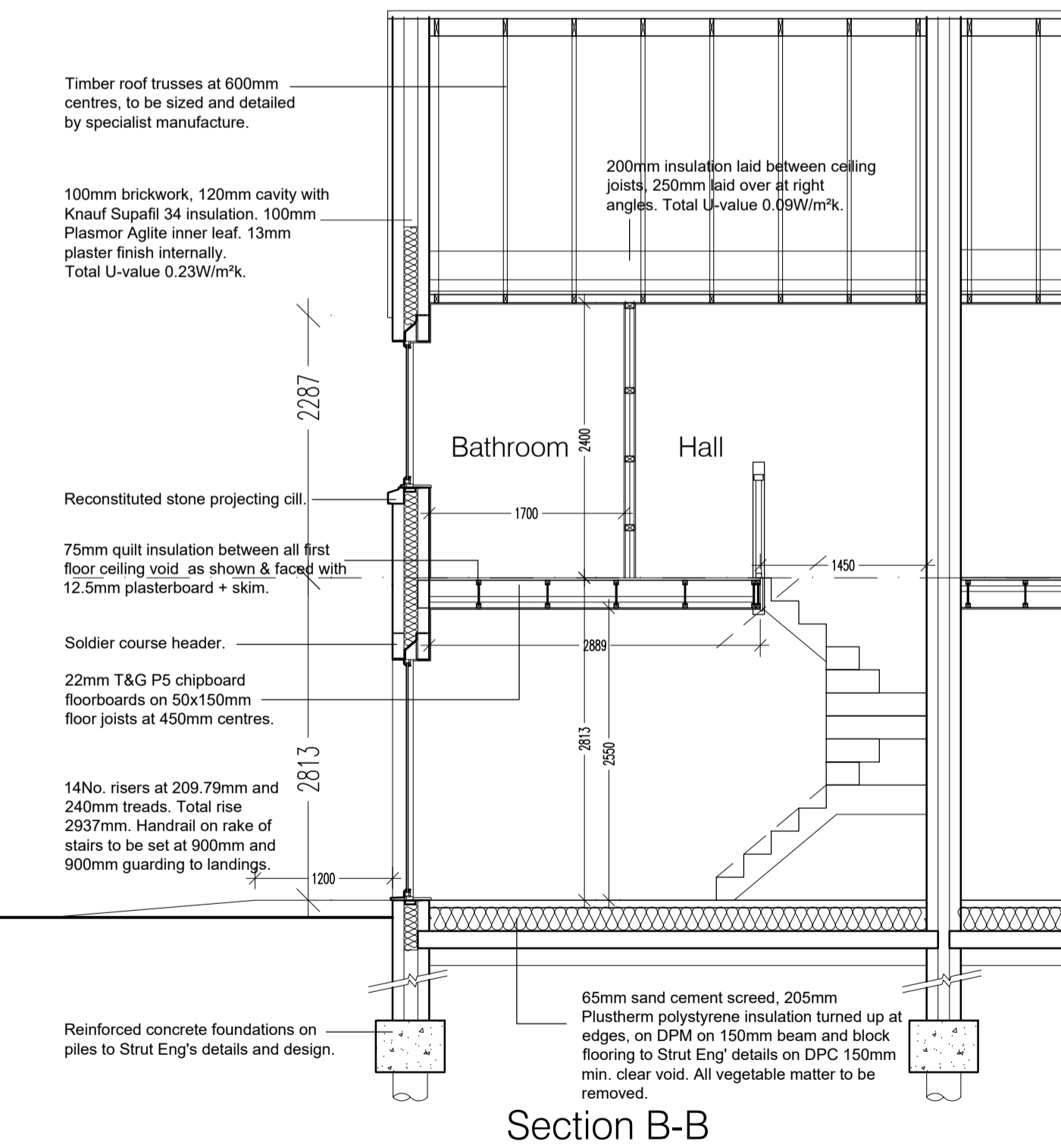
Section A-A



Ground Floor Plan



Residential Development at
Doncaster Road, Darfield, Barnsley



Section B-B

Type Laurel - 2 Bedroom 2 storey

Type Hemlock - 4 Bedroom 2 storey

Rev E 5th Mar '25 Floor heights adjusted and stairs updated.
Rev D 7th Jan '25 Artstone Note added for exposed gables.
Rev C 21st Jul '23 Wall Cavity updated to 120mm cavity
Rev B 22nd Jun '22 SVP positions amended and Gully removed.
Rev A 17th Jan '19 Window to bed 4 corrected in plan.

Project:
Saul Homes
Standard House Types

Title:
House Type 'Laurel' & Hemlock'
Ground and First Floor Plan
Elevations & Sections A-A & B-B

Scale: 1:50 1:100 A1 D1 Wm PU Date: 11/19 Checked:
Drawing no: SH / ST / 36 Rev: E

Burnwood Office Park
Common Road
Brierley
Barnsley
S72 9ET
T: 01226 707090
F: 01226 707091
info@saulhomes.co.uk
www.saulhomes.co.uk

