

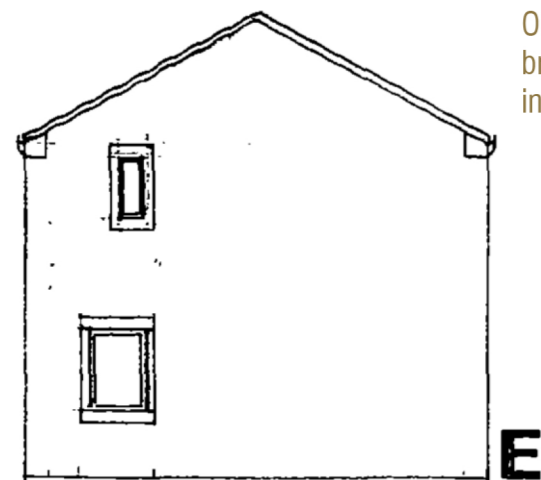
MATERIALS SPECIFICATION
Ref MBD 01

Materials Specification added by MBooth Design
 April 2024 with the kind permission of
 Michael A Clyncb

Michael A. Clyncb
 Architect, Town Planner, Property Consultant
 DIP.ARCH. DIP. T.P. A.R.I.B.A. F.R.S.A.

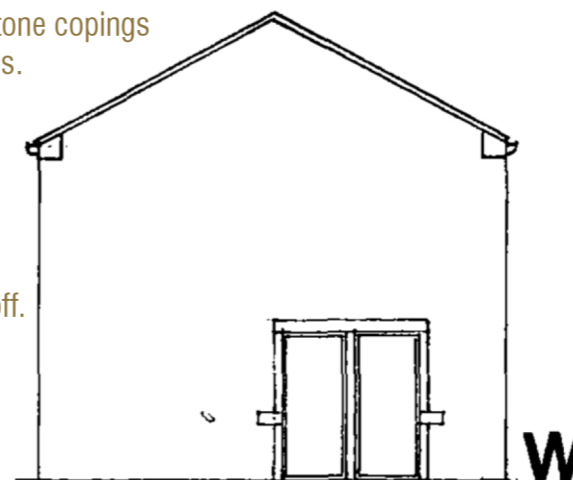
14 Huddersfield Road, Ingbirchworth, Penistone
 Sheffield S36 7GF

Tel: 01226 766308



Ogee section gutters on rise and fall
 brackets and circular rainwater pipes
 in aluminium with black finish.

E

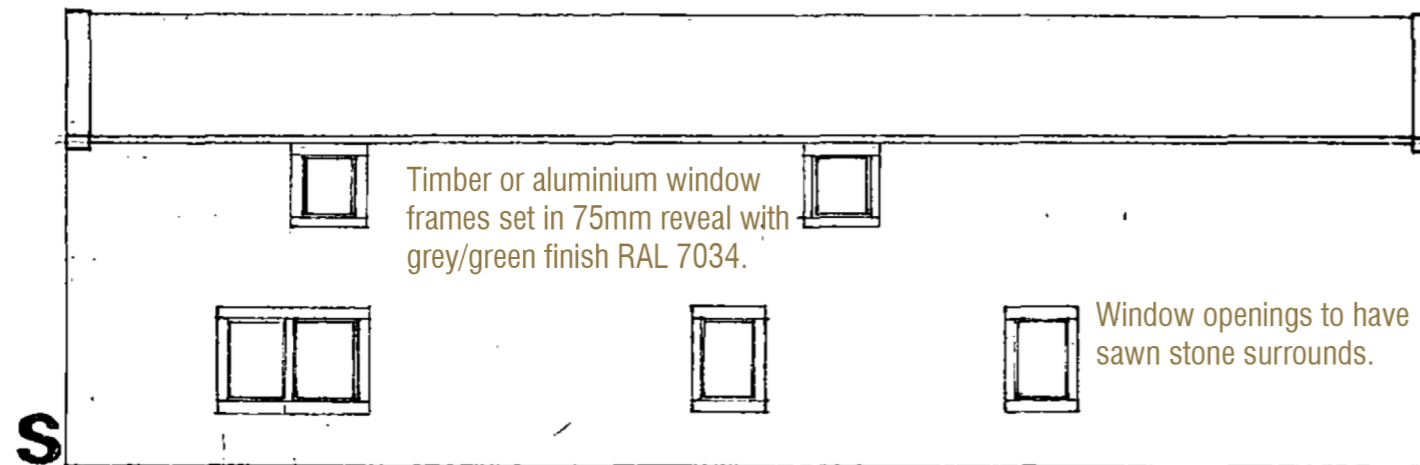


Sawn stone copings
 to verges.

W

External walling in natural regularly coursed
 local sandstone flush pointed with lime based
 grit sand mortar finished slightly back from
 the aris of the stone and brushed or bagged off.

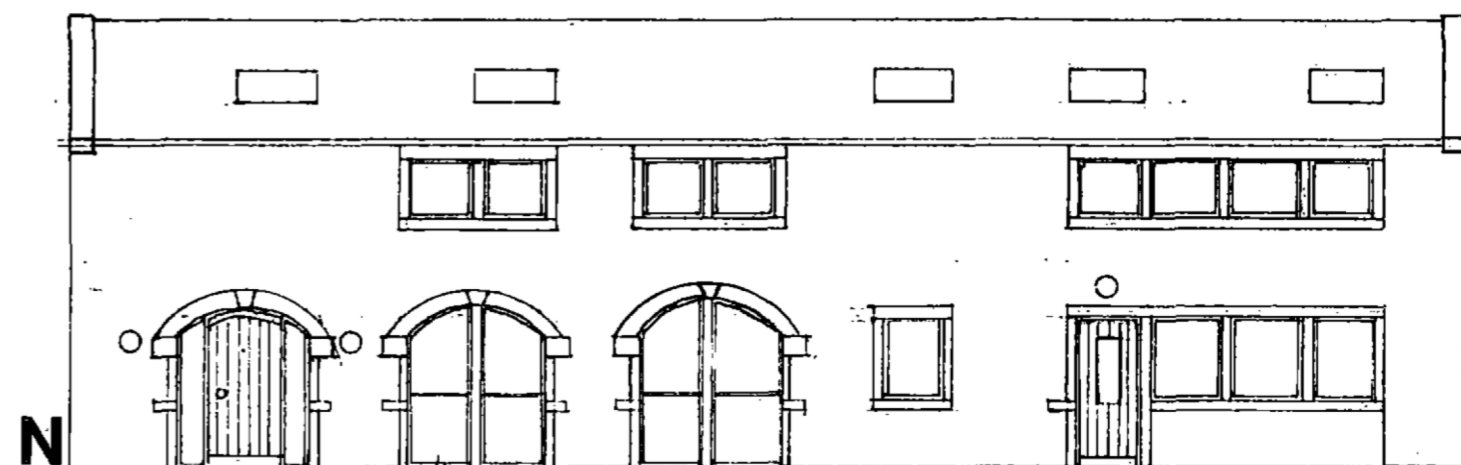
Roofing in Bradstone Old Quarried
 artificial stone slates in diminishing
 courses colour ref:Lichen Green.



Timber or aluminium window
 frames set in 75mm reveal with
 grey/green finish RAL 7034.

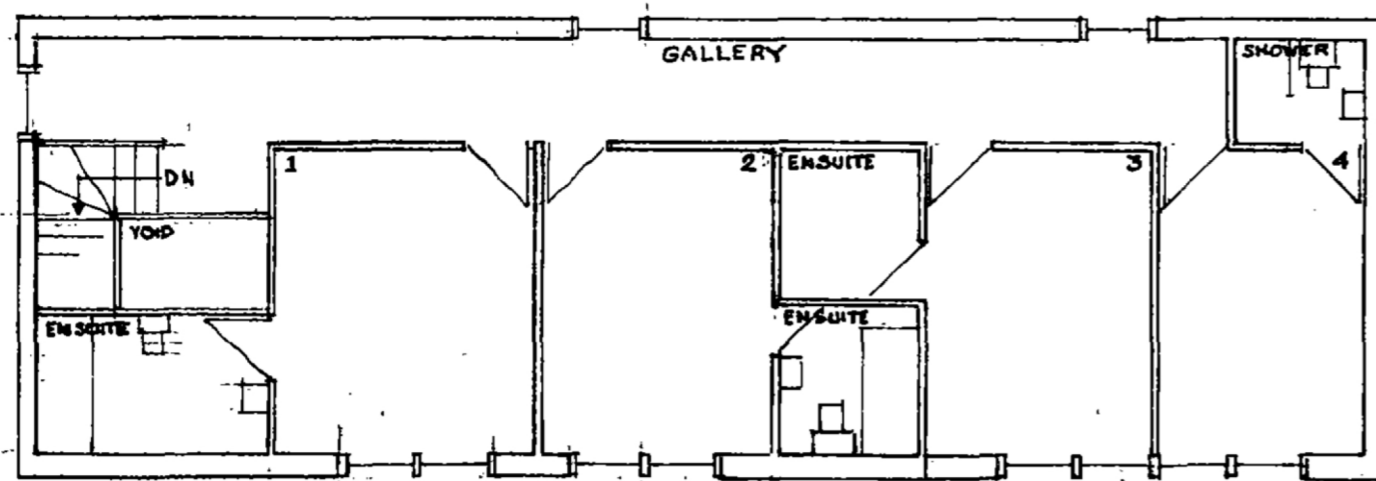
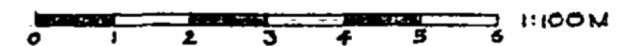
S

Window openings to have
 sawn stone surrounds.

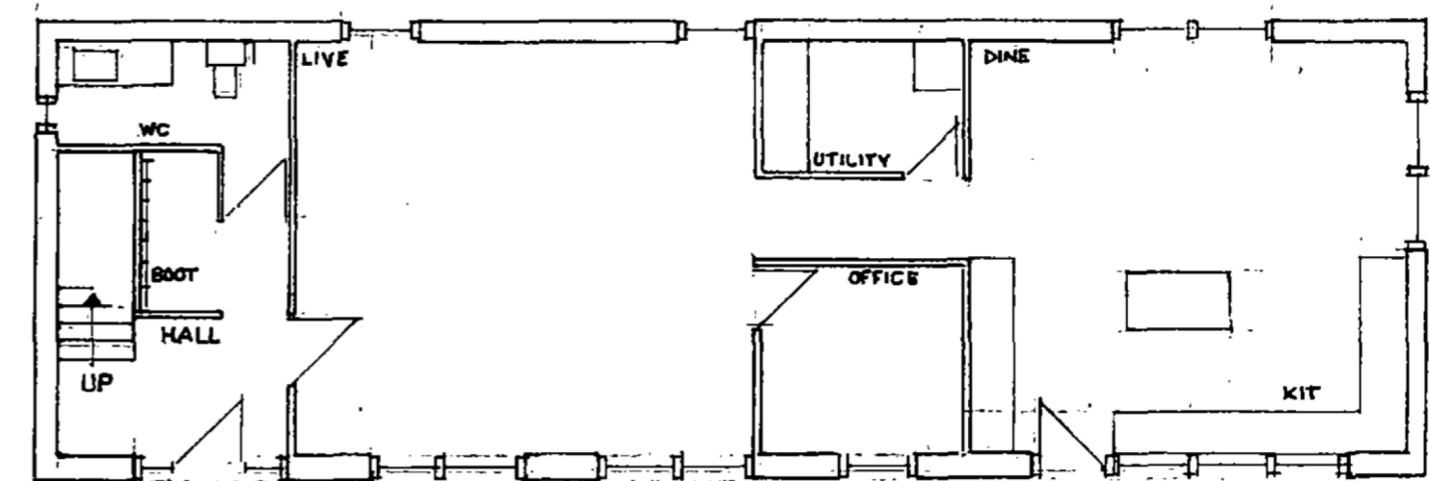


N

Doors and larger openings to have
 aluminium frames with RAL 7034
 finish as before.



FF



GF