



Store Name: Darton
Store No: 8188
Futurama W.O: 127189
Store Type: Pop In - Mainstream
Programme: Rollback
Address: Church Street,
Darton, Barnsley,
S75 5HF
CAD ref: P4F6M2
Project Manager: Steve Brown

Revision: 14/06/16 - KP - Original Scheme

delivering
branded
environments™



Telephone:
0113 270 5595
Facsimile:
0113 277 1143
E-mail:
postbox@futurama.ltd.uk

Olympia House
Lockwood Court
Middleton Grove
Leeds
LS11 5TY
United Kingdom



Existing - Elevation 1

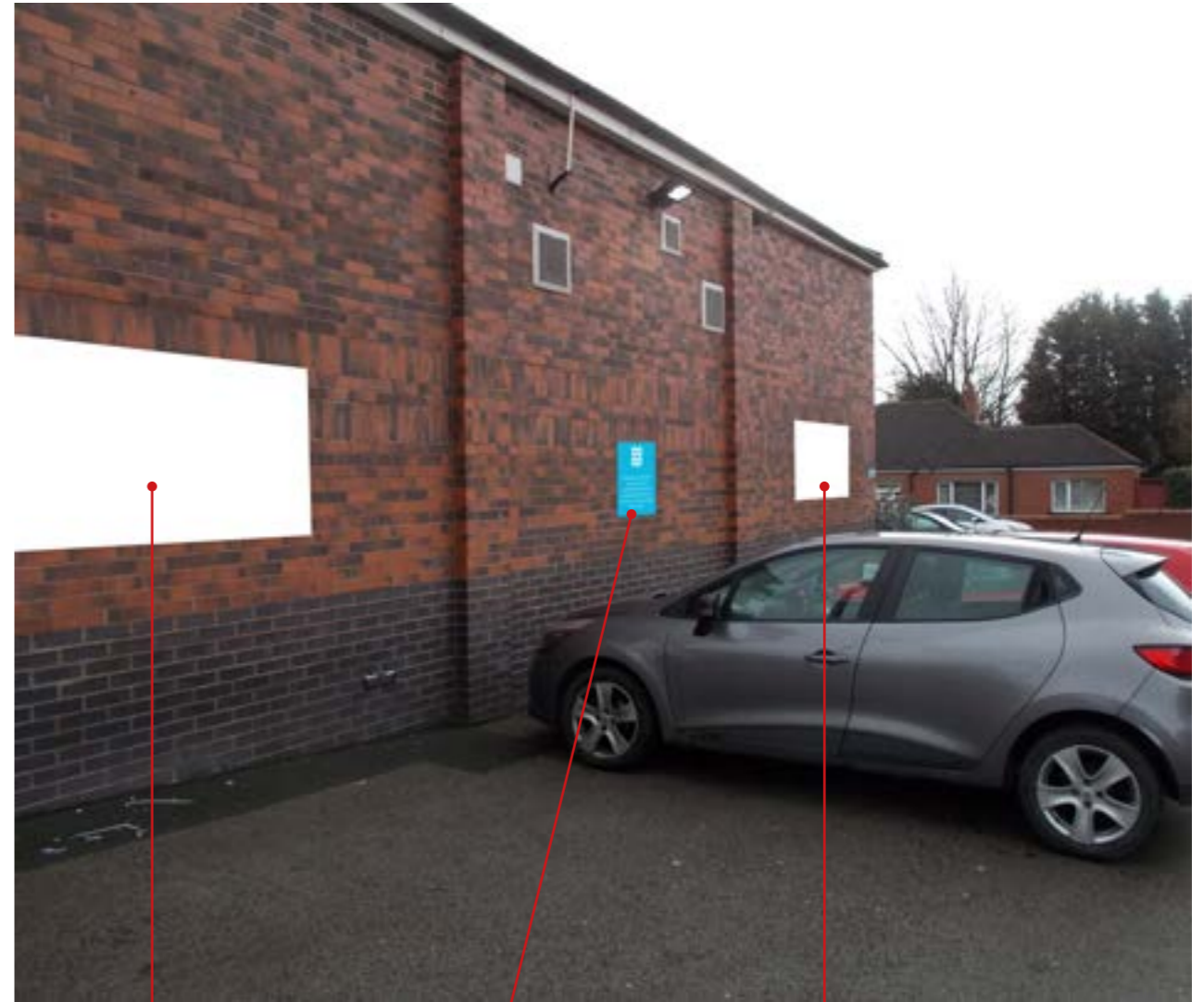
Store Name: Darton
Store No: 8188
Futurama W.O: 127189

Telephone:
0113 270 5595
Facsimile:
0113 277 1143
E-mail:
postbox@futurama.ltd.uk

Olympia House
Lockwood Court
Middleton Grove
Leeds
LS11 5TY
United Kingdom

delivering
branded
environments™





Banner
Frame B

Sign D1 -
Parking disclaimer

Banner
Frame C



Existing / Proposed - Elevation 2

Store Name: Darton
Store No: 8188
Futurama W.O: 127189

Telephone:
0113 270 5595
Facsimile:
0113 277 1143
E-mail:
postbox@futurama.ltd.uk

Olympia House
Lockwood Court
Middleton Grove
Leeds
LS11 5TY
United Kingdom

delivering
branded
environments™





Sign E -
Keep Clear

Sign D2 -
Parking disclaimer

Banner
Frame D



Existing - Elevation 3

Store Name: Darton
Store No: 8188
Futurama W.O: 127189

Telephone:
0113 270 5595
Facsimile:
0113 277 1143
E-mail:
postbox@futurama.ltd.uk

Olympia House
Lockwood Court
Middleton Grove
Leeds
LS11 5TY
United Kingdom

delivering
branded
environments™





Existing parking disclaimer to be removed and wall to be made good.

Road markings in car park to be re-painted

Sign E - Disabled disclaimer (New position)



Existing - Elevation 4

Store Name: Darton
 Store No: 8188
 Futurama W.O: 127189

Telephone: 0113 270 5595
 Facsimile: 0113 277 1143
 E-mail: postbox@futurama.ltd.uk

Olympia House
 Lockwood Court
 Middleton Grove
 Leeds
 LS11 5TY
 United Kingdom

delivering
 branded
 environments™





Salvation Army bin to be rebranded by the external signage contractor – Vinyl design pending



Photos of store

Store Name: Darton
Store No: 8188
Futurama W.O: 127189

Telephone:
0113 270 5595
Facsimile:
0113 277 1143
E-mail:
postbox@futurama.ltd.uk

Olympia House
Lockwood Court
Middleton Grove
Leeds
LS11 5TY
United Kingdom

delivering
branded
environments™





3rd party sign to be rebranded by the external signage contractor – Vinyl design pending



Photos of store

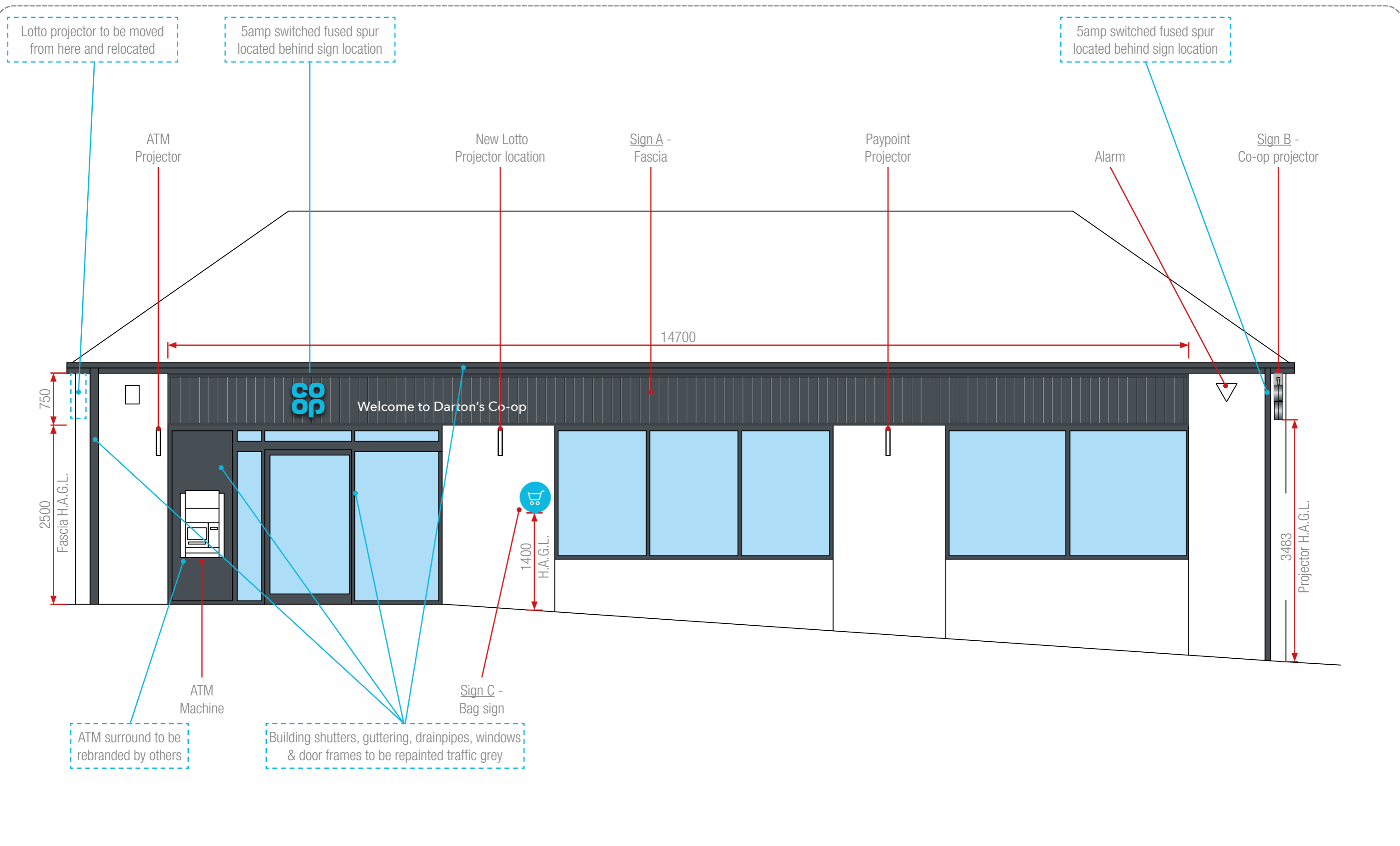
Store Name: Darton
Store No: 8188
Futurama W.O: 127189

Telephone:
0113 270 5595
Facsimile:
0113 277 1143
E-mail:
postbox@futurama.ltd.uk

Olympia House
Lockwood Court
Middleton Grove
Leeds
LS11 5TY
United Kingdom

delivering
branded
environments™





Proposed Elevation 1
Scale 1:50 @A3

Store Name: Darton
Store No: 8188
Futura W.O: 127189

Telephone: 0113 270 5595
Facsimile: 0113 277 1143
E-mail: postbox@futura.ltd.uk

Olympia House
Lockwood Court
Middleton Grove
Leeds
LS11 5TY
United Kingdom

delivering
branded
environments™



Sign A - Fascia, 14700 x 750mm (W&H) including upstand

Sign B - Co-op projector



Scale 1:50 @ A3

Sign A Specifications:

Fascia

Aluminium slat fascia to suit site conditions.

Fascia constructed from individual Aluminium extrusions. Perimeter support extrusion fixed to the building substrate with suitable fixings, Aluminium vertical slats mounted and fixed to the support extrusion and trimmed around the perimeter with a chamfered trim.

Slat and trim to be finished Dark Grey Wood effect:

Decoral powder coating: 8G-940-A005 (lab code FP 714/38)

Decoral sublimatic Film: 2217/19 L.

(CFP-EX-I/M & CFP-EX-G/DG & CFP-EX-H/DG & CFP-EX-A/DG)

Logo

500mm Single sided built up logo.(CFP-L-WM0500-WM/B)

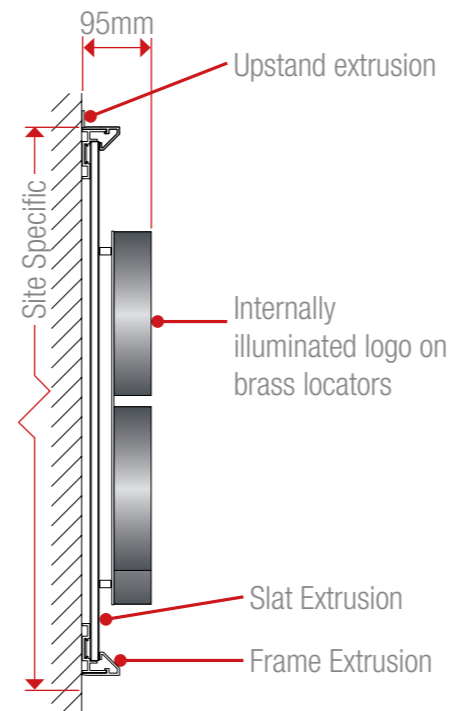
Steel mounting plate with individual built-up internally illuminated letters. Mounting plate to be 3mm Mild Steel fixed to building substrate with brass locator fixings.

3D built-up letters to have aluminium sides, 50mm deep with 5mm Co-op BLUE acrylic faces. All visible edges, aluminium returns & mounting plate to be finished Silver RAL 9006 60% gloss.

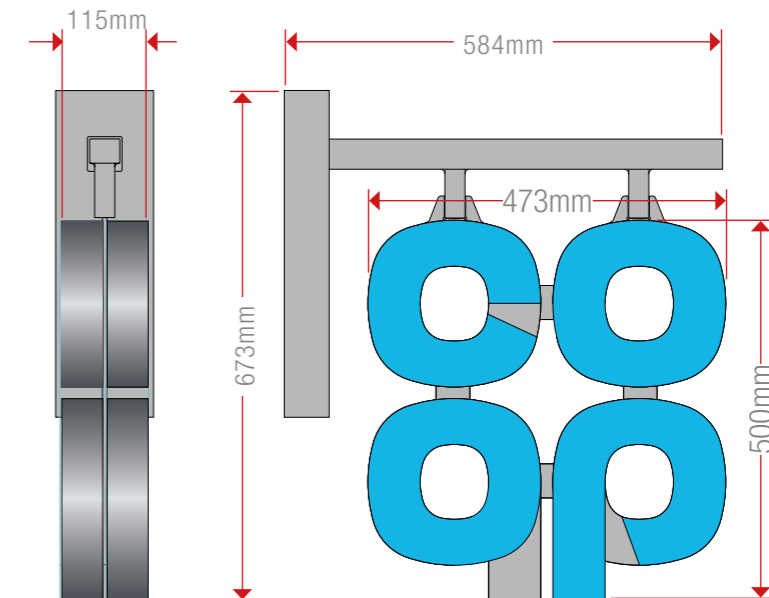
Internally illuminated by white LEDs.

Letter Count: 22

"Welcome to Anytown Co-op" 190mm to match 500mm/650mm logo to be from 5mm WHITE Perspex 069 Acrylic on locator snap fixings.(CFP-WL0650-A/W)



Logo Cross Section
Scale 1:10 @A3



Size 3 - 500mm
Scale 1:10

Sign B Specifications:

Projection sign size 3 (500mm) Internally Illuminated built up letters on both sides. Individual 3D letters constructed from silver aluminium side returns and Co-op BLUE acrylic faces - faces only to illuminate.

Fully welded 5mm Mild Steel wall mounting plate and support frame. Profile cut logo mounting plate from 5mm Mild Steel, welded to the hanging tubes. All visible steel work to be finished silver to match RAL 9006 60% gloss. (CFP-P-FF0500/B).



Collections

Store Name: Darton
Store No: 8188
Futurama W.O: 127189

Telephone:
0113 270 5595
Facsimile:
0113 277 1143
E-mail:
postbox@futurama.ltd.uk

Olympia House
Lockwood Court
Middleton Grove
Leeds
LS11 5TY
United Kingdom

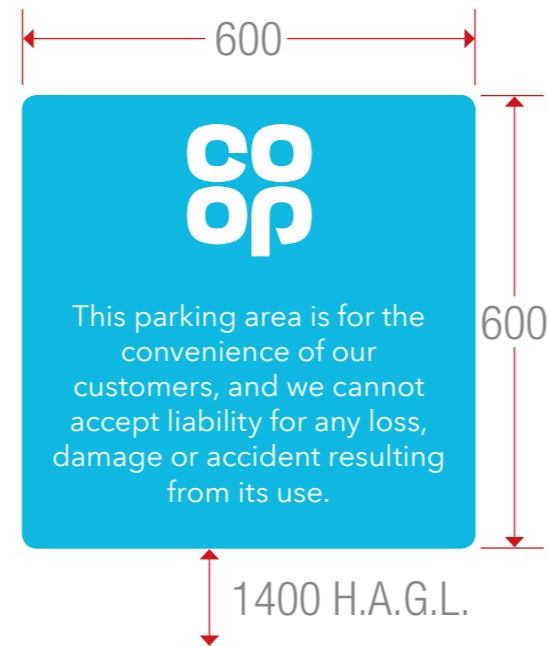
delivering
branded
environments™





Sign C - Scale 1:10

450mm dia. Circular parking icon "Trolley"
 3mm ACM with applied vinyl display &
 anti-graffitti laminate. 20mm radius corners.
 Non-illuminated.
 (CFP-CP-0450-I005)



Sign D1 & D2 - Scale 1:10

600mm x 600mm parking sign "Disclaimer".
 3mm ACM with applied vinyl display &
 anti-graffitti laminate. 20mm radius corners.
 Non-illuminated.
 (CFP-CP-0600-I028)



Sign E - Scale 1:10

600mm x 600mm parking sign "Keep Clear".
 3mm ACM with applied vinyl display &
 anti-graffitti laminate. 20mm radius corners.
 Non-illuminated.
 (CFP-CP-WM-0600-I029)



Sign F - Scale 1:10

600mm x 600mm parking sign "Disabled".
 3mm ACM with applied vinyl display &
 anti-graffitti laminate. 20mm radius corners.
 Non-illuminated.
 (CFP-CP-0600-I030)



Collections

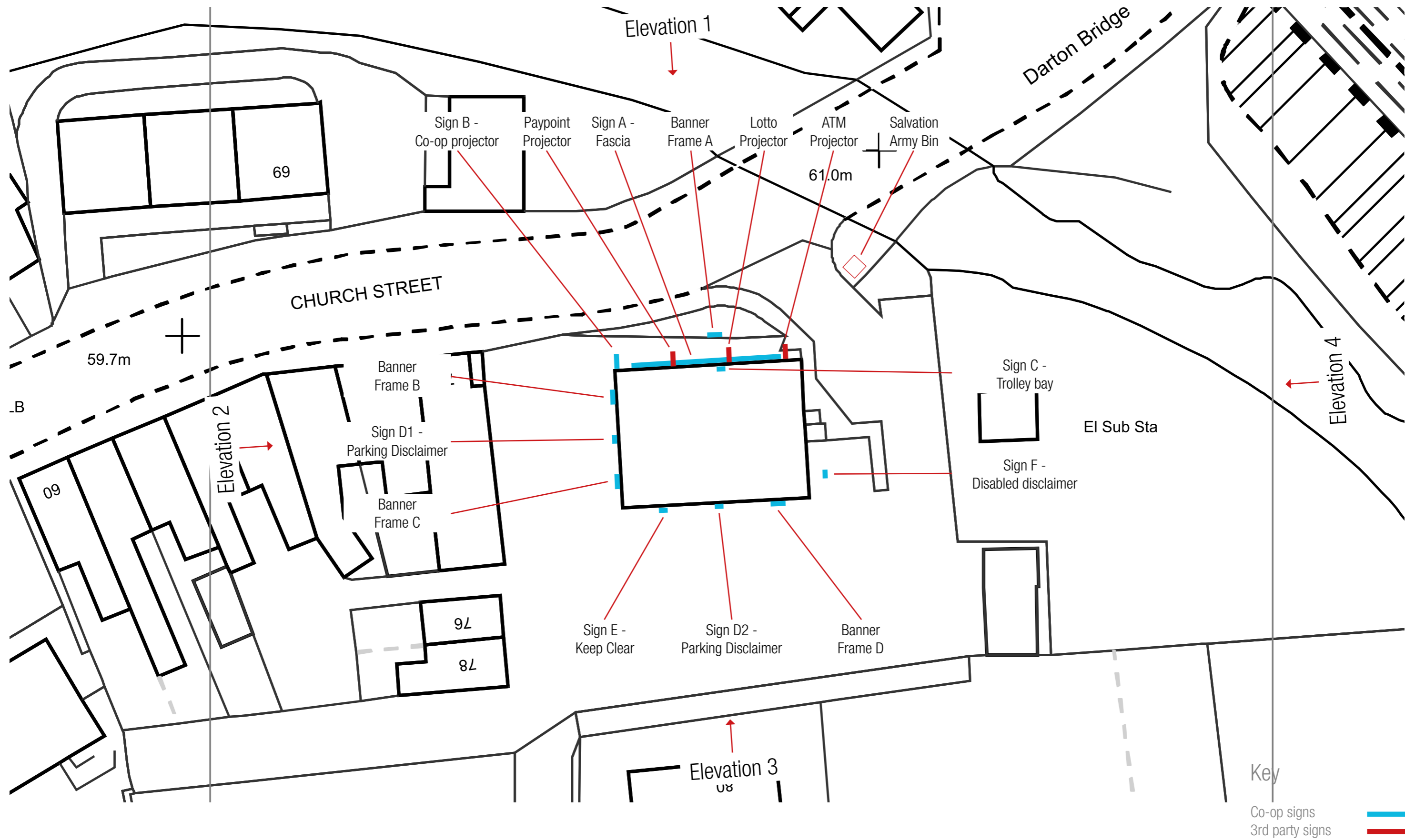
Store Name: Darton
 Store No: 8188
 Futurama W.O: 127189

Telephone:
 0113 270 5595
 Facsimile:
 0113 277 1143
 E-mail:
 postbox@futurama.ltd.uk

Olympia House
 Lockwood Court
 Middleton Grove
 Leeds
 LS11 5TY
 United Kingdom

delivering
 branded
 environments™





Proposed Site Plan
Scale: NTS

* 3rd party signs to remain in current locations

Store Name: Darton
Store No: 8188
Futura W.O: 127189

Telephone: 0113 270 5595
Facsimile: 0113 277 1143
E-mail: postbox@futura.ltd.uk

Olympia House
Lockwood Court
Middleton Grove
Leeds
LS11 5TY
United Kingdom

delivering
branded
environments™

