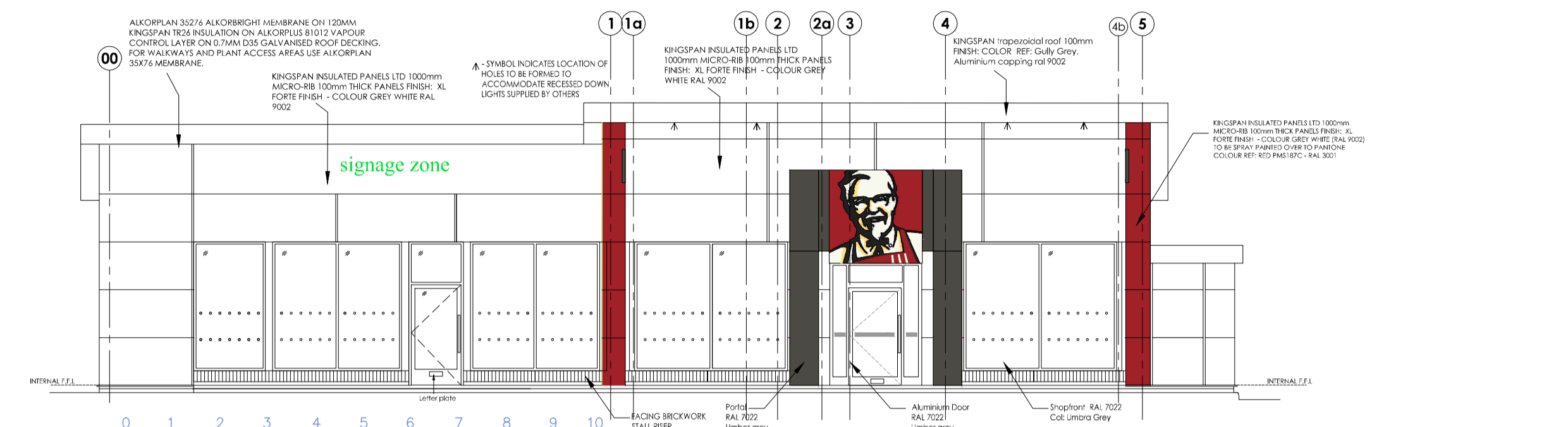
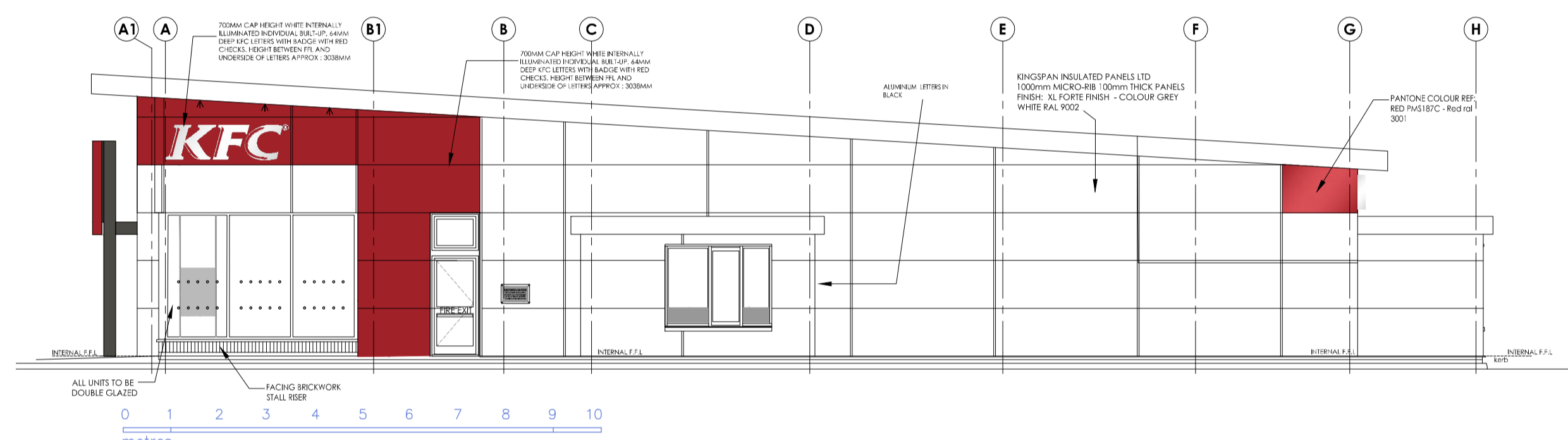


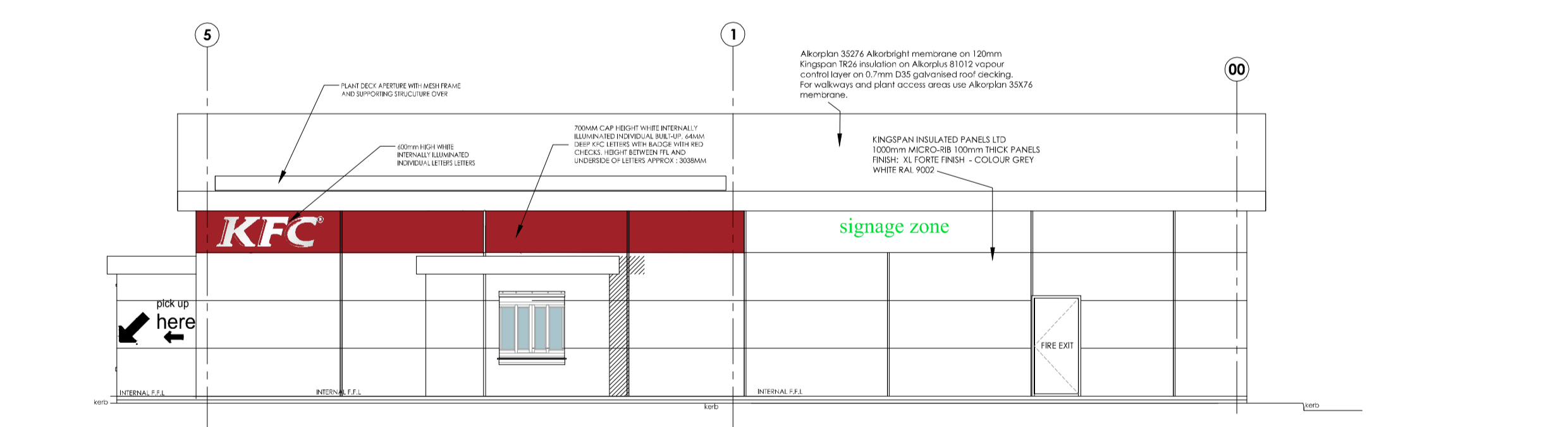
proposed side elevation A
scale 1:100 @A1



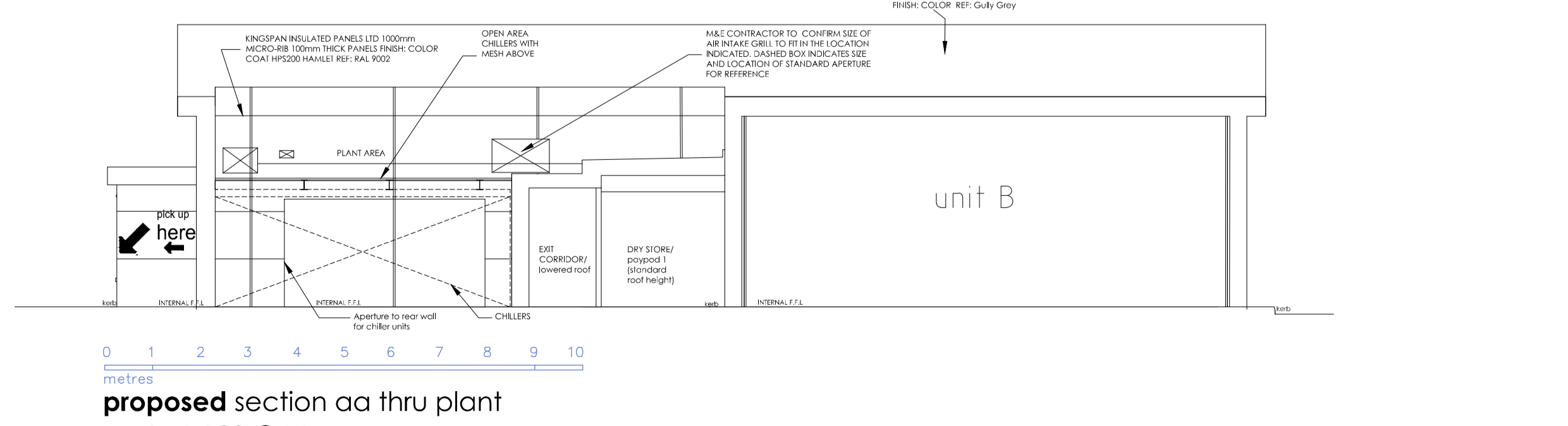
proposed front elevation B
scale 1:100 @A1



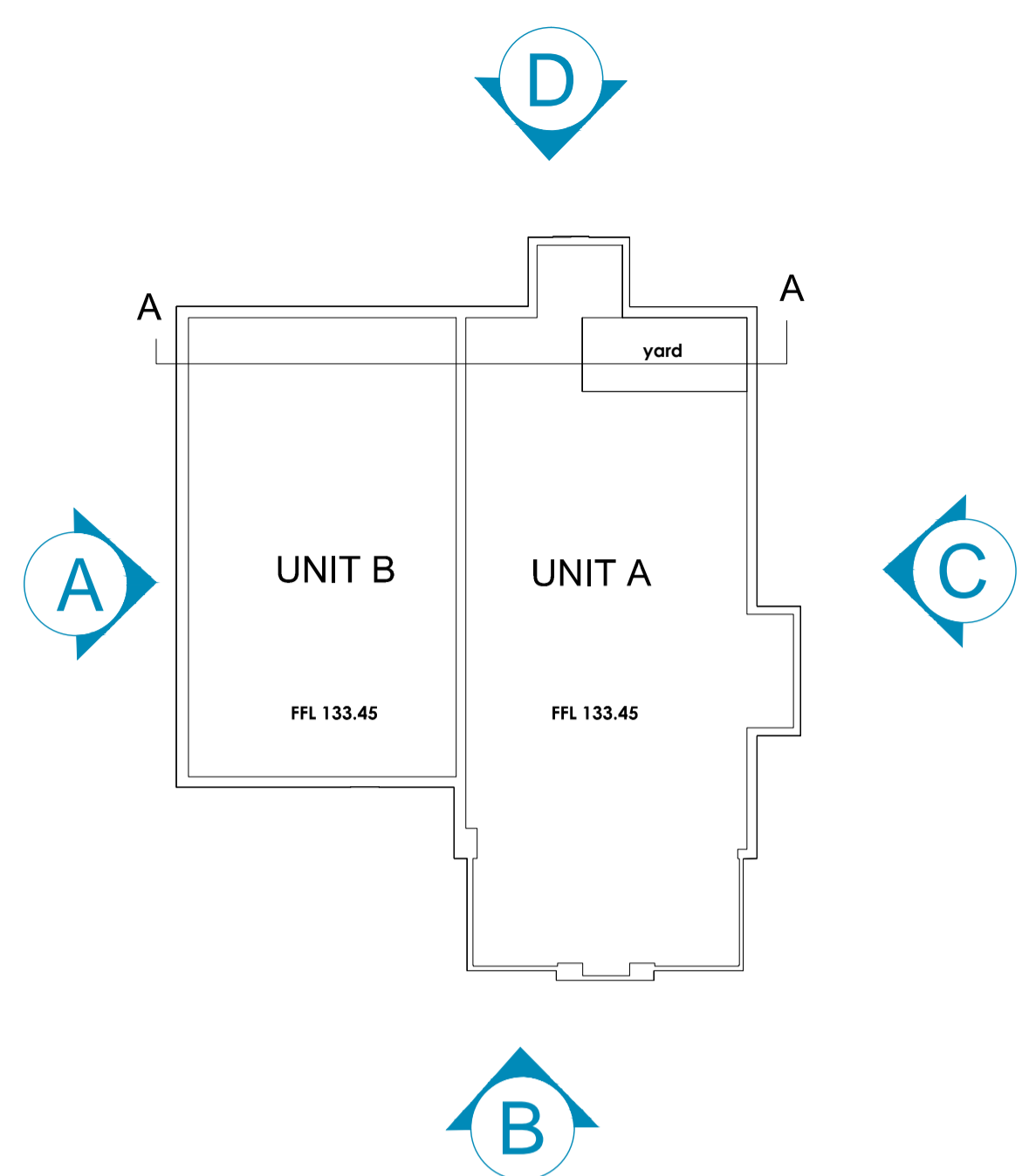
proposed side elevation C (DTW2)
scale 1:100 @A1



proposed rear elevation D (DTW1)
scale 1:100 @A1



proposed section aa thru plant
scale 1:100 @A1



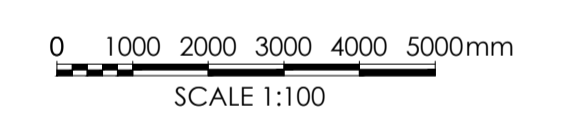
Elevation Key Plan
scale 1:250

EXTERNAL SIGNAGE SCHEDULE (n.t.s.)

| sign no. | signage image (n.t.s.) | description |
|----------|------------------------|---|
| 1. | | 1950mm high x 1950mm wide x 198mm deep. 2550mm between building FFL and sign's underside. Internally illuminated Colonel logo flex box fixed to 4500mm high (above FFL) x 3600 mm wide entrance portal construction. Portal internal 150x150mm mild steel supports clad with face panels folder and formed from 3mm aluminium powder coated red RAL 7022 umber grey - flex box colonels logo extruded aluminium sign comp system finished red RAL 3001 illumination provided by LED. Flex face substrate is to be decorated with face applied 3M self adhesive vinyl's to match corporate colours. LUMINANCE LEVEL = 225 CANDELA PER SQM |
| 2. | | OMITTED |
| 3. | | 2no 700mm cap height white with red highlight channels, internally illuminated individual 5mm moulded acrylic KFC letters 125mm deep. Ref. white R&H 7328 Translucent Acrylic Ref. cardinal red highlights 3M 3630-53 Ref edge return grey RAL 7022 / PMS 418 2No. @ 4100mm between building FFL and sign's underside Letters to be fixed back to building. Illumination by GE tetra mini max white LED's LUMINANCE LEVEL = 250 CANDELA PER SQM |
| 4. | | 1no 600mm cap height white with red highlight channels, internally illuminated individual 5mm moulded acrylic KFC letters 100mm deep. Ref. white R&H 7328 Translucent Acrylic Ref. cardinal red highlights 3M 3630-53 Ref edge return grey RAL 7022 / PMS 418 @ 2110mm between building FFL and sign's underside Letters to be fixed back to building. Illumination by GE tetra mini max white LED's LUMINANCE LEVEL = 250 CANDELA PER SQM |
| 5. | | 900mm high x 1580 mm wide applied individual aluminium graphic in black. 1125mm between building FFL and sign's underside. |
| 6. | | 900mm high x 1580 mm wide applied individual aluminium graphic in black. 1125mm between building FFL and sign's underside. |
| 7. | | 3000mm high x 2700 mm wide applied Colonel logo vinyl graphic deep red to match purple red colour RAL 3004 on red pantone colour ref: PMS187C (RAL 3001). 0mm between building FFL and sign's underside. |
| 8. | | 3400mm high (above pavement FFL) x 4000mm wide goal post height restriction to drive thru entrance (2500mm clear height), non-illuminated mid steel height restrictor frame all to be finished silver with red sign and white text detail. Red chains and hooks and red and white striped cross bar. |
| 9. | | 4no. 1200mm high (above pavement FFL), 400mm wide x 300mm high disabled parking sign manufactured from 3mm aluminium being primed & powder coated silver RAL 9006 having digitally printed vinyl with protective laminate applied to face. Sign affixed 076mm C.H.S. aluminium primed post, powder coated grey RAL 9006. |
| 10. | | 2no. 1500mm high (above pavement FFL), Ø450mm order bay sign manufactured from 3mm aluminium being primed and powder coated silver RAL 9006 having digitally printed vinyl with protective laminate applied to face. Sign affixed 076mm C.H.S. aluminium primed post, powder coated grey RAL 9006. |
| 11. | | 1no. 2303mm high (above pavement FFL) x 833mm wide x 275mm deep, 1 door, 2 panel order menu unit , aluminium supporting post and door frames finished in silver RAL 9006. Main aluminium signcase finishes in silver RAL 7031. LED internally illuminated. Frames to be glazed on 6mm clear acrylic panel backed up with 3mm opal 050 perspex panel with poster between. Luminance level = 250 Candela per sqm |
| 12. | | 2323mm high (above pavement FFL) x 2545mm wide x 275mm deep, 4 door, 8 panel main order menu unit , aluminium supporting post and door frames finished in silver RAL 9006. Main aluminium signcase finishes in silver RAL 7031. Illumination via LED. Frames to be glazed in 6mm clear acrylic panel backed up with 3mm opal 050 perspex panel with poster between. Luminance level = 250 Candela per sqm |
| 13. | | |
| 14. | | 1200mm high (above FFL) x 760mm wide x 260mm deep directional ground signs to be positioned in location shown. Signage size 500x700mm. Frame finished in silver. Sign panel to be non illuminated with reflective vinyls to face. NON ILLUMINATED |

EXTERNAL SIGNAGE SCHEDULE (n.t.s.)

| sign no. | signage image (n.t.s.) | description |
|----------|------------------------|--|
| 15. | | 1200mm high (above FFL) x 760mm wide x 260mm deep directional ground signs to be positioned in location shown. Signage size 500x700mm. Frame finished in silver. Sign panel to be non illuminated with reflective vinyls to face. NON ILLUMINATED |
| 16. | | |
| 17. | | Disclaimer sign , 600mm wide x 400mm high x 3mm thick aluminium panel, powder coated white with full colour digital print with protective laminate applied to face. Panel fixed to building in location shown, 1125mm from FFL |
| | | |



| Rev | Date | Description | Rev By | Chk'd By |
|-----|----------|---|--------|----------|
| E | 08/01/16 | General update to coincide with tender drawings | ARN | JMR |
| D | 18/11/15 | External signage schedule added | TC | JMR |
| C | 12/11/15 | Unit B doors and windows altered | TC | JMR |
| B | 04/11/15 | Annotations amended | TC | JAN |
| A | 21/10/15 | Revisions up in line with latest CA - SK 10 1 rev E (Reduced GIA - external client) | TC | JAN |

| | |
|--|--|
| Project title | PROPOSED DRIVE THRU UNIT GATEWAY 36, Deane Valley Parkway Barnsley |
| Client | Harworth Estates |
| Status | PLANNING - RESERVED MATTERS |
| Scale | 1:100 Drawing Size A1 |
| Drawn By | NBB Checked By JMR Date 09/15 |
| Drawing title | PROPOSED ELEVATIONS & SECTION |
| Job/Dwg No | 11462C-104 Rev E |
| <p>THE HARRIS PARTNERSHIP WAKEFIELD 231, Johns North, Wakefield, WF1 3QA T. 01924 291 800 F. 01924 290 072</p> <p>THE HARRIS PARTNERSHIP MANCHESTER 2nd Floor, Corners Warehouse, 77 Dale Street, Manchester, M1 2HG T. 0161 238 8555 F. 0161 244 5809</p> <p>THE HARRIS PARTNERSHIP MELTON KENNES The Old Rectory, 79 High Street Newport Pagnall, MK16 1JL T. 01908 211 577 F. 01908 211 722</p> <p>THE HARRIS PARTNERSHIP READING 101 London Road, Reading, RG1 58Y T. 0118 950 7700 F. 0118 956 8442</p> | |

