

# LANDSCAPE STATEMENT

## SUPPLEMENTARY INFORMATION

JULY 2013

Version 1 | 12 07 2013

## Design Philosophy

The intention is to provide a vibrant new development that is visible but attractive and respects its location in the green belt.

It will form an extension to Grimethorpe providing suitable accommodation to exploit the advantages the location has to access surrounding towns and cities.

To achieve this the layout indicated includes the following considerations:

- There are a series of definitive areas providing identity to the area. Identifiable urban forms have been suggested (courts, mews and streets) and the aggregation of units of different sizes across the site used to reinforce the identity of the areas.
- Retention of tree groups where possible.
- New trees have been suggested to reinforce routes across the development.
- An appropriate density of development.
- An appropriate mixture of unit type and sizes.
- Green links have been formed linking the adjacent housing and countryside.
- The existing topography of the site has been used to reduce visual impact.
- A buffer zone has been indicated that reduces further the impact of development from the north

### Key to Photographs

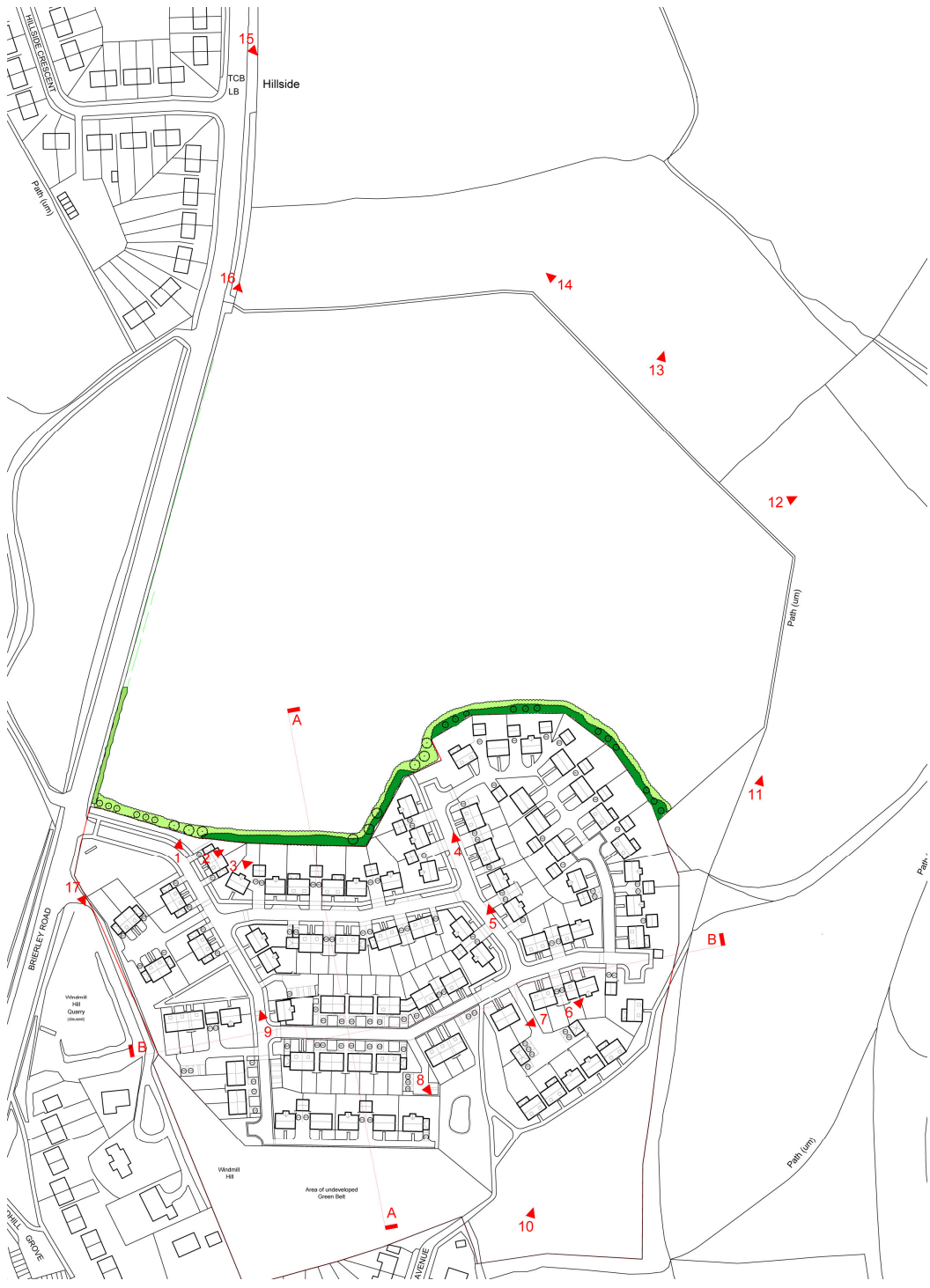




Photo 1

Looking north to Brierley Road. Indicating the banking to the northern boundary where the landscape buffer zone will be.



Photo 2

Looking north east. Indicating the banking to the northern boundary where the landscape buffer zone will be, with a view on the existing tree group—2 existing weeping willows. This will for a feature in the buffer zone providing distant views across the playing fields to Brierley.



Photo 3

Looking north east. Indicating the banking to the northern boundary where the landscape buffer zone will be, with a view on the existing tree group—2 existing weeping willows.



Photo 4

Looking north to Brierley and the 2 weeping willows. Indicating the banking to the northern boundary where the landscape buffer zone will be.



Photo 5

Looking north to Brierley and the two weeping willows from the middle of the site. Indicating the banking to the northern boundary where the landscape buffer zone will be.



Photo 6

Looking east across the Valley to Tom Bank Wood. Indicating the existing tree group to the east of the development.



Photo 7

Looking west across the site. Indicating the existing tree group that will form part of the green route to Grimethorpe.



Photo 8

Looking south to Grimethorpe. Showing the location of the proposed green route to Grimethorpe.



Photo 9

Looking north to Brierley. Showing the entrance to the site and location of the green buffer zone.



**Photo 10**  
Looking from the south if the site from the public open space.



**Photo 11**  
Looking north from the northern boundary of the site. View on to Tom Bank Wood.



**Photo 12**  
Looking north from the northern boundary of the site towards Brierley. Indicating the valley to Tom Bank Wood



**Photo 13**  
Looking north from the northern boundary of the site towards Brierley.



**Photo 14**  
Looking from Brierley towards the proposed development. The landscape buffer and drop in level will reduce the development impact and soften the boundary to the green belt.



**Photo 15**  
Looking from Brierley towards the proposed development—closer than 14. The previous school buildings can be seen. The proposal have a lesser impact due to the scale and the mitigation of the landscape buffer and use of existing levels.



**Photo 16**

Looking from Brierley Road at the site entrance towards Windmill Hill. Indicates the nature visual barrier formed by the levels and off site trees and bushes.

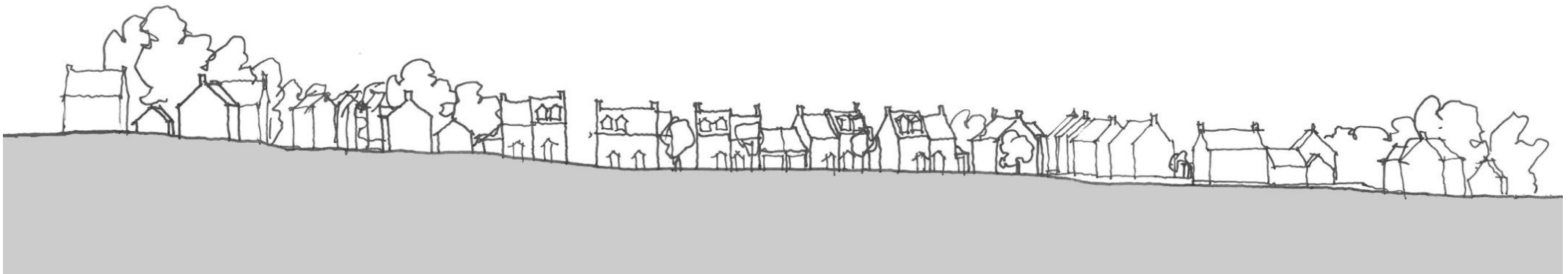
**Section AA and BB below**

Section AA showing how the proposed development is in a recess formed by the existing levels. The northern edge of development is within a rise in level to the existing playing fields and is the location of the landscape buffer.

Section BB shows how the site falls from west to east from Windmill Hill to the east boundary. This fall continues to Tom Bank Wood.



Section AA



Section BB



View from the north indicating the landscape buffer



Distant view form the north indicating the landscape buffer



View from the west showing courts, streets and the open land to the south



View from the south showing the proposed green link to Grimethorpe across the site to the open land to the north