

Tree Schedule										
NO	TREE SPECIES Common Name	TREE SPECIES Scientific Name	HEIGHT m	SPREAD m	DIA mm	N	CAT.	Life Stage	Life exp yrs	NOTES
T1	Silver Birch	Betula pendula	8	6	200		C2	Early-Mature	40+	Some dead wood
T2	Oak	Quercus robur	10	10	250		C2	Early-Mature	40+	
T3	Silver Birch	Betula pendula	10	7	300		C2	Mature	40+	
T4	Silver Birch	Betula pendula	8	5	150		C2	Early-Mature	40+	Previous pruning work Some dead wood, timber supports nailed either side to trunk
T5	Silver Birch	Betula pendula	8	5	150		C2	Early-Mature	40+	
T6	Silver Birch	Betula pendula	11	10	500		C1	Mature	40+	
H7	Leyland cypress, Common Privet, Hawthorn	Cupressus x leylandii, Ligustrum ovatifolium, Crataegus monogyna	1-2	2			C3	Early-Mature	40+	
T8	Oak	Quercus robur	12	12	750		C1	Mature	40+	Previous pruning work, ivy covered stem
T9	Hawthorn	Craetagus monogyna	3	3	164	N	C3	Mature	40+	Multi-stem, birds nest in canopy
T10	Elm	Ulmus sp.	3	3	150		C3	Semi-Mature	20-40	Previous pruning work
T11	Silver Birch	Betula pendula	7	6	250		C2	Mature	40+	Previous pruning work
T12	Elm	Ulmus sp.	8	10	300		C2	Mature	20-40	Previous pruning work, some dead wood
G13	Hawthorn	Craetgus monogyna	6		300-150		C2	Mature	40+	Previous pruning work
G14	Hawthorn	Craetgus monogyna	6		150		C2	Mature	40+	Previous pruning work, ivy covered stem
T15	Oak	Quercus robur	7	6	200		C2	Semi-Mature	40+	Previous pruning work
H16	Hawthorn, Elder, Holly	Craetagus monogyna, Sambucus nigra, Ilex aquifolium	4-5	5			C2	Mature	40+	Previous pruning work
WB17	Birch, Oak, Hawthorn, Holly	Betula pendula, Quercus robur, Crataegus monogyna, Ilex aquifolium			600-150		C2	Young - Early Mature	40+	Locally managed, with some wildlife enhancements
T18	Hawthorn	Crataegus monogyna	7	5	212		C2	Mature	40+	Twin-stem

Tree Survey to BS5837:2012

KEY

COLOUR

QUALITY

DESCRIPTION

GREEN

A: HIGH

Vigorous healthy good form, visually important, historic or rare

BLUE

B: MODERATE

Slightly impaired condition, numerous immature, 'A' potential

GREY

C: LOW

Adequate condition requiring minimal surgery

RED

U: FELL

Dead dying, dangerous insecure rooting, significant fungal disease

GREEN

SHRUBS

SUB-CATEGORY:

1 ARBORICULTURAL

2 LANDSCAPE

3 CULTURAL/CONSERVATION

Site Boundary

In accordance with BS5837:2012 'Trees in relation to design, demolition and construction', offsite trees within a distance equal to 12x stem diameter from boundary should be surveyed. In accordance with good working practice, all trees within 12m of the site boundary have been surveyed.

The original of this drawing is produced in colour - a monochrome copy should not be relied upon.

LIMITATION OF THIS SURVEY
This survey records amenity quality and desirability of tree retention in relation to proposed construction by visual inspection from ground level where accessible.

It does not constitute a Tree Inspection or detailed report on condition.

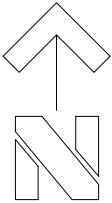
Tree heights and spread approximate. The diameter of single stem trees is taken at 1.5m above ground level. For the diameter of multistemmed trees, each multistem is measured at 1.5m above ground level and calculated to give a notional diameter as if all multistems were fused into one stem.

The branch spread is an accurate representation of the crown as clause 4.4.2.5 (e)

Tree inspections should take place annually in September/October when trees are in leaf.

Tree positions are based on topographic survey drawing number S10775 produced by Haycock and Todd dated February S10775

REVISION:
A. H16 amended on plan, species added to H16 mix on schedule. JM 25-02-2025



FOR PLANNING

WEDDLES

MAIL@WEDDLES.CO.UK
WEDDLES.CO.UK
0114 250 1181
UNIT 4 WESTBROOK COURT
SHEFFIELD, S11 8YZ

LANDSCAPE
ARBORICULTURE
GARDEN DESIGN
ECOLOGY

Job
BEN BANK ROAD, SILKSTONE COMMON

Title
TREE SURVEY

scale@A3
1:250

drawn
JM

date
JAN 25

drawing number
1926-001

revision
A