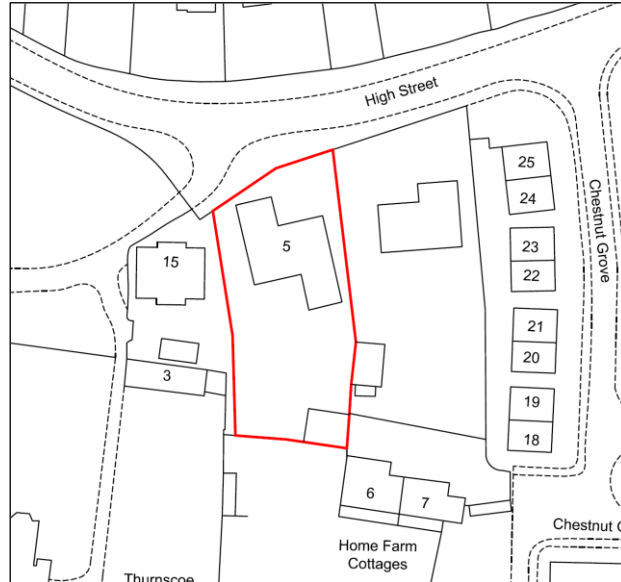


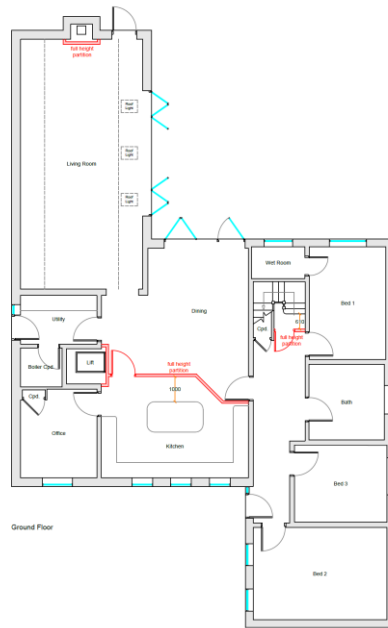
**Planning and Design & Access Statement**  
**CHANGE OF USE FROM DWELLING TO CHILDREN'S CARE HOME**  
**5 HIGH ST. THURNSCOE S63 0ST**



**The Site:** The application involves a large detached located on the south side of High Street, Thurnscoe. Recently extended it has four bedrooms and is set in a large garden plot. There are two accesses from High Street with gates set back behind visibility splays as shown on the streetview image below. Properties either side are also detached houses in large plots.



**Proposal & Design Matters:** The proposal is to change the use from a single dwelling to a small children's care home, registered by Ofsted. Some internal alterations will be necessary and these are shown on the submitted floor plan, but there will be no external works.



The proposed change will allow the property to serve as a specialized home for a 15-year-old male who is severely autistic. This home will provide a stable, supportive, and nurturing environment, tailored to meet the unique needs of the young individual.

The child in question requires round-the-clock care, and as such, will be always supported by a dedicated team of four professional carers. The conversion of the property into a children’s home has been carefully considered by the child’s family and registered care providers, who view this location as the young man’s long-term, permanent residence. The intention is to create a safe and secure living environment that aligns with his specific needs, ensuring his well-being and development in a familiar and supportive setting. This change of use will not only benefit the child but also contribute positively to the community by providing specialized care in a residential setting.

**Access & Car Parking:** There is ample parking – up to 6 cars can be accommodated- served off two accesses. The four members of staff on site will often car share for shifts. It is anticipated there will be one visit a week from a social worker and potentially a visitor from Ofsted every so often.

This proposal will be a good use of resources and will meet one of the housing challenges identified in the Local Plan, namely ‘meeting the accommodation needs of children and vulnerable adults.’