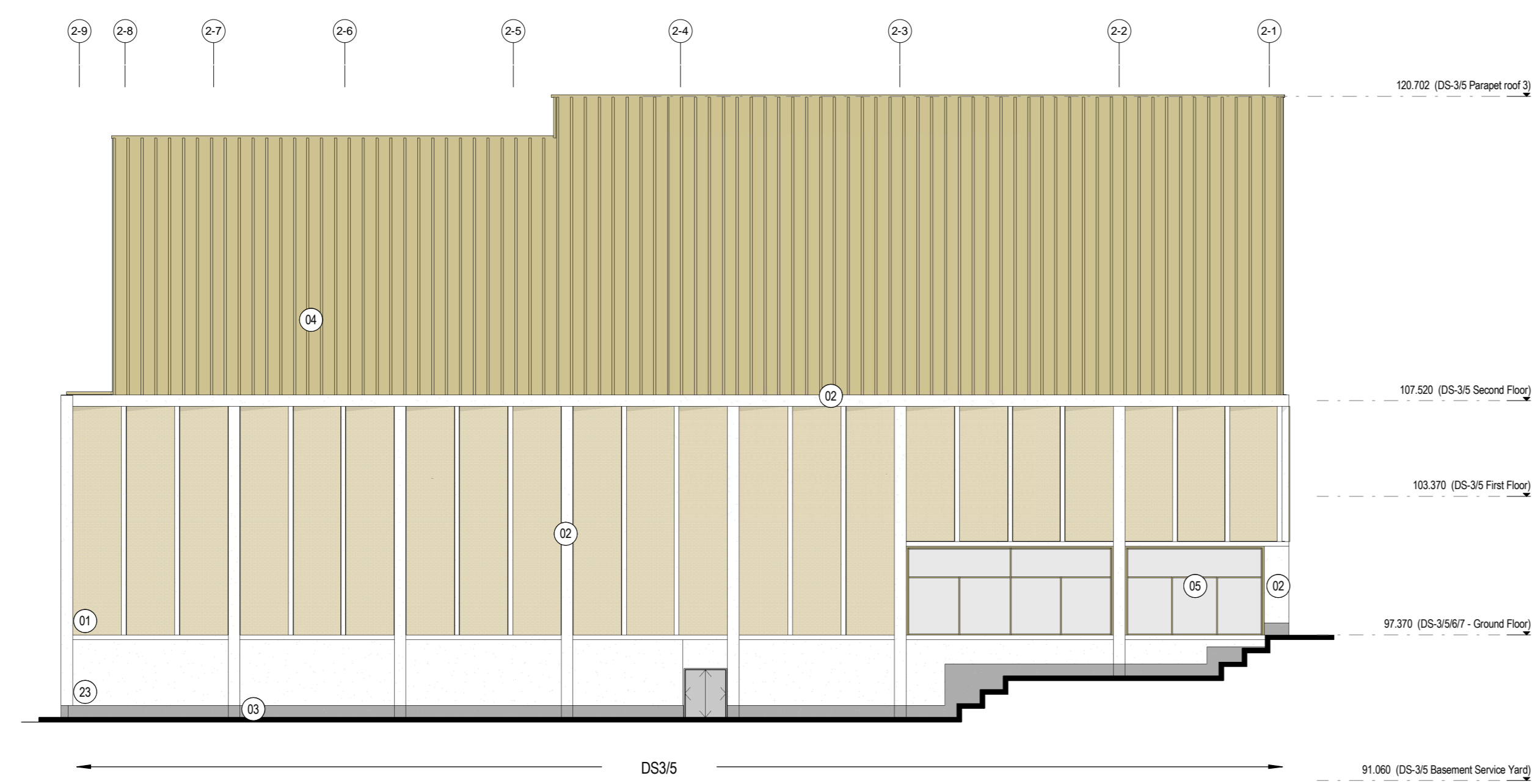
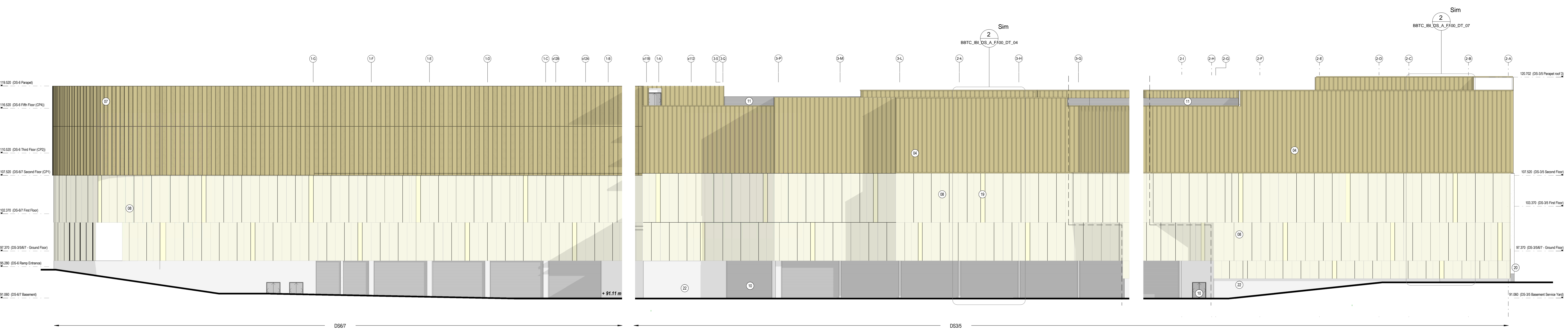


**2** Elevation 2 - West Elevation  
1 : 200

**1** Elevation 1 - West Elevation  
1 : 200



**3** Elevation 3 - North Elevation  
1 : 200



**6** Elevation 6 - North East Elevation (DS 6/7)  
1 : 200

**5** Elevation 5 - North East Elevation (DS 3/5)  
1 : 200

**4** Elevation 4 - East Elevation  
1 : 200

Notes:

- This drawing is copyright.
- Do not scale dimensions from the drawing.
- This drawing is to be read in conjunction with all other relevant drawings.
- All dimensions on this drawing are to be reported to the architect.
- Do not modify any element of this drawing.
- This drawing only for approved issues.

North Sign: Key Plan

1:200 Scale

The following external noise files are included within this drawing:

Ref	Description	Keynote
01	Built brick slips on metal carrier system. Secured to SFS and structure. Fixing brackets and insulated Tophat rails fixed to SFS framework (not sheathing board) to cladding manufacturers design.	EW/C1
02	GRC column and beam boings to achieve high quality 'Portland Stone' effect.	EW/C3
03	GRC column base detail to achieve high quality 'Portland Stone' effect.	EW/C3
04	Profiled insulated aluminium rainscreen on SFScladding rails.	EW/C2
05	Anodised curtain walling screens.	EG/1
07	Anodised Aluminium perforated cladding panels, glazed into Curtain Walling system to car park Elevations. Detailed perforation pattern to be confirmed.	EW/C7
08	Metal rainscreen panels.	EW/C4
10	Powder coated aluminium external door/shutter shutters.	EW/C8
11	Powder coated aluminium louvre screens to plant areas.	EW/C8
13	Fully adhered single ply membrane/cold liquid applied waterproofing warm roof system, on dual layer acoustic mineral wool insulation system. Insulation and acoustic membrane thickness to provide target U-Value and sound reduction. Roof drainage falls (min 1:60) to be achieved by variable gully heights.	RT/1
14	Glazed canopy on feature steel sections.	
15	Polyester powder coated aluminium coping system.	EW/C10
16	Polyester powder coated aluminium insulated flashing.	EW/C11
17	Suspended internal signage.	
18	Flat soffit metal panel system.	EW/C9
19	Translucent illuminated panels within cladding system.	EW/C5
20	Powder coated steel security gate/financing.	
21	Structural floor with waterproofing.	FT/3
22	Concrete (Cast in situ).	
23	GRC panels to achieve high quality 'Portland Stone' effect.	
24	Profiled metal decking with in situ concrete, polymer modified polyester reinforced blumen roofing membranes, rounded pebbles paving slabs.	

Rev	Date	Revision Notes	Drawn	Revised
6	02/04/17	Planning Issue	EA	SL
5	06/03/17	Crema H.O.T. Issue	EA	SL
4	08/02/17	Stage 3 pricing Issue	EA	SL
3	17/01/17	Stage 3 Issue	SCA	EA
2	19/09/16	Stage 2 Issue - General Update	EA	SL
1	26/07/16	Stage 2 Issue	AC	SL

Drawn: Turner & Townsend