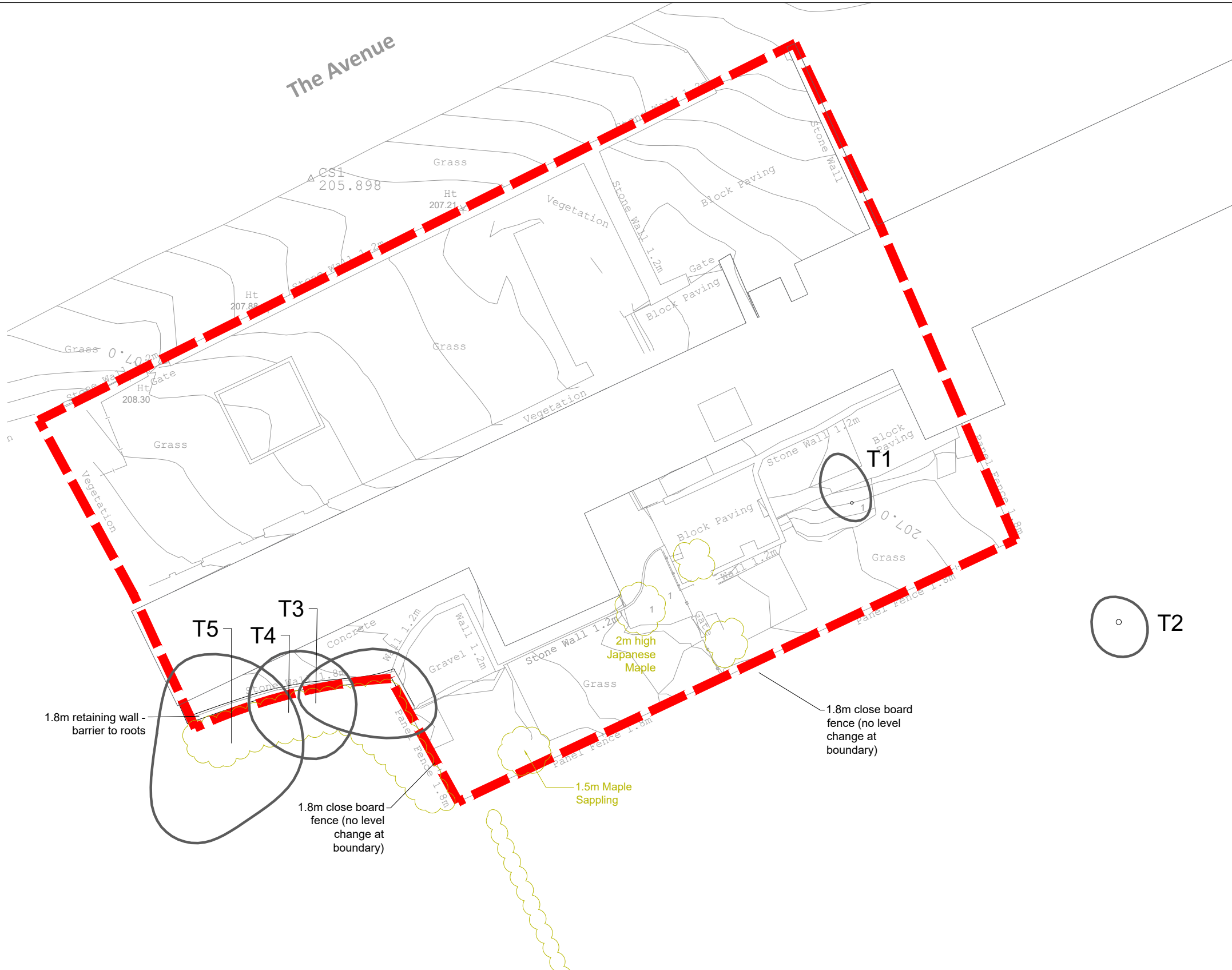


The Avenue



TREE SURVEY TO BS5837:2012

| COLOUR | QUALITY                                    | DESCRIPTION  |
|--------|--|--|
| GREEN  | <b>A: HIGH</b><br>retention most desirable | Vigorous healthy good form, visually important, historic or rare   |
| BLUE   | <b>B: MODERATE</b><br>retention desirable  | Slightly impaired condition, numerous immature, 'A' potential      |
| GREY   | <b>C: LOW</b><br>could be retained         | Adequate condition requiring minimal surgery                       |
| RED    | <b>U: FELL</b><br>Unsuitable for retention | Dead dying, dangerous insecure rooting, significant fungal disease |
| GREEN  | <b>SHRUBS</b>                              |  |

- SUB-CATEGORY:**
- 1 ARBORICULTURAL
  - 2 LANDSCAPE
  - 3 CULTURAL/CONSERVATION

--- Site Boundary

In accordance with BS5837:2012 'Trees in relation to design, demolition and construction', offsite trees within a distance equal to 12x stem diameter from boundary should be surveyed. In accordance with good working practice, all trees within 12m of the site boundary have been surveyed.

The original of this drawing is produced in colour - a monochrome copy should not be relied upon.

**LIMITATION OF THIS SURVEY**  
This survey records amenity quality and desirability of tree retention in relation to proposed construction by visual inspection from ground level where accessible.

It does not constitute a Tree Inspection or detailed report on condition.

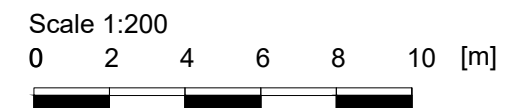
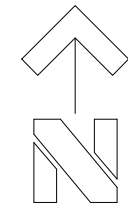
Tree heights and spread approximate. The diameter of single stem trees is taken at 1.5m above ground level. For the diameter of multistemmed trees, each multistem is measured at 1.5m above ground level and calculated to give a notional diameter as if all multistems were fused into one stem.

The branch spread is an accurate representation of the crown as clause 4.4.2.5 (e)

Tree inspections should take place annually in September/October when trees are in leaf.

Tree positions are based on topographic survey drawing number 23246-23-01 produced by Castle Surveys LTD dated 21-04-2023

| NO | TREE SPECIES<br>Common Name | TREE SPECIES<br>Scientific Name | HEIGHT<br>m | SPREAD<br>m | Clear<br>stem (m) | DIA<br>mm | N | CAT. | Life<br>Stage | Life<br>exp yrs | NOTES  |
|----|-----------------------------|---------------------------------|-------------|-------------|-------------------|-----------|---|------|---------------|-----------------|--|
| T1 | Plum                        | Prunus domestica                | 3           | 3           | 0.5               | 120       | N | C2   | Early-Mature  | 40              | Multistemmed   |
| T2 | Pear                        | Pyrus communis                  | 5           | 4           | 0.5               | 250       | N | C2   | Semi-Mature   | 40              | Previous pruning work, Part of Avenue, Multistemmed  |
| T3 | Willow-leaf Cotoneaster     | Cotoneaster salicifolius        | 4           | 4           | 0.5               | 120       | N | C2   | Early-Mature  | 20              | Multistemmed, Canopy to East                         |
| T4 | Willow-leaf Cotoneaster     | Cotoneaster salicifolius        | 5           | 4           | -                 | 200       | N | C2   | Semi-Mature   | 20              | Multistemmed   |
| T5 | Verigated Holly             | Ilex aquifolium                 | 8           | 8           | -                 | 280       |   | C2   | Semi-Mature   | 40              | Ivy covered stems, Twin, Minor previous pruning work |



**WEDDLES**  
 MAIL@WEDDLES.CO.UK LANDSCAPE  
 WEDDLES.CO.UK ARBORICULTURE  
 0114 250 1181 GARDEN DESIGN  
 UNIT 4 WESTBROOK COURT SHEFFIELD, S11 8YZ ECOLOGY

Job CHIMNEY COTTAGE, WORTLEY

Title TREE SURVEY

|                   |             |                |                            |               |
|-------------------|-------------|----------------|----------------------------|---------------|
| scale@A3<br>1:200 | drawn<br>IG | date<br>JAN 24 | drawing number<br>1682-001 | revision<br>- |
|-------------------|-------------|----------------|----------------------------|---------------|