

[illegible]

NOTE:
Signage Contractor to survey existing pole sign & existing height prior to Works commencing on site.

SITE PLAN
1:250

POLE SIGN / TOTEM SIGN FRONT & SIDE ELEVATION
1:20

POLE SIGN / TOTEM SIGN PLAN
1:20

GENERAL NOTES:

- All works are to be undertaken in accordance with the Building Regulations and the latest British Standards.
- All proprietary materials and products are to be used strictly in accordance with the manufacturers recommendations.
- All dimensions to be checked on site prior to construction.

PROPOSED DEVELOPMENT AT
Wombwell Lane, Stairfoot
Barnsley S70 3NT

DRAWING TITLE:
Proposed Site Signage
POLE SIGN / TOTEM SIGN

ON BEHALF OF:
McDonald's Restaurants Ltd

DRAWING No:
P21-050-0970-23

STORE No:
0970

DATE:
03-06-2024

SCALE & PAPER SIZE:
1:20@A1

REVISIONS:

REV	DATE	DESCRIPTION	BY	CHECKED
A	03-06-24	First Issue	LF	PF

McDonald's Logo

Architects:
CJ Architects Ltd
PM House,
Riverside Industrial Estate,
Peasmarsh, Surrey
GU8 1LZ

NOTE:
Signage Contractor to survey existing pole sign & existing height prior to Works commencing on site.

SITE PLAN
1:250

POLE SIGN / TOTEM SIGN FRONT & SIDE ELEVATION
1:20

POLE SIGN / TOTEM SIGN PLAN
1:20

GENERAL NOTES:

- All works are to be undertaken in accordance with the Building Regulations and the latest British Standards.
- All proprietary materials and products are to be used strictly in accordance with the manufacturers recommendations.
- All dimensions to be checked on site prior to construction.

PROPOSED DEVELOPMENT AT
Wombwell Lane, Stairfoot
Barnsley S70 3NT

DRAWING TITLE:
Proposed Site Signage
POLE SIGN / TOTEM SIGN

ON BEHALF OF:
McDonald's Restaurants Ltd

DRAWING No:
P21-050-0970-23

STORE No:
0970

DATE:
03-06-2024

SCALE & PAPER SIZE:
1:20@A1

REVISIONS:

REV	DATE	DESCRIPTION	BY	CHECKED
A	03-06-24	First Issue	LF	PF

McDonald's Logo

Architects:
CJ Architects Ltd
PM House,
Riverside Industrial Estate,
Peasmarsh, Surrey
GU8 1LZ

Material Specifications:

- Composite Aluminium "RENOBOND" 4mm AKZO NOBEL DULUX 90YY 07/93 DARK GREEN. With Fret-Cut & backed up logo in yellow Polycarbonate.
- Composite Aluminium "RENOBOND" 4mm REF REYNOWOOD. With Fret-Cut & backed up Display.
- Composite Aluminium "RENOBOND" 4mm AKZO NOBEL DULUX 90YY 07/93 DARK GREEN. With Fret-Cut & backed up logo in yellow Polycarbonate.
- Composite Aluminium "RENOBOND" 4mm REF REYNOWOOD.
- Composite Aluminium "RENOBOND" 4mm RAL 7022.
- Steel Base painted RAL 7022 Dark Grey.
- Steel Sheet painted AKZO NOBEL DULUX 90YY 07/93 DARK GREEN.
- Steel Sheet painted RAL: DARK GREY.
- Composite Aluminium "REYOBOOND" 4mm REF: REYNOWOOD.

Dimensions:

- Pole Sign Height: 8000mm
- Top Panel Width: 1000mm
- Top Panel Height: 1000mm
- Middle Panel Height: 750mm
- Bottom Panel Height: 500mm
- Side Panel Width: 350mm

1 2 3 4 5 6 7 8 9 10 11 12 13 14 15 16

A

B

C

D

E

F

G

H

0 2.5m 5m 7.5m 10m

1 2 3 4 5 6 7 8 9 10 11 12 13 14 15 16

NOTE:
Signage Contractor to survey
existing pole sign & existing height
prior to Works commencing on site.

POLE SIGN LOCATION

TRANS PENNINE TRAIL

START

START STAY

STOP

STOP STAY

KEEP CLEAR

PARKING

DRIVE THRU

A633

1000

1000

8000

750

500

350

8000

Composite Aluminium
"RENOBOND" 4mm AKZO NOBEL
DULUX 90YY 07/93 DARK GREEN.
With Fret-Cut & backed up logo in
yellow Polycarbonate.

Composite Aluminium
"RENOBOND" 4mm REF
REYNOWOOD.
With Fret-Cut & backed up Display.

Composite Aluminium
"RENOBOND" 4mm AKZO NOBEL
DULUX 90YY 07/93 DARK GREEN.
With Fret-Cut & backed up logo in
yellow Polycarbonate.

Composite Aluminium
"RENOBOND" 4mm REF
REYNOWOOD.

Composite Aluminium
"RENOBOND" 4mm REF
REYNOWOOD.

Steel Base painted
RAL 7022 Dark Grey

Side in Composite Aluminium
"RENOBOND" 4mm RAL 7022.

POLE SIGN / TOTEM SIGN FRONT & SIDE ELEVATION
1:20

Steel Sheet painted AKZO
NOBEL DULUX 90YY 07/93
DARK GREEN

Steel Sheet painted
RAL: DARK GREY

Composite Aluminium
"REYOBOND" 4mm REF:
REYNOWOOD

POLE SIGN / TOTEM SIGN PLAN
1:20

03-06-24 First Issue

REV. DATE: DRAWING REVISIONS. BY: CHECKED:

This drawing has been reviewed and signed off by McDonald's Restaurants Ltd any errors, changes or discrepancies should be reported to the McDonald's project manager and designers prior to commencing work on site

Name (PM): Date:

Signature:

GENERAL NOTES:
All works are to be undertaken in accordance with the Building Regulations and the latest British Standards.
All proprietary materials and products are to be used strictly in accordance with the manufacturers recommendations.
All dimensions to be checked on site prior to construction.

PROPOSED DEVELOPMENT AT STORE No.:

Wombwell Lane, Stairfoot 0970

Barnsley S70 3NT

ON BEHALF OF:

McDonald's Restaurants Ltd

DRAWING TITLE:

Proposed Site Signage
POLE SIGN / TOTEM SIGN

DRAWN BY: CHECKED BY: DRAWING No: REV No:

LF PF P21-050-0970-23 A

SCALE & PAPER SIZE: 1:20@A1 DATE: 03-06-2024

07 Architects Ltd
PM House,
Riverside Industrial Estate,
Ruscombe, Surrey
GU11 1LZ

McDonald's

NOTE:
Signage Contractor to survey existing pole sign & existing height prior to Works commencing on site.

SITE PLAN
1:250

POLE SIGN / TOTEM SIGN FRONT & SIDE ELEVATION
1:20

POLE SIGN / TOTEM SIGN PLAN
1:20

GENERAL NOTES:

- All works are to be undertaken in accordance with the Building Regulations and the latest British Standards.
- All proprietary materials and products are to be used strictly in accordance with the manufacturers recommendations.
- All dimensions to be checked on site prior to construction.

PROPOSED DEVELOPMENT AT
Wombwell Lane, Stairfoot
Barnsley S70 3NT

DRAWING TITLE:
Proposed Site Signage
POLE SIGN / TOTEM SIGN

ON BEHALF OF:
McDonald's Restaurants Ltd

DRAWING No:
P21-050-0970-23

STORE No:
0970

DATE:
03-06-2024

SCALE & PAPER SIZE:
1:20@A1

REV:
LF

CHECKED BY:
PF

DATE:
03-06-2024

REVISIONS:
A

McDonald's Logo

Architects:
CJ Architects Ltd
PM House,
Riverside Industrial Estate,
Peasmarsh, Surrey
GU8 1LZ

1 2 3 4 5 6 7 8 9 10 11 12 13 14 15 16

A

B

C

D

E

F

G

H

0 2.5m 5m 7.5m 10m

1 2 3 4 5 6 7 8 9 10 11 12 13 14 15 16

NOTE:
Signage Contractor to survey
existing pole sign & existing height
prior to Works commencing on site.

POLE SIGN LOCATION

TRANS PENNINE TRAIL

START

START STAY

STOP

STOP

KEEP CLEAR

A633

1 2 3 4 5 6 7 8 9 10 11 12 13 14 15 16

1 2 3 4 5 6 7 8 9 10 11 12 13 14 15 16

POLE SIGN / TOTEM SIGN FRONT & SIDE ELEVATION
1:20

POLE SIGN / TOTEM SIGN PLAN
1:20

Steel Sheet painted AKZO NOBEL DULUX 90YY 07/93 DARK GREEN

Steel Sheet painted RAL: DARK GREY

Composite Aluminium "REYOBOND" 4mm REF: REYNOWOOD

Steel Base painted RAL 7022 Dark Grey

Composite Aluminium "RENOBOND" 4mm AKZO NOBEL DULUX 90YY 07/93 DARK GREEN. With Fret-Cut & backed up logo in yellow Polycarbonate.

Composite Aluminium "RENOBOND" 4mm REF: REYNOWOOD. With Fret-Cut & backed up Display.

Composite Aluminium "RENOBOND" 4mm AKZO NOBEL DULUX 90YY 07/93 DARK GREEN. With Fret-Cut & backed up logo in yellow Polycarbonate.

Side in Composite Aluminium "RENOBOND" 4mm RAL 7022.

03-06-24 First Issue

REV. DATE. DRAWING REVISIONS. BY. CHECKED

This drawing has been reviewed and signed off by McDonald's Restaurants Ltd any errors, changes or discrepancies should be reported to the McDonald's project manager and designers prior to commencing work on site

Name (PM): Date:

Signature:

GENERAL NOTES:
All works are to be undertaken in accordance with the Building Regulations and the latest British Standards.
All proprietary materials and products are to be used strictly in accordance with the manufacturers recommendations.
All dimensions to be checked on site prior to construction.

PROPOSED DEVELOPMENT AT

Wombwell Lane, Stairfoot
Barnsley S70 3NT

STORE No. 0970

ON BEHALF OF:

McDonald's Restaurants Ltd

DRAWING TITLE:

Proposed Site Signage
POLE SIGN / TOTEM SIGN

DRAWN BY: LF

CHECKED BY: PF

DRAWING No: P21-050-0970-23

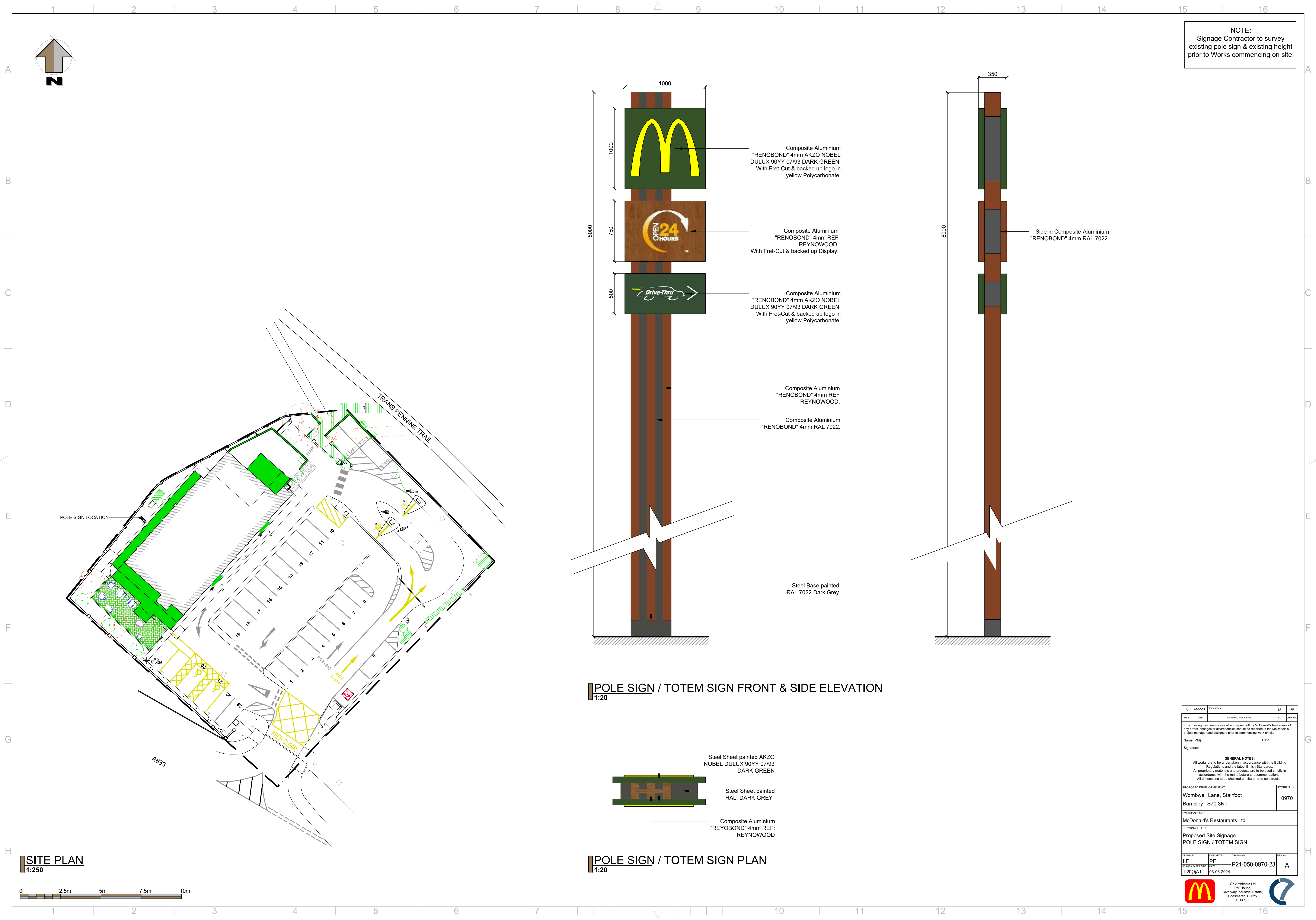
REV No: A

SCALE & PAPER SIZE: 1:20@A1

DATE: 03-06-2024

07 Architects Ltd
PM House,
Riverside Industrial Estate,
Ruscombe, Surrey
GU11 1LZ

McDonald's



NOTE:
Signage Contractor to survey existing pole sign & existing height prior to Works commencing on site.

SITE PLAN
1:250

POLE SIGN / TOTEM SIGN FRONT & SIDE ELEVATION
1:20

POLE SIGN / TOTEM SIGN PLAN
1:20

GENERAL NOTES:

- All works are to be undertaken in accordance with the Building Regulations and the latest British Standards.
- All proprietary materials and products are to be used strictly in accordance with the manufacturers recommendations.
- All dimensions to be checked on site prior to construction.

PROPOSED DEVELOPMENT AT
Wombwell Lane, Stairfoot
Barnsley S70 3NT

DRAWING TITLE:
Proposed Site Signage
POLE SIGN / TOTEM SIGN

ON BEHALF OF:
McDonald's Restaurants Ltd

DRAWING No:
P21-050-0970-23

STORE No:
0970

DATE:
03-06-2024

SCALE & PAPER SIZE:
1:20@A1

REVISIONS:

REV	DATE	DESCRIPTION	BY	CHECKED
A	03-06-24	First Issue	LF	PF

McDonald's Logo

C7 Architects Ltd
PM House,
Riverside Industrial Estate,
Peasmarsh, Surrey
GU8 1LZ

NOTE:
Signage Contractor to survey existing pole sign & existing height prior to Works commencing on site.

SITE PLAN
1:250

POLE SIGN / TOTEM SIGN FRONT & SIDE ELEVATION
1:20

POLE SIGN / TOTEM SIGN PLAN
1:20

GENERAL NOTES:

- All works are to be undertaken in accordance with the Building Regulations and the latest British Standards.
- All proprietary materials and products are to be used strictly in accordance with the manufacturers recommendations.
- All dimensions to be checked on site prior to construction.

PROPOSED DEVELOPMENT AT
Wombwell Lane, Stairfoot
Barnsley S70 3NT

DRAWING TITLE:
Proposed Site Signage
POLE SIGN / TOTEM SIGN

ON BEHALF OF:
McDonald's Restaurants Ltd

DATE:
03-06-2024

SCALE & PAPER SIZE:
1:20@A1

STORE No.:
0970

REV No.:
A

McDonald's Logo

C7 Architects Ltd
PM House,
Riverside Industrial Estate,
Parsloes, Surrey
GU8 1LZ

