

Planning Sheet Notes:

Type and style of roof tiles and facing materials including external features such as canopies, cills, heads, fascia, windows and doors as site specification and to Local Authority Approval. SHOWN INDICATIVE ONLY ON THIS PLAN



Front Elevation.

1 : 100



Left Elevation.

1 : 100

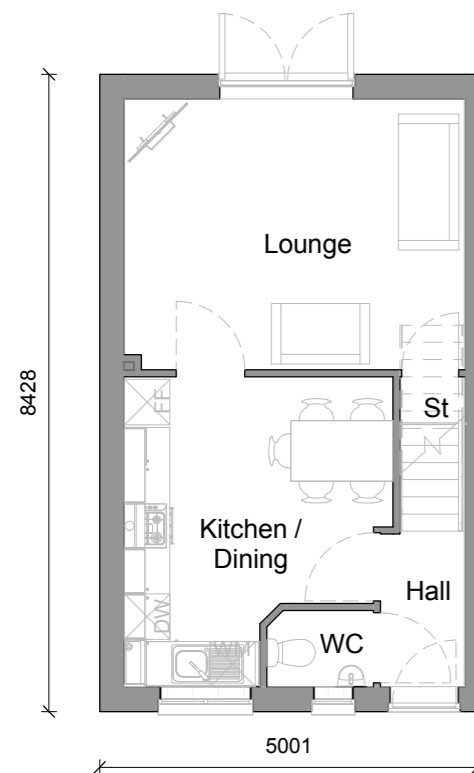


Rear Elevation.

1 : 100

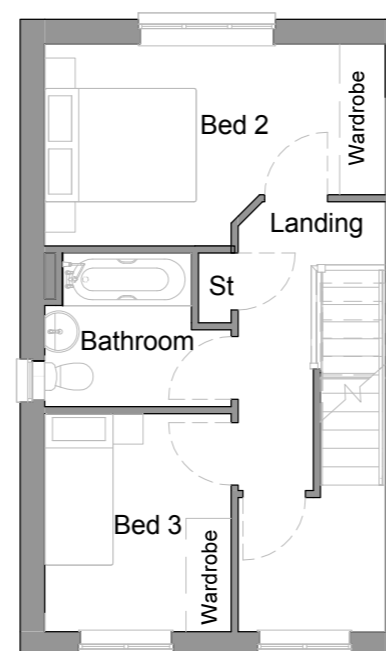
Area Schedule - Sales		
Name	Area	Area Sq Ft
Ground Floor GIA	34.97 m ²	376.38 SF
First Floor GIA	34.97 m ²	376.38 SF
Second Floor GIA	23.39 m ²	251.77 SF
	93.32 m ²	1004.52 SF

Area Schedule - Build		
Name	Area	Area Sq Ft
Ground Floor Build	35.58 m ²	383.01 SF
First Floor Build	35.58 m ²	383.01 SF
Second Floor Build	26.51 m ²	285.39 SF
	97.68 m ²	1051.4 SF



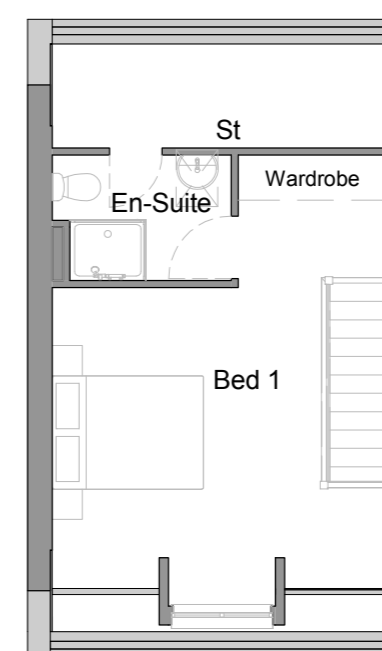
Ground Floor.

1 : 100



First Floor.

1 : 100



Second Floor.

1 : 100

House Type Range		Sub Range	
2018 Range		OMS	
Scale at A3	Date	Drawn	Checked
As indicated	01/11/2017	JF	NTL
Pack Title			
The Bamburgh Working Drawing Pack			
Sheet Name			
Planning Drawings			
Coins Code	House Type Code	Plotting	Handing
BAMBUR		END	AS
		Style	Issue
		BB	01
Project Drawing Pack No.	Project	Pack No.	Rev
18CORE		1200	1
		Sheet	
		201	

For internal use only
1004.52 ft² / 93.32 m²

Bamburgh

3 Bed 5 Person



C=12 R=218
M=23 G=197
Y=0 B=224
K=0



House Type Description.

The Bamburgh three-storey, three-bedroom family home offers lots of floor space and a show-stopping master bedroom suite.

Families will love the Bamburgh. From the entrance hall, you're greeted by a modern and spacious kitchen/diner. The dining area has more than enough room for a proper family-sized table. The lounge at the rear of the home is light and airy thanks to the French doors overlooking the garden.

Head up the stairs and there are two great-sized bedrooms and a stylish family bathroom. But this home has a great treat waiting for you. On the second floor, there's a large master bedroom suite. An oasis of calm, it has a shower room and lots of handy storage.

Key Features.

- Modern three-bedroom, three-storey home
- 1005sq. ft. of living space
- Master bedroom with en suite
- Spacious kitchen/diner
- Downstairs WC
- French doors in lounge
- Storage on every floor
- Make your home your own with **Keepmoat Options**
- Move in with just a 5% deposit with **Help to Buy**
- Got a home to sell? With **EasyMove** we can help