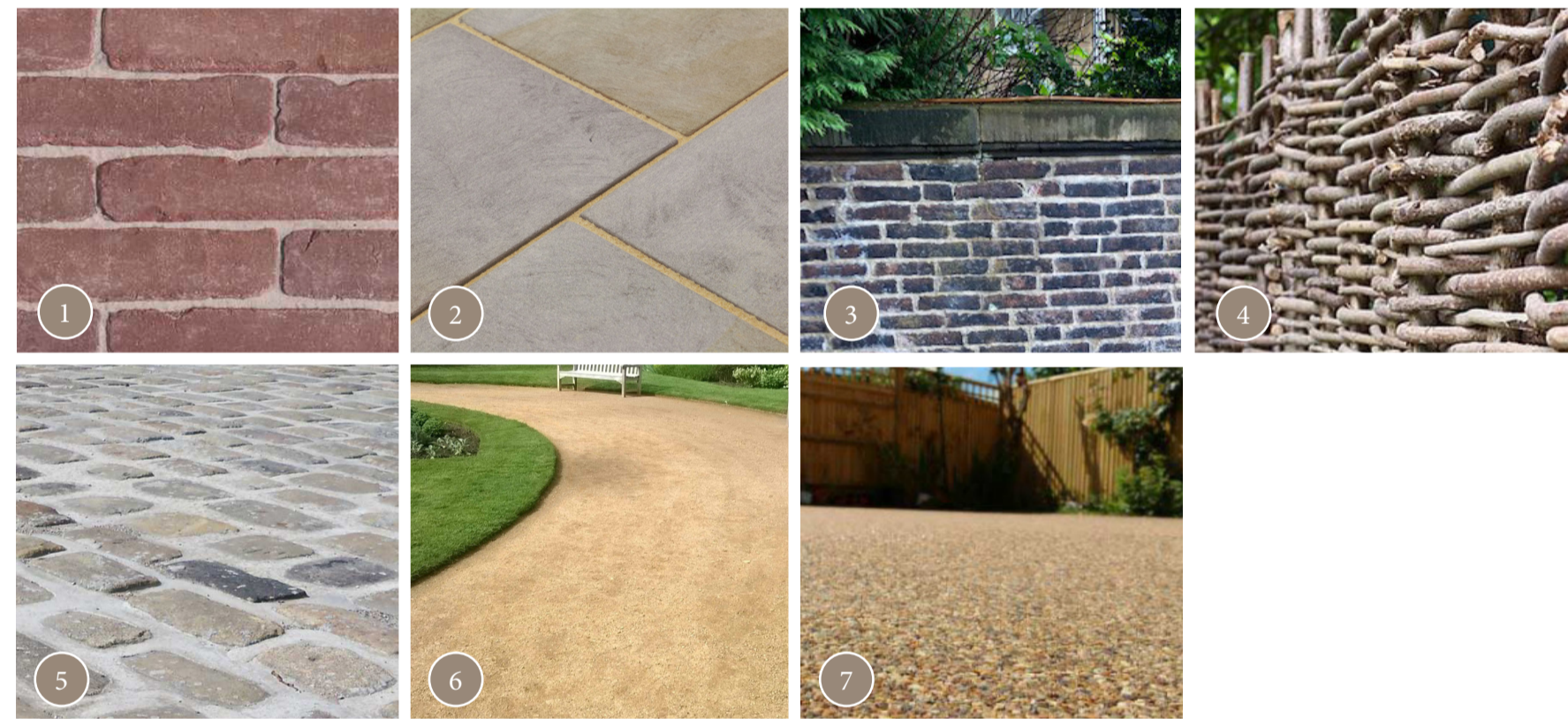


Darley Cliffe Hall, Front Garden General Arrangement Rev A

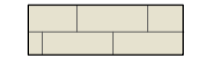

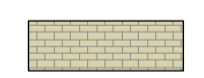

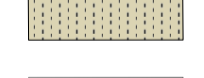
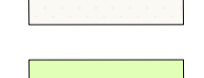
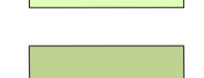

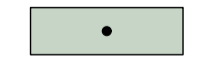

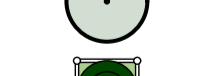


Planting

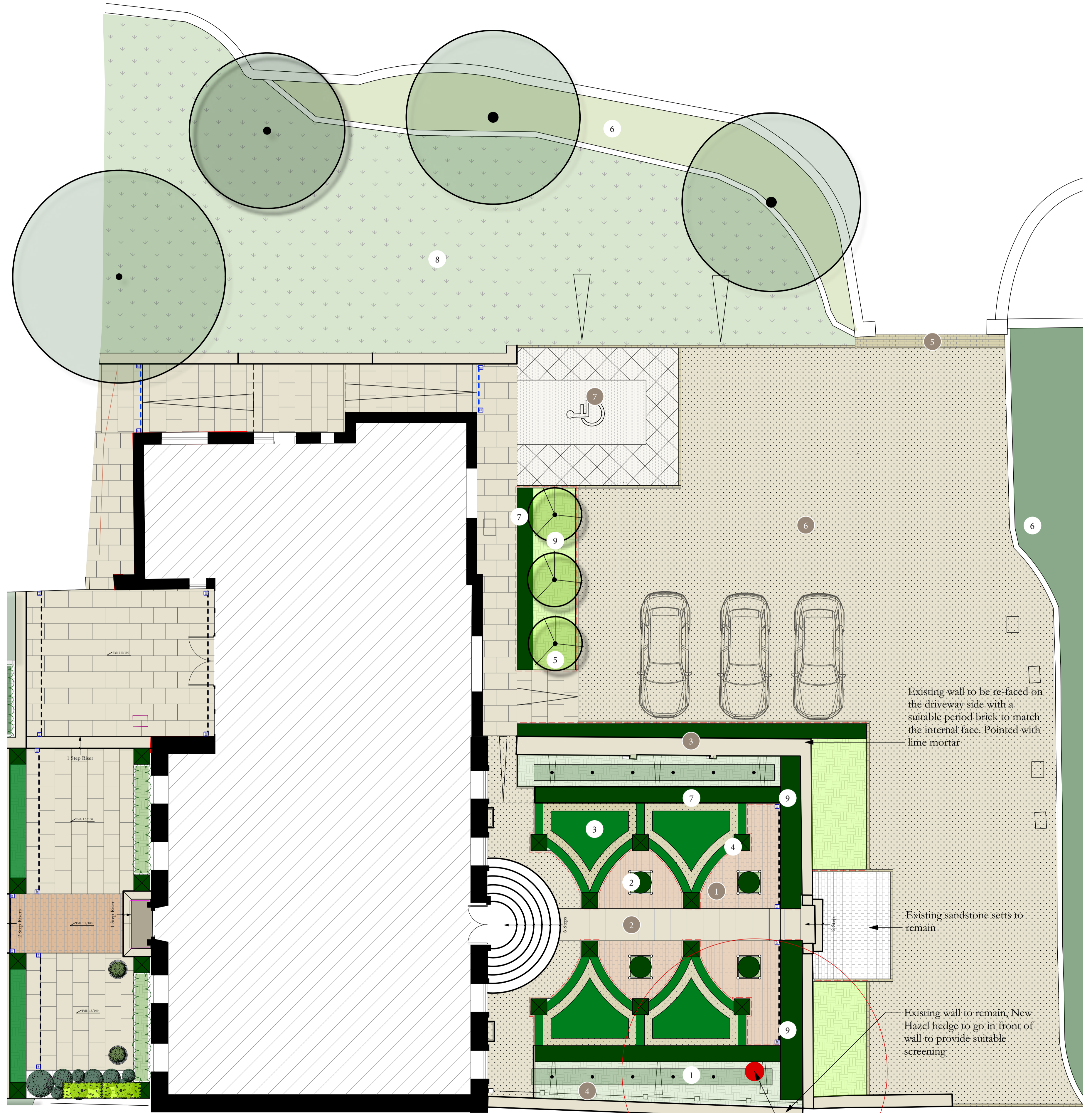


Materials



Key

-  Sawn York Stone Paving
-  Brick Pavers To Match Existing Queen Ann Bricks
-  Reclaimed sandstone Setts
-  Lawn
-  Resin Bound Gravel
-  Self Binding Gravel
-  Herbaceous Planting
-  Shrub Planting
-  Low Evergreen Hedge
-  Stilted Hedge
-  New Tree
-  Existing Tree
-  Topiary In Planter



Existing wall to be re-faced on the driveway side with a suitable period brick with a suitable internal face. Pointed with lime mortar

Existing sandstone setts to remain

Existing wall to remain, New Hazel hedge to go in front of wall to provide suitable screening

Copper beech tree circled in red subject to tree removal submission ref 2021/1567

