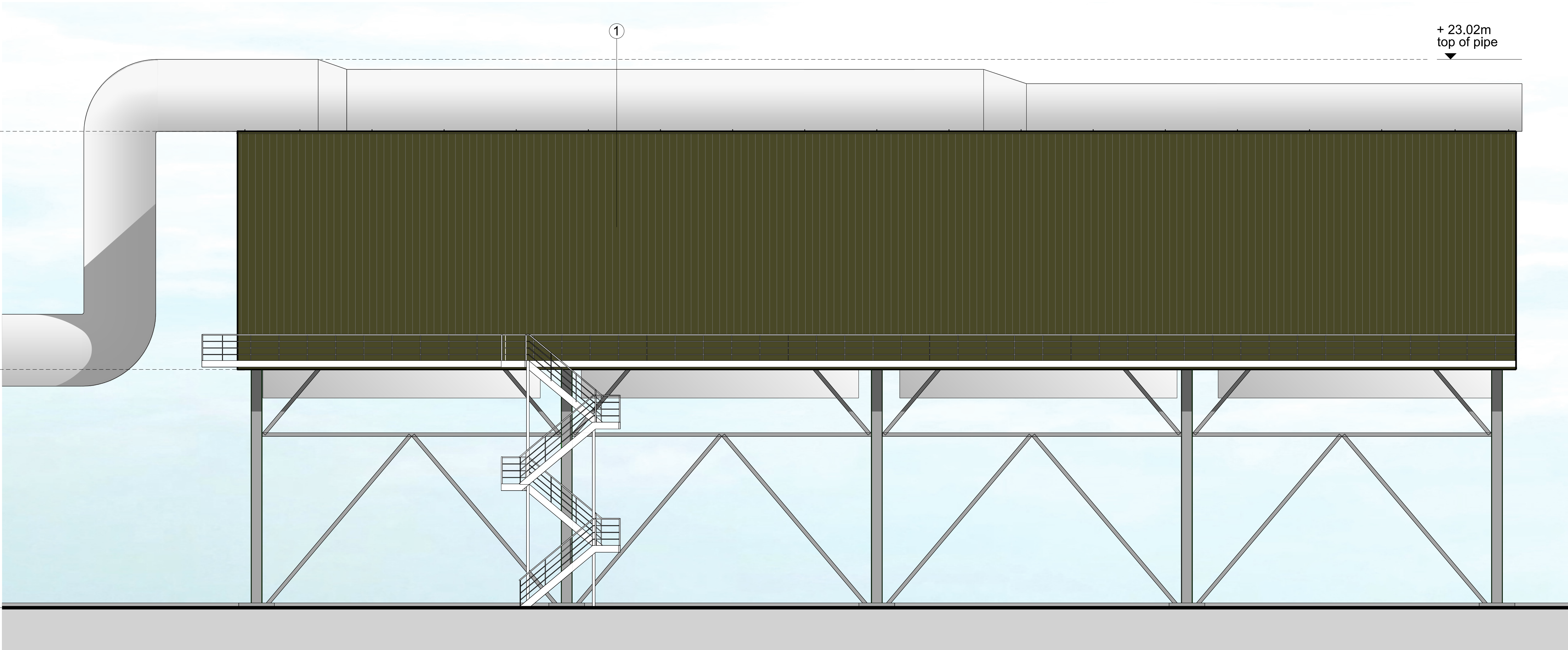


South east elevation



North east elevation

+ 23.02m
top of pipe

- NOTE
1. THIS DRAWING IS COPYRIGHT GSDA LTD
 2. THE CONTRACTOR MUST NOT SCALE FROM THE DRAWING ALL DIMENSIONS TO BE TAKEN FROM DIMENSION STRINGS.
 3. WHERE ANY DISCREPANCIES ARE FOUND BETWEEN DIMENSIONS THESE MUST BE BROUGHT TO THE ATTENTION OF THE ARCHITECTS FOR RESOLUTION.
 4. WHERE DISCREPANCIES EXIST BETWEEN REFERENCE OR ASSEMBLY DRAWINGS & DETAIL DRAWINGS, THE LATTER TAKE PREFERENCE.

- MATERIALS KEY
- 1 Plastic Coated Steel Cladding, Trapezoidal Profile Colour: Olive Green (RAL 100 30 20)
 - 2 Metal Ventilation Louvers Colour: Olive Green (RAL 100 30 20)
 - 3 Plastic Coated Steel Roof System, Trapezoidal Profile Colour: Pure Grey (RAL 000 55 00)
 - 4 PPC Aluminium Window Frames And Doors Colour: Merlin Grey (RAL 180 40 05)
 - 5 Grey Engineering Brick Plinth
 - 6 Metal Stack Colour: Oyster (RAL 7035)
 - 7 Metal Roller Shutter Doors
 - 8 In-Plane Polycarbonate Rooflight System
 - 9 Roof Vent Cows
- Note: All materials, finishes and colours will be as stated or similar approved

A	150130	Issued for planning
-	150123	Issued for planning

FOR PLANNING

GSDA
Highlands House, Office 101A, 105 The Broadway, Wimbledon, London, SW19 1NE
T: 020 8544 8085

HOUGHTON MAIN REC
PROJECT

Proposed ACC elevations 1

DRAWING		
1:100@A1		150130
1:200@A3		
SCALE	DATE	
1313_PL010	A	GS
DWG. NO.	REVISION	CHECKED