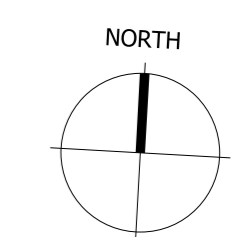
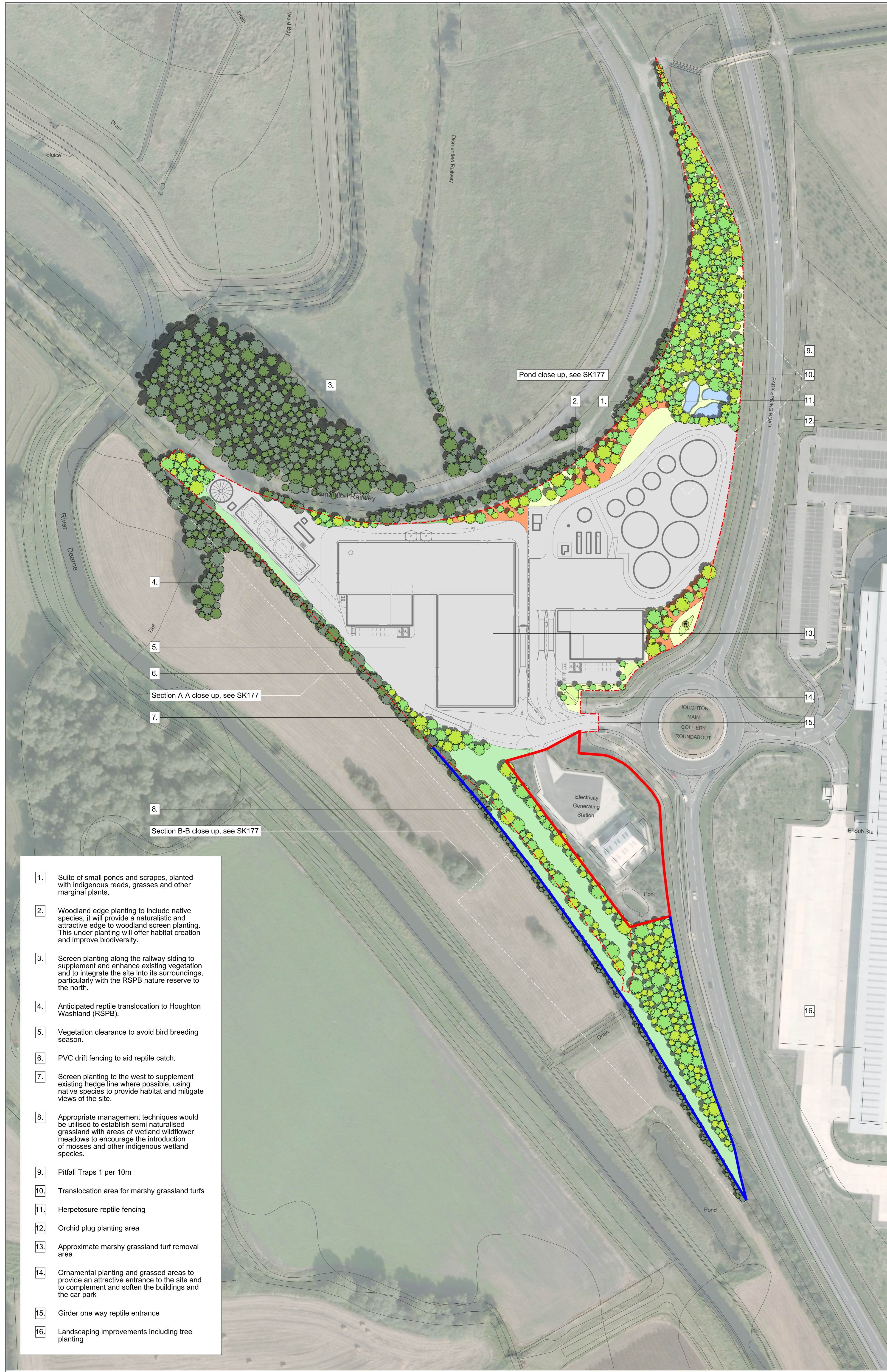


NOTE

1. THIS DRAWING IS COPYRIGHT GSDA LTD.
2. THE CONTRACTOR MUST NOT SCALE FROM THE DRAWING ALL DIMENSIONS TO BE TAKEN FROM DIMENSION STRINGS.
3. WHERE ANY DISCREPANCIES ARE FOUND BETWEEN DIMENSIONS THESE MUST BE BROUGHT TO THE ATTENTION OF THE ARCHITECTS FOR RESOLUTION.
4. WHERE DISCREPANCIES EXIST BETWEEN REFERENCE OR ASSEMBLY DRAWINGS & DETAIL DRAWINGS, THE LATTER TAKE PREFERENCE.



- KEY
- Site Boundary
 - Alkane Lease Boundary
 - Harworth Residual Land
 - Existing Vegetation
 - Proposed Woodland Screen Planting
 - Proposed Woodland Edge Planting
 - Grassland
 - Ornamental Planting
 - Ponds and Marginal Planting
 - Landscaped Green Corridor
 - Sculptural / Historical Focal Point



3. Pond close up, see SK177

2. Pond close up, see SK177

4. Section A-A close up, see SK177

8. Section B-B close up, see SK177

1. Suite of small ponds and scrapes, planted with indigenous reeds, grasses and other marginal plants.
2. Woodland edge planting to include native species, it will provide a naturalistic and attractive edge to woodland screen planting. This under planting will offer habitat creation and improve biodiversity.
3. Screen planting along the railway siding to supplement and enhance existing vegetation and to integrate the site into its surroundings, particularly with the RSPB nature reserve to the north.
4. Anticipated reptile translocation to Houghton Washland (RSPB).
5. Vegetation clearance to avoid bird breeding season.
6. PVC drift fencing to aid reptile catch.
7. Screen planting to the west to supplement existing hedge line where possible, using native species to provide habitat and mitigate views of the site.
8. Appropriate management techniques would be utilised to establish semi naturalised grassland with areas of wetland wildflower meadows to encourage the introduction of mosses and other indigenous wetland species.
9. Pitfall Traps 1 per 10m
10. Translocation area for marshy grassland turfs
11. Herpetore reptile fencing
12. Orchid plug planting area
13. Approximate marshy grassland turf removal area
14. Ornamental planting and grassed areas to provide an attractive entrance to the site and to complement and soften the buildings and the car park
15. Girder one way reptile entrance
16. Landscaping improvements including tree planting

C	140930	Issued for information
B	140929	Issued for information
A	140925	References added for SK177
-	140923	Issued for information

FOR INFORMATION

GSDA
 Highlands House, Office 101A, 165 The Broadway, Wimbledon, London, SW19 1NE
 T: 020 8544 8066

HOUGHTON MAIN REP

PROJECT
 Landscaping Masterplan

DRAWING
 1:1000@A1 140930
 1:2000@A3
 SCALE DATE

1302_SK166	C	GS
DWG. NO.	REVISION	CHECKED

