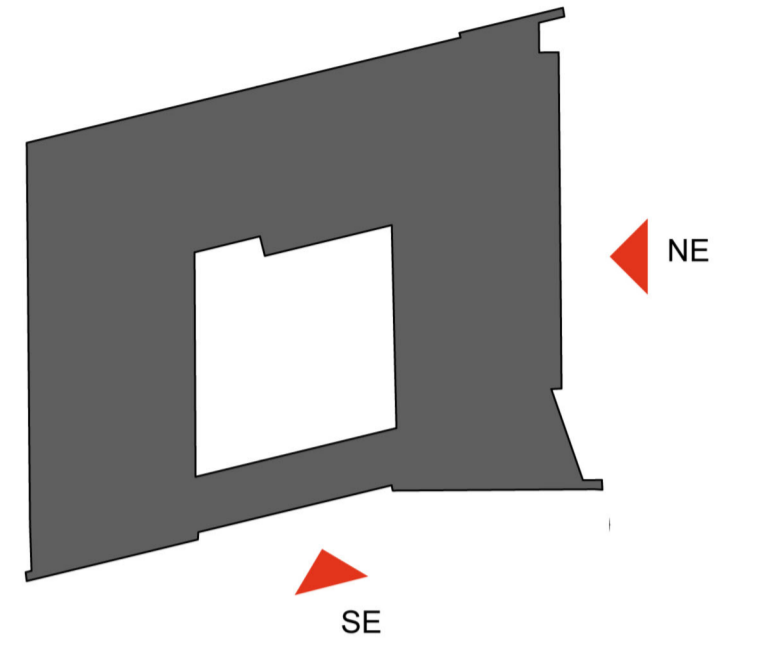


6th FORM CENTRE

NOTE:
This drawing is to show design intent and is subject to design development.

KEY PLAN



ELEVATION MATERIALS KEY

1. Portland Stone Rainscreen Cladding
2. Pressed Metal Cassette Rainscreen Cladding (Brass effect)
3. Facing Brickwork (Blue)
4. Facing Brickwork (Red)
5. Recessed Profiled PPC Aluminium Cladding Band
6. Timber Clad Reveal / Soffit
7. Double Glazed Curtain Wall System
8. Top Hung Opening Window glazed into Curtain Walling System
9. Top Hung Opening Window glazed into Curtain Walling System with Electronic Actuators connected to BMS
10. Fully Glazed Door
11. Fully Glazed Revolving Door
12. Insulated PPC Steel Doorset
13. Building Signage
14. PPC Aluminium Louvred Plant Screening
15. Metal Security Roller Grill
16. PPC Aluminium Louvred Panel

P3.1 Tender Issue	MClI	MH	07.03.14
Landscape updated			
Material representation updated (PDF only)			
P3 Tender Issue	SP	MC	17.01.14
P2 Planning Issue	SP	MC	17.12.13
P1 First issue	MClI	MH	21.11.13

revision/description	drawn	checked	date
----------------------	-------	---------	------

Bond Bryan Architects



the church studio springvale road sheffield S10 1LP
 t +44(0)114 266 2040 w www.bondbryan.com
 f +44(0)114 268 7021 tw @bondbryan
 e Bamsley-Sixthform@bondbryan.co.uk

Barnsley College 6th Form Centre

BARNESLEY COLLEGE

GA Elevations

bba project ref	scale	purpose of issue
13-133	1:150 @A1	PRELIMINARY

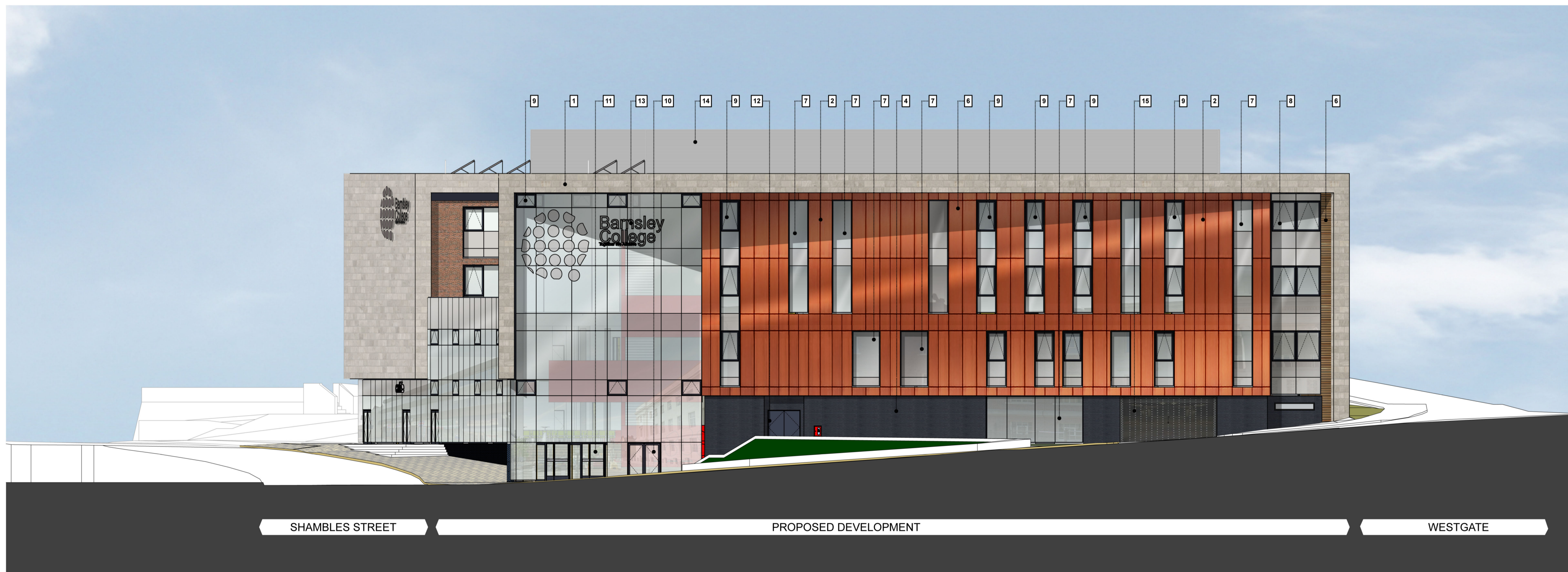
drawing/document no.	project	originator	zone	level	type	role	number	status	rev
----------------------	---------	------------	------	-------	------	------	--------	--------	-----

BSC - BBA - Z0 - ZZ - DR - A - 03001 D2 P3.1

This document is © Bond Bryan Architects Ltd. If in doubt ASK. Drawing measurements shall not be obtained by scaling. Verify all dimensions prior to construction. Immediately report any discrepancies on this document to the Architect. This document shall be read in conjunction with associated models, specifications and related consultant's documents.



SOUTH EAST ELEVATION - SHAMBLES STREET



NORTH EAST ELEVATION - ST MARY'S PLACE