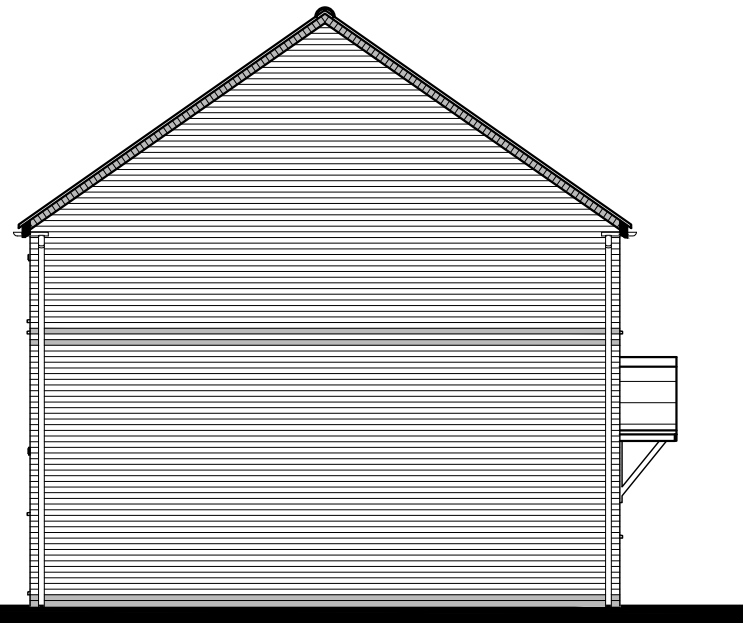


Revisions:	Date:
E. Meter positions identified, Elevations reordered.	04.02.19
D. Rear RWP's repositioned.	12.08.15
C. Detail removed from OPP handing.	06.11.14
B. Verge detail note revised.	22.10.13
A. SVP tile vent added.	17.09.13



FRONT ELEVATION



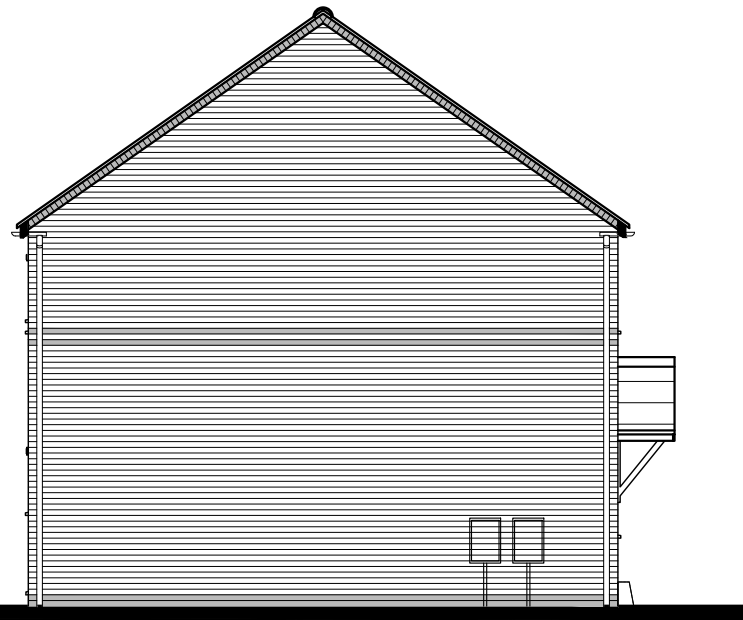
SIDE ELEVATION

**FEATURES**

- \* Rolled profile roof tiles.
- \* Dry verge detail.
- \* Exposed rafter feet at eaves.
- \* Flat brick soldier arches.
- \* Cottage style windows with horizontal glazing bar.
- \* Brick cills.
- \* Cottage style main entrance door, with dual pitch canopy over on "gallows brackets"
- \* Triple band course at FF window cill level, cill omitted
- \* Brick quoins to corner and render on selected plots
- \* Vertical panel garage door
- \* Dark brick below DPC



REAR ELEVATION



SIDE ELEVATION



Client: **GLEESON HOMES & REGENERATION**

Project: **HOUSE TYPE DRAWING**

Title: **TYPE 201 ELEVATIONS ( RURAL 13 )**

Scales: 1:100 @ A3 Cad ref :

Drawn: Checked: Date: July 2010

Drawing no. **13/201 -8** Rev. **E**