

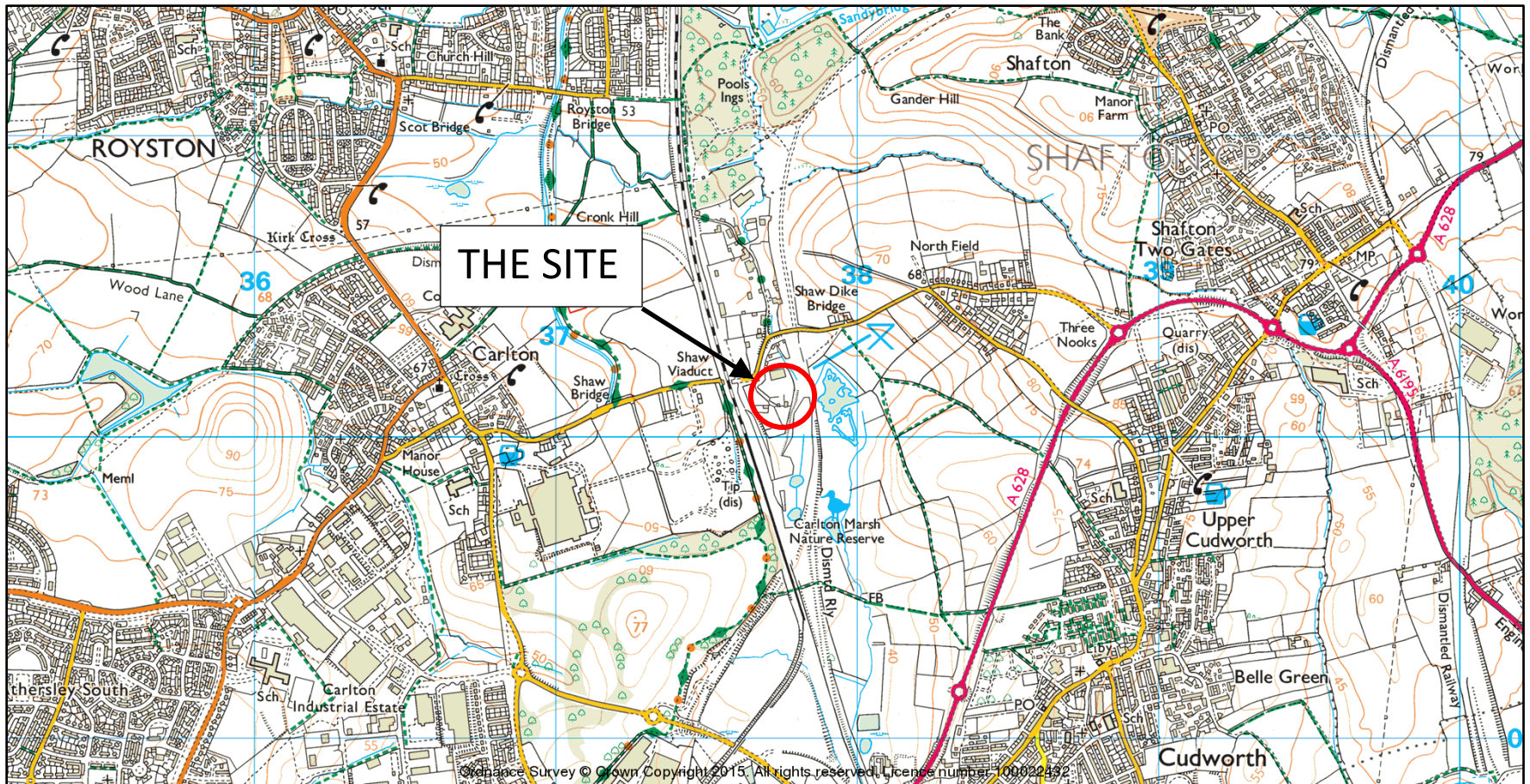
TABLES

TABLE A: Summary of Soil Chemical Test Results		PP/759/SLB/W S2	PP/759/SLB/W S2	PP/759/SLB/W S2	PP/759/SLB/W S3	PP/759/SLB/W S3	PP/759/SLB/W S5	PP/759/SLB/W S5	PP/759/SLB/W S5	PP/759/SLB/W S5	PP/759/SLB/W S6	PP/759/SLB/W S6	PP/759/SLB/W S6	PP/759/SLB/W S7	PP/759/SLB/W S8	PP/759/SLB/W S8	PP/759/SLB/W S8	PP/759/SLB/W S9	PP/759/SLB/W S10	PP/759/SLB/W S10	PP/759/SLB/W S10	PP/759/SLB/W S9B	PP/759/SLB/W S9B	PP/759/SLB/W S9B	PP/759/SLB/W S11	No.	Range		GAC	
Determinand	Unit	0.40 - 0.50	1.00 - 2.00	2.30 - 2.40	0.90 - 1.00	2.80 - 3.00	0.70 - 0.80	1.30 - 1.40	1.90 - 2.00	2.80-2.90	0.10 - 0.30	0.90 - 1.00	1.00-1.10	2.40-2.50	0.70 - 0.85	0.30 - 0.40	1.55 - 1.70	3.55 - 3.77	0.80 - 1.00	1.20 - 1.35	2.00 - 2.30	2.40 - 2.50	0.40 - 0.50	0.90-1.00	2.60-2.70	0.20 - 0.40	Min	Max	Commercial	
Asbestos Screen	N/a	Not Detected	Not Detected				Not Detected				Not Detected				Not Detected										Not Detected	6	ND	ND		
pH	pH Units	8.9	7.8		7.7		10.0				11.7				8.6		7.5	7.7								11	7.5	11.7	6-9	
Total Cyanide	mg/kg	< 2	< 2		< 2		< 2				< 2				< 2		< 2									7	< 2	< 2	40	
Total Sulphate as SO ₄	mg/kg		1979		3144		4630				4503			4517			827									7	827	19710		
Total Sulphate as SO ₄	%		0.20		0.31		0.46				0.45			0.45			0.08									7	0.080	1.97		
W/S Sulphate as SO ₄ (2:1)	mg/l	364			91						473			281			26									8	26	281		
W/S Sulphate as SO ₄ (2:1)	g/l	0.36			0.09						0.47			0.28			0.03									8	0.03	0.47		
Sulphide	mg/kg		< 5		< 5		< 5				70			12			324									7	< 5	324		
Organic Matter	%		9.2	5.1		1					5.6			8.2												5	1	8.2		
Arsenic (As)	mg/kg		33		27		8				19			5			22									7	5	27	640	
W/S Boron	mg/kg		3		1.2		2.2				7.3			4.2			4.6									7	1.2	7.3	240,000	
Cadmium (Cd)	mg/kg		0.8		0.5		0.2				2			1.9			0.4									7	0.2	3.2	190	
Chromium (Cr)	mg/kg		15		9		18				51			29			12									7	9	57	8600	
Copper (Cu)	mg/kg		283		51		26				195			206			56									7	26	283	68,000	
Lead (Pb)	mg/kg		111		32		99				131			144			30									7	30	458	2300	
Mercury (Hg)	mg/kg		< 1		< 1		< 1				< 1			< 1			< 1									7	< 1	< 1	58	
Nickel (Ni)	mg/kg		23		23		16				29			19			24									7	16	29	980	
Selenium (Se)	mg/kg		< 3		< 3		< 3				< 3			< 3			< 3									7	< 3	< 3	12,000	
Zinc (Zn)	mg/kg		213		55		62				486			379			75									7	55	587	730,000	
Total Phenols (monohydric)	mg/kg		< 2		< 2		< 2				< 2			< 2			< 2									7	< 2	< 2	760	
Tentative Petroleum Type																														
Naphthalene	mg/kg		0.40		0.35		0.63	0.34			0.62			0.24			0.77		0.13	0.20						11	< 0.1	1.47	190	
Acenaphthylene	mg/kg		< 0.1		< 0.1		< 0.1	< 0.1			< 0.1			0.12			< 0.1		< 0.1	< 0.1						11	< 0.1	0.20	83,000	
Acenaphthene	mg/kg		< 0.1		< 0.1		< 0.1	< 0.1			< 0.36			< 0.1			< 0.1		< 0.1	< 0.1						11	< 0.1	0.79	84,000	
Fluorene	mg/kg		< 0.1		< 0.1		< 0.1	< 0.1			0.77			0.62			< 0.1		< 0.1	0.20						11	< 0.1	1.46	63,000	
Phenanthrene	mg/kg		0.60		0.42		0.74	0.42			2.02			1.45			< 0.1		< 0.1	0.64						11	< 0.1	3.93	22,000	
Anthracene	mg/kg		< 0.1		< 0.1		0.16	0.11			0.42			0.27			< 0.1		< 0.1	0.24						11	< 0.1	0.82	520,000	
Fluoranthene	mg/kg		0.60		0.21		0.70	0.24			1.64			1.22			0.59		0.64	0.89						11	< 0.1	3.86	23,000	
Pyrene	mg/kg		0.49		0.20		0.63	0.22			1.85			2.02			0.44		0.96	1.43						11	< 0.1	4.12	54,000	
Benzo(a)anthracene	mg/kg		0.19		< 0.1		0.28	< 0.1			0.47			0.62			0.14		0.31	0.45						11	< 0.1	1.28	170	
Chrysene	mg/kg		0.22		0.12		0.42	0.14			0.75			1.13			0.23		0.50	0.64						11	< 0.1	1.70	350	
Benzo(b)fluoranthene	mg/kg		0.19		< 0.1		0.38	0.14			0.78			1.38			0.22		0.60	0.91						11	< 0.1	1.96	44	
Benzo(k)fluoranthene	mg/kg		< 0.1		< 0.1		0.17	< 0.1			0.29			0.36			< 0.1		< 0.1	0.25						11	< 0.1	0.70	1200	
Benzo(a)pyrene	mg/kg		< 0.1		< 0.1		0.29	< 0.1			0.48			0.62			0.34		0.54	0.17						11	< 0.1	1.35	35	
Indeno(1,2,3-cd)pyrene	mg/kg		< 0.1		< 0.1		0.17	< 0.1			0.31			0.57			< 0.1		0.23	0.43						11	< 0.1	0.92	500	
Dibenz(a,h)anthracene	mg/kg		< 0.1		< 0.1		< 0.1	< 0.1			< 0.1			< 0.1			< 0.1		< 0.1	< 0.1						11	< 0.1	0.16	3.5	
Benzo(ghi)perylene	mg/kg		< 0.1		< 0.1		0.19	< 0.1			0.31			0.54			< 0.1		0.24	0.35						11	< 0.1	0.78	3900	
Total EPA-16 PAHs	mg/kg		2.7		< 1.6		4.8	1.6			11.1			11.2			3.9		7.2	7.2						11	< 1.6	25.50		
EPH Texas Banded C6-C8									< 0.05			< 0.05														3	< 0.05	< 0.05		
EPH Texas Banded >C8 - C10	mg/kg						3	< 1			8		4													7	< 1	268.00	2000	
EPH Texas Banded >C10 - C12	mg/kg						5	< 1			38		3													7	< 1	652	9700	
EPH Texas Banded >C12 - C16	mg/kg						10	< 1			236		11													7	< 1	1849	36,000	
EPH Texas Banded >C16 - C21	mg/kg						16	< 1			316		18													7	< 1	3142	28,000	
EPH Texas Banded >C21 - C40	mg/kg						270	< 6			591		33													7	< 6	11264	28,000	
EPH Texas Banded (C6 - C40)	mg/kg						304	< 6			1189		69													7	< 6	17174	28,000	
Benzene	ug/kg						< 2				13						< 2		< 2	< 2						6	< 2	13	27,000	
Toluene	ug/kg						< 5				31						< 5		< 5	< 5						6	< 5	31	56,000	
Ethylbenzene	ug/kg						< 2				13						36		< 2	< 2						6	< 2	259	5,700	
p & m-xylene	ug/kg						< 2				46						81		< 2	< 2						6	< 2	408	5,900	
o-xylene	ug/kg						< 2				36						41		< 2	< 2						6	< 2	467	6,600	
MTBE	ug/kg						< 5				< 5						< 5		< 5	< 5						6	< 5	< 5		
Aliphatic >C5 - C6	mg/kg						< 0.01				< 0.01						< 0.01		< 0.01	< 0.01						6	< 0.01	< 0.01	3200	
Aliphatic >C6 - C8	mg/kg						< 0.05				< 0.05						< 0.05		< 0.05	< 0.05						6	< 0.05	< 0.05	7800	

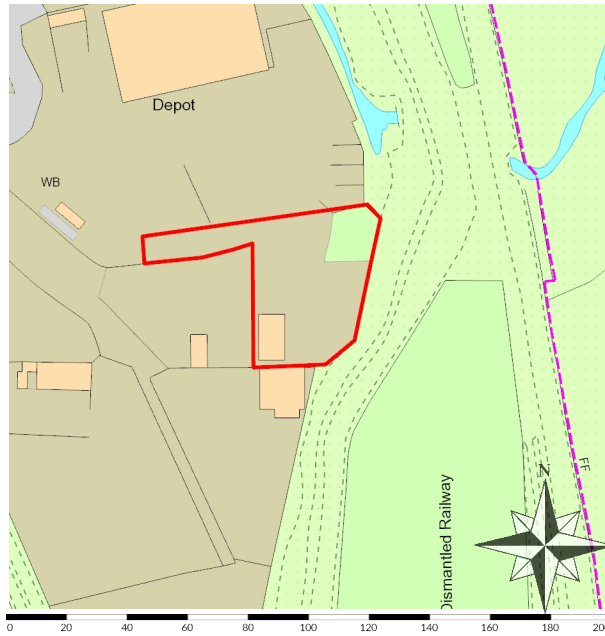
TABLE A: Summary of Soil Chemical Test Results		PP/759/SLB/W S2	PP/759/SLB/W S2	PP/759/SLB/W S2	PP/759/SLB/W S3	PP/759/SLB/W S3	PP/759/SLB/W S5	PP/759/SLB/W S5	PP/759/SLB/W S5	PP/759/SLB/W S5	PP/759/SLB/W S6	PP/759/SLB/W S6	PP/759/SLB/W S6	PP/759/SLB/W S7	PP/759/SLB/W S8	PP/759/SLB/W S8	PP/759/SLB/W S8	PP/759/SLB/W S9	PP/759/SLB/W S10	PP/759/SLB/W S10	PP/759/SLB/W S10	PP/759/SLB/W S9B	PP/759/SLB/W S9B	PP/759/SLB/W S11	No.	Range		GAC			
		0.40 - 0.50	1.00 - 2.00	2.30 - 2.40	0.90 - 1.00	2.80 - 3.00	0.70 - 0.80	1.30 - 1.40	1.90 - 2.00	2.80-2.90	0.10 - 0.30	0.90 - 1.00	1.00-1.10	2.40-2.50	0.70 - 0.85	0.30 - 0.40	1.55 - 1.70	3.55 - 3.77	0.80 - 1.00	1.20 - 1.35	2.00 - 2.30	2.40 - 2.50	0.40 - 0.50	0.90-1.00	2.60-2.70	0.20 - 0.40		Min	Max	Commercial	
Determinand	Unit																														
Dichlorodifluoromethane	ug/kg																			< 5	< 5			< 5				3	<5	<5	
Vinyl Chloride	ug/kg																			< 5	< 5			< 5				3	<5	<5	
Chloroethane	ug/kg																			< 10	< 10			< 10				3	<10	<10	
Chloroethane	ug/kg																			< 5	< 5			< 5				3	<5	<5	
Bromomethane	ug/kg																			< 10	< 10			< 10				3	<10	<10	
Trichlorofluoromethane	ug/kg																			58	< 5			87				3	<5	87	
1,1-Dichloroethene	ug/kg																			< 5	< 5			< 5				3	<5	<5	
MTBE	ug/kg																			< 5	< 5			< 5				3	<5	<5	
trans-1,2-Dichloroethene	ug/kg																			< 5	< 5			< 5				3	<5	<5	
1,1-Dichloroethane	ug/kg																			< 5	< 5			< 5				3	<5	<5	
cis-1,2-Dichloroethene	ug/kg																			< 5	< 5			< 5				3	<5	<5	
2,2-Dichloropropane	ug/kg																			< 5	< 5			< 5				3	<5	<5	
Chloroform	ug/kg																			< 5	< 5			< 5				3	<5	<5	
Bromochloromethane	ug/kg																			< 5	< 5			< 5				3	<5	<5	
1,1,1-Trichloroethane	ug/kg																			< 5	< 5			< 5				3	<5	<5	
1,1-Dichloropropene	ug/kg																			< 10	< 10			< 10				3	<10	<10	
Carbon Tetrachloride	ug/kg																			< 5	< 5			< 5				3	<5	<5	
1,2-Dichloroethane	ug/kg																			< 5	< 5			< 5				3	<5	<5	
Benzene	ug/kg																			< 2	< 2			< 2				3	<2	<2	
1,2-Dichloropropane	ug/kg																			< 5	< 5			< 5				3	<5	<5	
Trichloroethene	ug/kg																			< 5	< 5			< 5				3	<5	<5	
Bromodichloromethane	ug/kg																			< 5	< 5			< 5				3	<5	<5	
Dibromomethane	ug/kg																			< 5	< 5			< 5				3	<5	<5	
TAME	ug/kg																			< 5	< 5			< 5				3	<5	<5	
cis-1,3-Dichloropropene	ug/kg																			< 5	< 5			< 5				3	<5	<5	
Toluene	ug/kg																			< 5	< 5			< 5				3	<5	<5	
trans-1,3-Dichloropropene	ug/kg																			< 5	< 5			< 5				3	<5	<5	
1,1,2-Trichloroethane	ug/kg																			< 10	< 10			< 10				3	<10	<10	
1,3-Dichloropropane	ug/kg																			< 5	< 5			< 5				3	<5	<5	
Tetrachloroethane	ug/kg																			< 5	< 5			< 5				3	<5	<5	
Dibromochloromethane	ug/kg																			< 5	< 5			< 5				3	<5	<5	
1,2-Dibromoethane	ug/kg																			< 5	< 5			< 5				3	<5	<5	
Chlorobenzene	ug/kg																			< 5	< 5			< 5				3	<5	<5	
1,1,1,2-Tetrachloroethane	ug/kg																			< 5	< 5			< 5				3	<5	<5	
Ethyl Benzene	ug/kg																			36	< 2			259				3	<2	259	5700
m,p-Xylene	ug/kg																			81	< 2			408				3	<2	408	5900
o-Xylene	ug/kg																			41	< 2			467				3	<2	467	6600
Styrene	ug/kg																			61	< 5			1846				3	<5	1846	3,330,000
Bromoform	ug/kg																			< 10	< 10			< 10				3	<10	<10	
Isopropylbenzene	ug/kg																			< 5	< 5			221				3	<5	221	1,400,000
1,1,2,2-Tetrachloroethane	ug/kg																			< 5	< 5			< 5				3	<5	<5	
1,2,3-Trichloropropane	ug/kg																			< 5	< 5			< 5				3	<5	<5	
n-Propylbenzene	ug/kg																			< 5	< 5			514				3	<5	514	4,100,000
Bromobenzene	ug/kg																			< 5	< 5			< 5				3	<5	<5	
2-Chlorotoluene	ug/kg																			< 5	< 5			< 5				3	<5	<5	
1,3,5-Trimethylbenzene	ug/kg																			27	< 5			1256				3	<5	1256	
4-Chlorotoluene	ug/kg																			< 5	< 5			< 5				3	<5	<5	
tert-Butylbenzene	ug/kg																			< 5	< 5			< 5				3	<5	<5	
1,2,4-Trimethylbenzene	ug/kg																			42	< 5			3438				3	<5	3438	42,000
sec-Butylbenzene	ug/kg																			< 5	< 5			367				3	<5	367	
p-Isopropyltoluene	ug/kg																			< 5	< 5			294				3	<5	294	
1,3-Dichlorobenzene	ug/kg																			< 5	< 5			< 5				3	<5	<5	
1,4-Dichlorobenzene	ug/kg																			< 5	< 5			< 5				3	<5	<5	
n-Butylbenzene	ug/kg																			< 5	< 5			887				3	<5	887	
1,2-Dichlorobenzene	ug/kg																			< 5	< 5			< 5				3	<5	<5	
1,2-Dibromo-3-chloropropane	ug/kg																			< 10	< 10			< 10				3	<10	<10	
Hexachlorobutadiene	ug/kg																			< 5	< 5			< 5				3	<5	<5	

TABLE B: Summary of groundwater chemical test results		PP/759/SLB/WS1	PP/759/SLB/WS2	PP/759/SLB/WS5	PP/759/SLB/WS8	PP/759/SLB/WS9	PP/759/SLB/WS10	PP/759/SLB/WS10	UK Drinking Water Standard	Surface Water EQS
Determinand	Depth--> Unit							Water 1		
pH	pH Units	7.7	8.1	7.7	7.3	7.4		7.9	6-9	6-9
Free Cyanide	ug/l	< 5	< 5	< 5	< 5	< 5		< 5		1
Ammonia as NH ₃	ug/l	4060	599	5050	1240	9310		195000		0.25-9 mg/l
Dissolved Oxygen	mg/l	5.5	6.5	5.4	6	4.1		4.2		7
Arsenic (dissolved)	ug/l	11	< 5	9	< 5	6		15	10	25
Barium (dissolved)	ug/l	219	58	102	92	228		468		
Beryllium (dissolved)	ug/l	< 3	< 3	< 3	< 3	< 3		< 3		
Boron (dissolved)	ug/l	291	388	608	181	737		1000	1000	
Cadmium (dissolved)	ug/l	< 0.4	< 0.4	< 0.4	< 0.4	< 0.4		< 0.4	5	2
Chromium (dissolved)	ug/l	< 5	< 5	< 5	< 5	< 5		< 5	50	32 Cr III
Copper (dissolved)	ug/l	< 5	< 5	< 5	< 5	< 5		< 5	2000	5
Lead (dissolved)	ug/l	< 5	< 5	< 5	< 5	< 5		< 5	10	7.2
Mercury (dissolved)	ug/l	< 0.05	< 0.05	< 0.05	< 0.05	< 0.05		< 0.05	1	0.05
Nickel (dissolved)	ug/l	< 5	< 5	< 5	8	< 5		< 5	20	20
Selenium (dissolved)	ug/l	< 5	< 5	< 5	< 5	< 5		< 5	10	
Vanadium (dissolved)	ug/l	< 5	< 5	< 5	< 5	< 5		< 5		
Zinc (dissolved)	ug/l	7	4	2	15	< 2		< 2		40
Tentative Petroleum Type							Typical of diesel range organics			
Naphthalene	ug/l	0.20	0.01	< 0.01	< 0.01	0.10		0.12		1.2 ug/l
Acenaphthylene	ug/l	< 0.01	< 0.01	< 0.01	< 0.01	< 0.01		< 0.01		
Acenaphthene	ug/l	0.15	< 0.01	< 0.01	< 0.01	0.04		0.06		
Fluorene	ug/l	0.08	< 0.01	< 0.01	< 0.01	< 0.01		0.06		
Phenanthrene	ug/l	0.13	< 0.01	< 0.01	< 0.01	< 0.01		0.06		
Anthracene	ug/l	0.04	< 0.01	< 0.01	< 0.01	< 0.01		< 0.01		0.1ug/l
Fluoranthene	ug/l	0.03	< 0.01	< 0.01	< 0.01	< 0.01		< 0.01		0.1ug/l
Pyrene	ug/l	0.03	< 0.01	< 0.01	< 0.01	< 0.01		< 0.01		
Benzo(a)anthracene	ug/l	< 0.01	< 0.01	< 0.01	< 0.01	< 0.01		< 0.01		
Chrysene	ug/l	< 0.01	< 0.01	< 0.01	< 0.01	< 0.01		< 0.01		
Benzo(b)fluoranthene	ug/l	< 0.01	< 0.01	< 0.01	< 0.01	< 0.01		< 0.01		
Benzo(k)fluoranthene	ug/l	< 0.01	< 0.01	< 0.01	< 0.01	< 0.01		< 0.01		
Benzo(a)pyrene	ug/l	< 0.01	< 0.01	< 0.01	< 0.01	< 0.01		< 0.01	0.01 ug/l	0.05 ug/l
Indeno(1,2,3-cd)pyrene	ug/l	< 0.01	< 0.01	< 0.01	< 0.01	< 0.01		< 0.01		
Dibenz(a,h)anthracene	ug/l	< 0.01	< 0.01	< 0.01	< 0.01	< 0.01		< 0.01		
Benzo(ghi)perylene	ug/l	< 0.008	< 0.008	< 0.008	< 0.008	< 0.008		< 0.008		
Total EPA-16 PAHs	ug/l	0.66	0.01	< 0.01	< 0.01	0.14		0.30		
Aliphatic >C5 - C6	ug/l	< 10	< 10	< 10	< 10	< 10		< 10	15 mg/l	10 ug/l
Aliphatic >C6 - C8	ug/l	< 10	< 10	< 10	< 10	< 10		< 10	15 mg/l	10 ug/l
Aliphatic >C8 - C10	ug/l	< 10	< 10	< 10	< 10	< 10		< 10	300 ug/l	10 ug/l
Aliphatic >C10 - C12	ug/l	< 10	< 10	< 10	< 10	< 10		< 10	300 ug/l	10 ug/l
Aliphatic >C12 - C16	ug/l	< 10	< 10	< 10	< 10	< 10		< 10	300 ug/l	10 ug/l
Aliphatic >C16 - C21	ug/l	< 10	< 10	< 10	< 10	< 10		< 10	No WHO value.	10 ug/l
Aliphatic >C21 - C34	ug/l	< 10	< 10	< 10	< 10	< 10		< 10	No WHO value.	10 ug/l
Total Aliphatic (C5 - C34)	ug/l	< 70	< 70	< 70	< 70	< 70		< 70		
Aromatic >C5 - C7	ug/l	< 10	< 10	< 10	< 10	< 10		< 10	10 ug/l (for Benzene)	10 ug/l
Aromatic >C7 - C8	ug/l	< 10	< 10	< 10	< 10	< 10		< 10	700 ug/l (Toluene)	10 ug/l
Aromatic >C8 - C10	ug/l	< 10	< 10	< 10	< 10	< 10		< 10	300 ug/l Ethyl benzene 500 ug/l Xylenes	10 ug/l
Aromatic >C10 - C12	ug/l	12	< 10	< 10	< 10	< 10		< 10	100 ug/l	10 ug/l
Aromatic >C12 - C16	ug/l	< 10	< 10	< 10	< 10	< 10		< 10	100 ug/l	10 ug/l
Aromatic >C16 - C21	ug/l	< 10	< 10	< 10	< 10	< 10		< 10	90 ug/l	10 ug/l
Aromatic >C21 - C35	ug/l	< 70	< 70	< 70	< 70	< 70		< 10	90 ug/l	10 ug/l
Total Aromatic (C5 - C35)	ug/l	< 140	< 140	< 140	< 140	< 140		< 70		
Total Aromatic and Aliphatic >C5 - C35	ug/l	< 140	< 140	< 140	< 140	< 140		< 140		
Benzene	ug/l	< 1	< 1	< 1	< 1	< 1		< 1	1 ug/l	8 ug/l
Toluene	ug/l	< 5	< 5	< 5	< 5	< 5		< 5	700 ug/l	40 ug/l
Ethylbenzene	ug/l	< 5	< 5	< 5	< 5	< 5		< 5	300 ug/l	
p & m-xylene	ug/l	< 10	< 10	< 10	< 10	< 10		< 10	500 ug/l (Total Xylenes)	30 ug/l (Total Xylenes)
o-xylene	ug/l	< 5	< 5	< 5	< 5	< 5		< 5	500 ug/l (Total Xylenes)	30 ug/l (Total Xylenes)
MTBE	ug/l	< 10	< 10	< 10	< 10	< 10		< 10	15 ug/l (odour threshold)	
Dichlorodifluoromethane	< 5	< 5	< 5					< 5		
Vinyl Chloride	< 5	< 5	< 5					< 5		
Chloromethane	< 5	< 5	< 5					< 5		
Chloroethane	< 5	< 5	< 5					< 5		
Bromomethane	< 5	< 5	< 5					< 5		
Trichlorofluoromethane	< 5	< 5	< 5					< 5		
1,1-Dichloroethene	< 5	< 5	< 5					< 5		
MTBE	< 10	< 10	< 10					< 10		
trans-1,2-Dichloroethene	< 5	< 5	< 5					< 5		
1,1-Dichloroethane	< 5	< 5	< 5					< 5		
cis-1,2-Dichloroethene	< 5	< 5	< 5					< 5		
2,2-Dichloropropane	< 5	< 5	< 5					< 5		
Chloroform	< 5	< 5	< 5					< 5		
Bromochloromethane	< 10	< 10	< 10					< 10		
1,1,1-Trichloroethane	< 5	< 5	< 5					< 5		
1,1-Dichloropropene	< 5	< 5	< 5					< 5		
Carbon Tetrachloride	< 5	< 5	< 5					< 5		
1,2-Dichloroethane	< 10	< 10	< 10					< 10		
Benzene	< 1	< 1	< 1					< 1		
1,2-Dichloropropane	< 5	< 5	< 5					< 5		
Trichloroethene	< 5	< 5	< 5					< 5		
Bromodichloromethane	< 5	< 5	< 5					< 5		
Dibromomethane	< 5	< 5	< 5					< 5		
TAME	< 5	< 5	< 5					< 5		
cis-1,3-Dichloropropene	< 5	< 5	< 5					< 5		
Toluene	< 5	< 5	< 5					< 5		
trans-1,3-Dichloropropene	< 5	< 5	< 5					< 5		
1,1,2-Trichloroethane	< 10	< 10	< 10					< 10		
1,3-Dichloropropane	< 5	< 5	< 5					< 5		
Tetrachloroethene	< 5	< 5	< 5					< 5		
Dibromochloromethane	< 5	< 5	< 5					< 5		
1,2-Dibromoethane	< 5	< 5	< 5					< 5		
Chlorobenzene	< 5	< 5	< 5					< 5		
1,1,1,2-Tetrachloroethane	< 5	< 5	< 5					< 5		
Ethyl Benzene	< 5	< 5	< 5					< 5		
m,p-Xylene	< 10	< 10	< 10					< 10		
o-Xylene	< 5	< 5	< 5					< 5		
Styrene	< 5	< 5	< 5					< 5		
Bromoform	< 10	< 10	< 10					< 10		
Isopropylbenzene	< 5	< 5	< 5					< 5		
1,1,2,2-Tetrachloroethane	< 10	< 10	< 10					< 10		
1,2,3-Trichloropropane	< 5	< 5	< 5					< 5		
n-Propylbenzene	< 5	< 5	< 5					< 5		
Bromobenzene	< 5	< 5	< 5					< 5		
2-Chlorotoluene	< 5	< 5	< 5					< 5		
1,3,5-Trimethylbenzene	< 5	< 5	< 5					< 5		
4-Chlorotoluene	< 5	< 5	< 5					< 5		
tert-Butylbenzene	< 5	< 5	< 5					< 5		
1,2,4-Trimethylbenzene	< 5	< 5	< 5					< 5		
sec-Butylbenzene	< 5	< 5	< 5					< 5		
p-Isopropyltoluene	< 5	< 5	< 5					< 5		
1,3-Dichlorobenzene	< 5	< 5	< 5					< 5		
1,4-Dichlorobenzene	< 5	< 5	< 5					< 5		
n-Butylbenzene	< 5	< 5	< 5					< 5		
1,2-Dichlorobenzene	< 5	< 5	< 5					< 5		
1,2-Dibromo-3-chloropropane	< 10	< 10	< 10					< 10		
Hexachlorobutadiene	< 5	< 5	< 5					< 5		

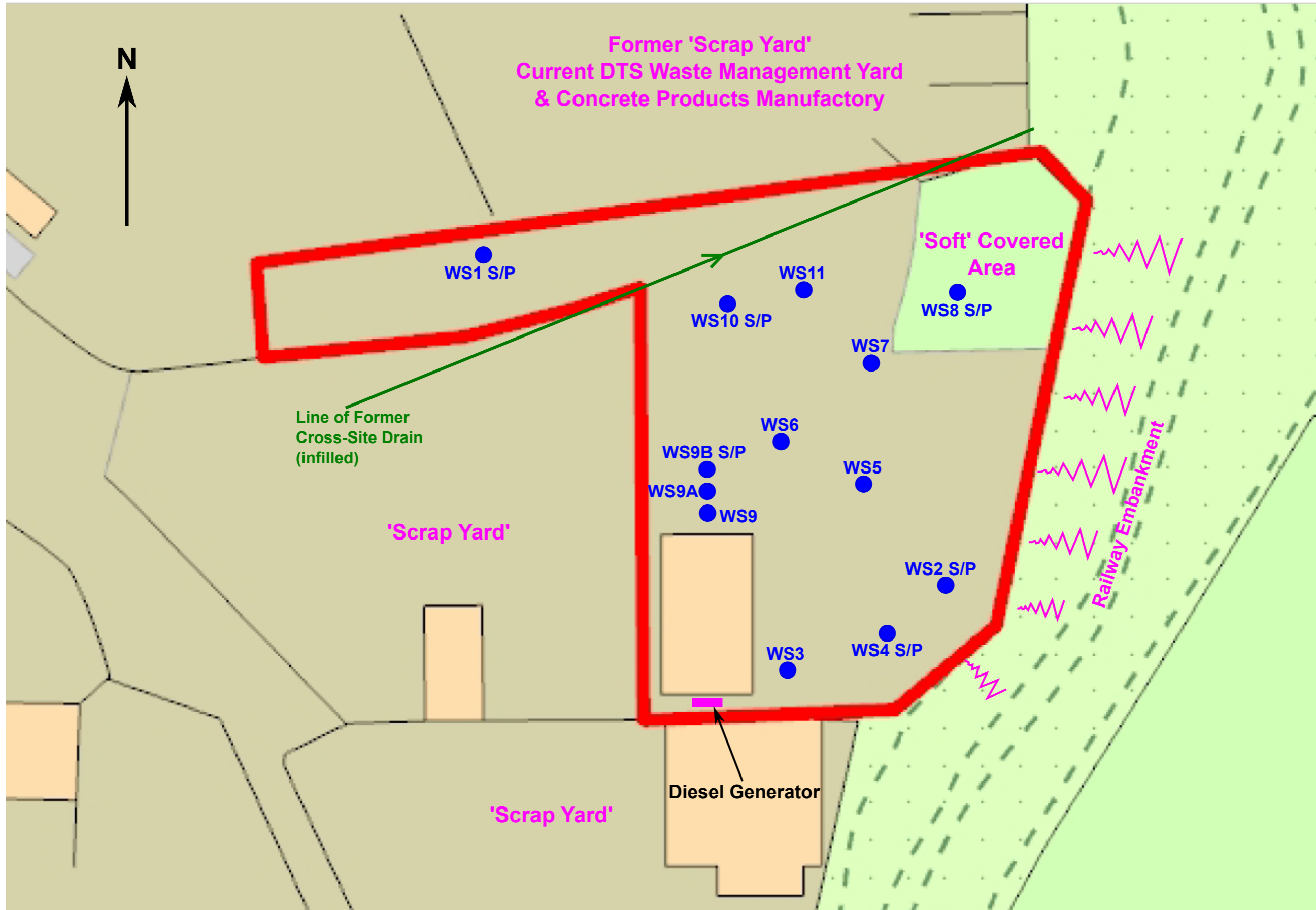
DRAWINGS



Site Location Plan



Scale: 1:2500 | Area 4Ha | Grid Reference: 437780,410124 | Paper Size: A4



- KEY**
- Windowless Sampler Borehole
 - Monitoring Standpipe Installed

29 Greenlands Business Centre
 Studley Road
 Redditch, B98 7HD
 Tel: 0121 314 5432
 Email: mail@csge.co.uk

CSG
 Consulting Engineers

CLIENT
STAIRFOOT METALS LIMITED

PROJECT
SHAW LANE, BARNSELY

TITLE
BOREHOLE LOCATION PLAN AND KEY FEATURES

DATE	SEPT 2017	DRAWN	DH
SCALE	A3	CHECKED	PP
DRAWING NUMBER	759-D-01	APPROVED	PP
		REVISION	

0m **Scale** 20m