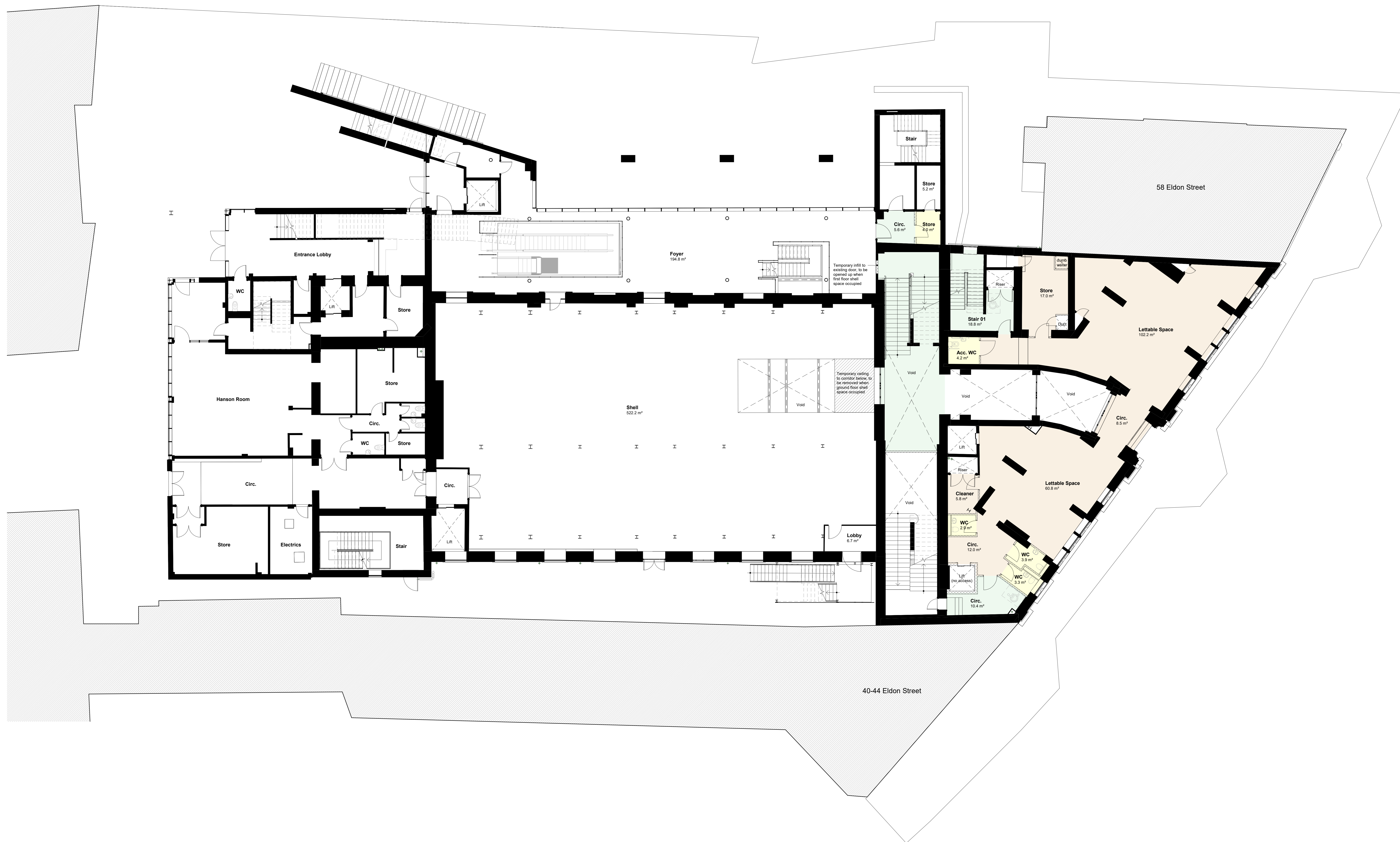


Notes  
 Check all dimensions on site. Do not scale from this drawing.  
 Report any discrepancies and omissions to HLM Architects  
 This drawing is Copyright ©

Accommodation

- Lettable Space
- Creation Space
- Office Space
- Flexible Space
- Ancillary
- Circulation

Basic finishes for future fit-out are proposed for a F&B facility which could be linked and served from the ground floor unit to the North and appropriate MEP services will be provided to support a service area connection. Alternative use could also be a lettable office or Shop unit. Toilets serving this area will be provided within the space to the south adjacent the new lift serving the upper floors. The potential user will expect a late licence to operate until 2am. The space would also be available as a lettable shop unit linked to the ground floor unit or separate. The existing staircase from ground to second floor is to be brought back into use.



Rev	Description	Date	By	Chk
P01	ISSUED FOR PLANNING	06/05/2022	MBD	AJT
Revisions				
				Suitability
Project				S2 INFORMATION

**11-1177-01**  
**BARNSELY CIVIC**

Client  
**BARNSELY CIVIC**  
**ENTERPRISE**

Title  
**First Floor Proposed**  
**Plan**

Drawing No.	Revision
BCE-HLM-01-01-DR-A-00001	P01

Scale	Drawn
1: 100 @A0	MBD
Date	Checked
20/04/2022	AJT

