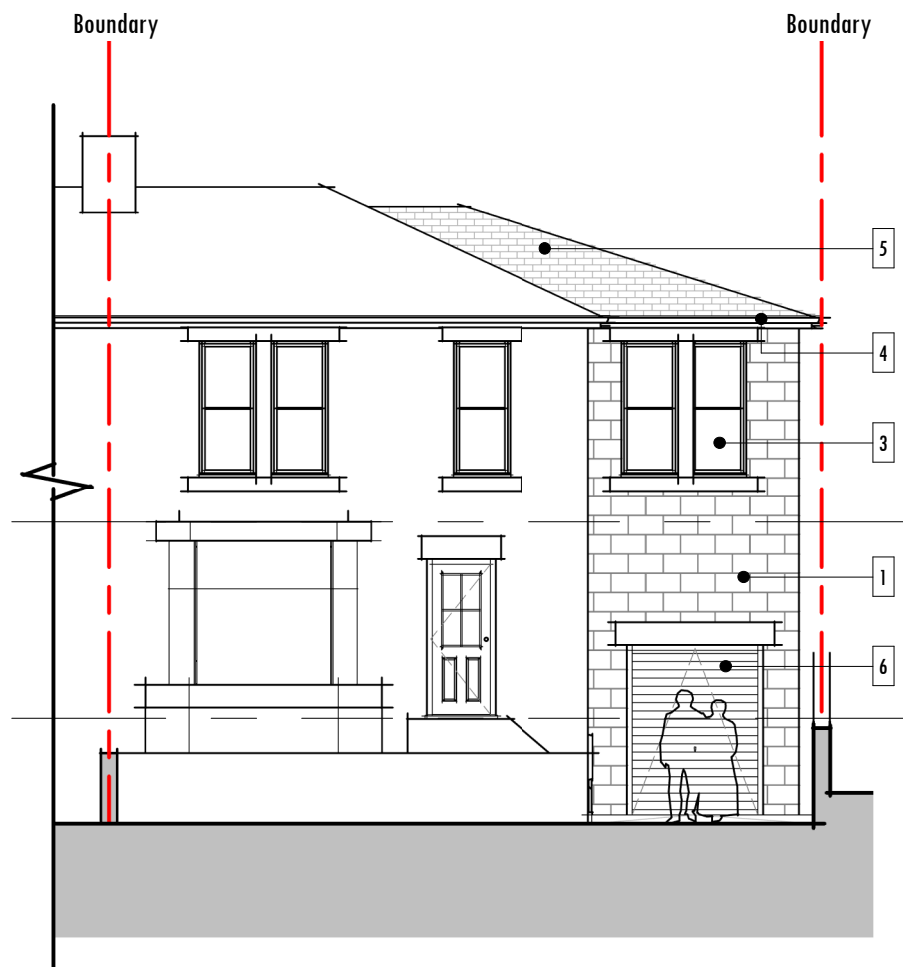
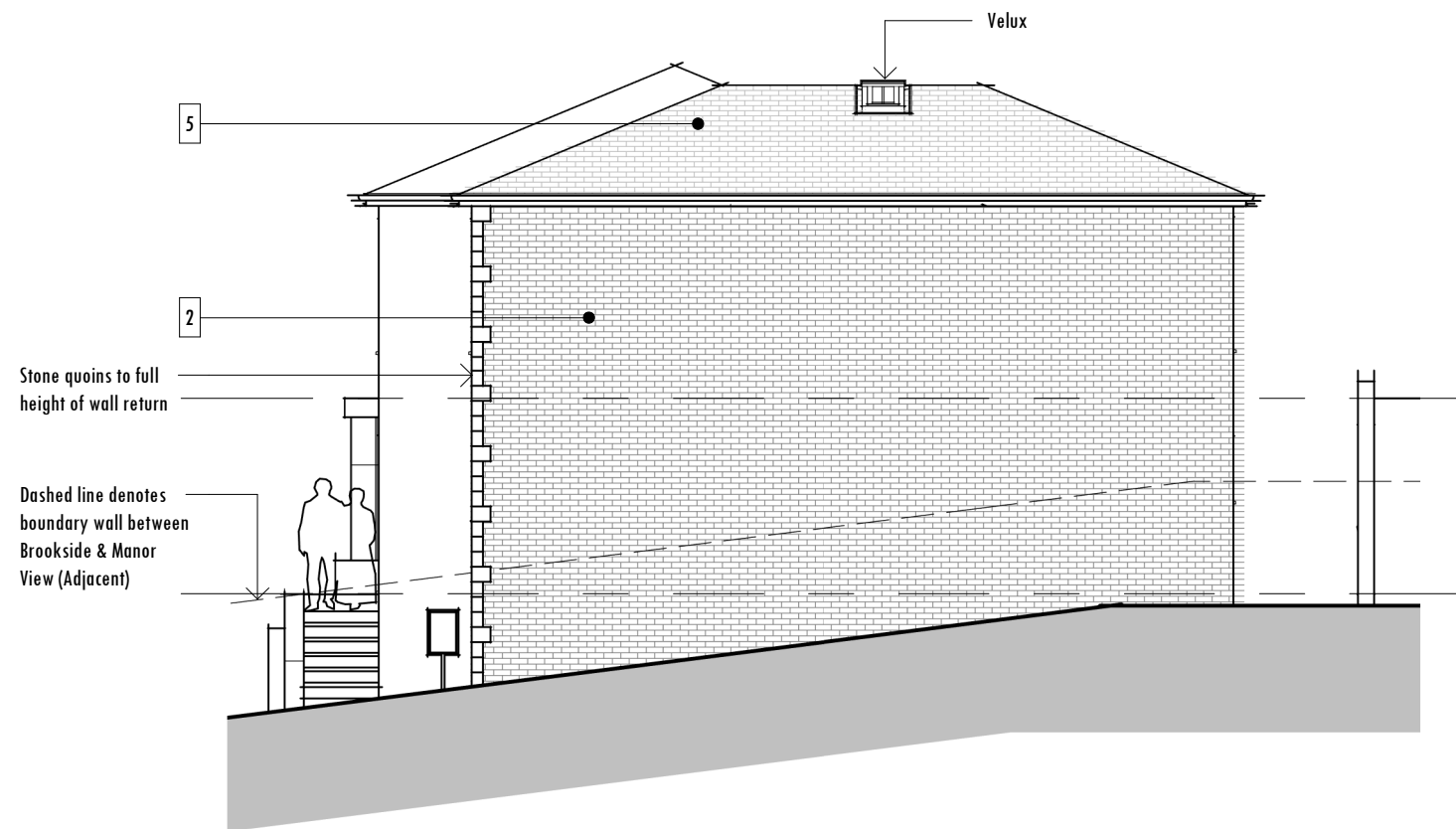


Rev	Description	Date
A	Amended in-line with comments from BMBC.	12/02/20



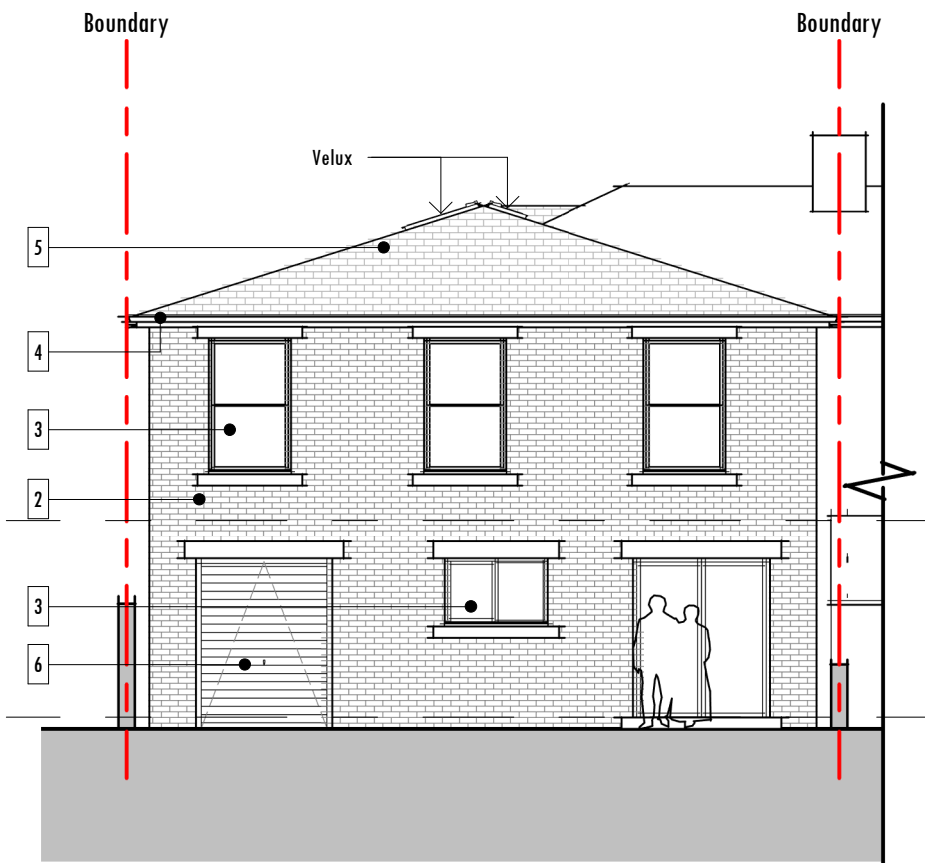
**Front Elevation**

1 : 100



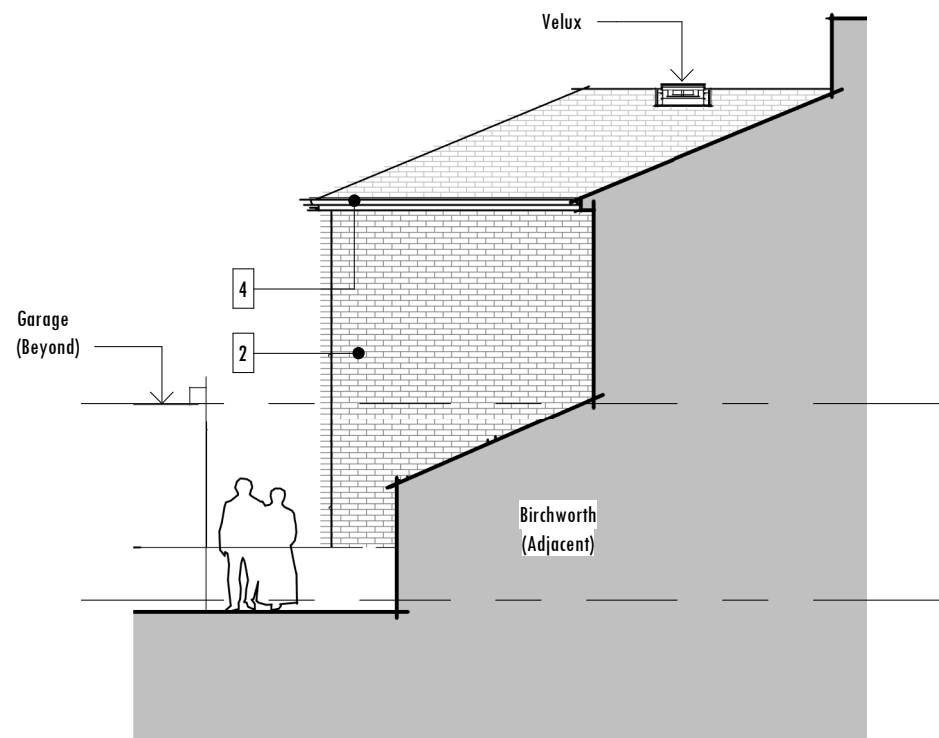
**Side Elevation**

1 : 100



**Rear Elevation**

1 : 100



**Side Elevation**

1 : 100

**Materials Key**

Ref	Material
1	Masonry (Stone) Colour: Buff
2	Masonry (Brick) Colour: Red
3	uPVC Double Glazed Doors & Windows Colour: White
4	uPVC Guttering, Fascia & Fall Pipes Colour: Black
5	Slate Tiles Colour: Grey
6	Roller Shutter Door Colour: Black

Note: All new windows to front to have stone cills, mullions & lintels

Note: All new windows to rear to have stone cills & lintels

